

ASHWAUBENON CREEK & DUTCHMAN CREEK WATERSHEDS

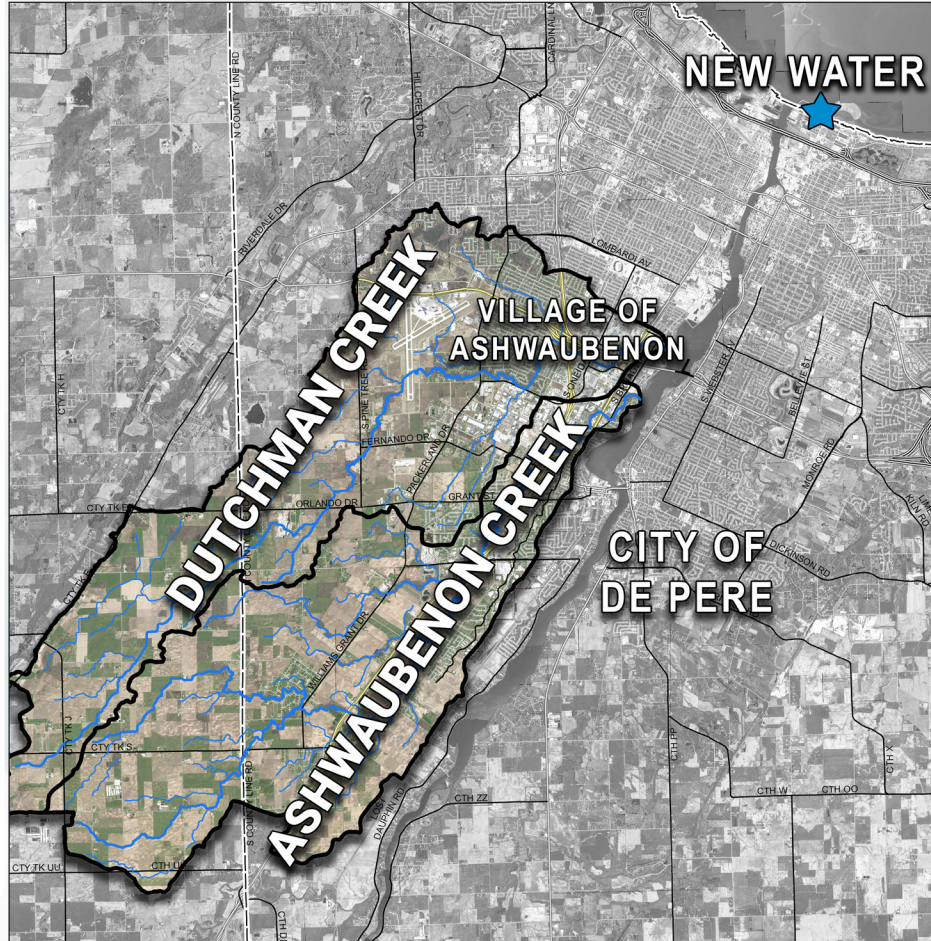


NEW Water, the brand of the Green Bay Metropolitan Sewerage District, is working in the watershed to cost effectively achieve permit compliance.

The organization's NEW Watershed Program Team is actively implementing conservation practices in the Ashwaubenon Creek & Dutchman Creek (ACDC) watersheds, which encompasses nearly 40,000 acres. This Program focuses on improving water quality through partnerships and collaboration.

There are many opportunities to partner with the Program to implement best management practices (BMPs) that will enhance your agricultural activities while helping improve regional water quality.

This brochure outlines the types of funds payable to cost-share recipients under the Pay-for-Performance system, upon implementing and maintaining of the BMPs as outlined in the cost-share agreement.



#LOVEYOURWATERSHED

WWW.NEWWATER.US



CONTACT INFORMATION:
NIKKI RAIMER
 Watershed Field Coordinator

(920) 915-6106
 nikki.raimer@jacobs.com

NEW Water
 2231 N. Quincy Street
 Green Bay, WI 54302



ACDC Accomplishments

Program Installed
 Operational
 Practices
20,609 acres

Program Installed
 Structural Practices
177

Acres of
 Cover Crops
 in 2025
2,153 acres

Acres of
 Residue/Tillage
 in 2025
1,438 acres

16 Clean Water Pledges Signed



Take the pledge today:
<https://bit.ly/CleanH2OPledge>



**PAY FOR PERFORMANCE
 COST-SHARE FUNDING
 2026**

COVER CROP \$10 - \$65/ACRE

Corn Silage or Alfalfa: \$10/acre for planting; an additional \$25/acre for planting winter wheat, winter barley, rye, triticale, or clover.

- 10% cover established: increased planting payment to \$30/acre
- 20% cover establishment: increased planting payment to \$40/acre

Soybeans or HM Corn: \$10/acre for planting; an additional \$25/acre for planting winter wheat, winter barley, rye, triticale, or clover.

- 10% cover establishment: increased planting payment to \$40/acre

Corn Grain: \$10/acre for planting; an additional \$25/acre for planting winter wheat, winter barley, rye, triticale, or clover.

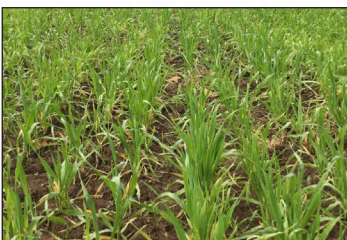
Winter Wheat or No Crop: \$10/acre for planting; an additional \$25/acre for planting rye, triticale, clover, winter barley or winter wheat.

- 60% cover establishment: increased planting payment to \$40/acre

Surface manure application on early emerged cover crops may disqualify fall cover crop payment.



Winter Rye after Corn Silage / 30% cover \$65/acre



Winter Wheat after Soybean / 60% cover \$65/acre



Winter Rye after Corn Grain / 10% cover \$65/acre

To qualify as a cover crop, cover crop can't be used for cash crop. Watershed coordinator must be notified within two weeks of implementation.

INTERSEEDING \$50 - \$75/ACRE

\$50/acre for planting (using available equipment) \$75/acre for winter wheat, winter barley, rye, triticale, or clover



Drone or Aerial seeding Winter Wheat after Soybeans: \$75/acre



Broadcast Orchardgrass after planting Corn Grain: \$75/acre



Cover Crop after Interseeding Corn Silage: \$75/acre

Watershed Field Coordinator must approve seed mix and planting time prior to seeding. Watershed Field Coordinator must be notified within two weeks of implementation.

Surface manure application on early emerged cover crops may disqualify fall cover crop payment.

Contact Andy Kiefer (920) 574-7539 or Alex Kreplin (920) 570-1462 at Outagamie County Land Conservation Department for available equipment.

ALFALFA WITH GRASS \$40/ACRE OR ADDED LATER \$20/ACRE

Benefits of Alfalfa with Grass:

Planted when established \$40/acre or added later \$20/acre

- More persistent crop through the winter
- Creates weed and erosion control



Watershed Field Coordinator must be notified within two weeks of implementation and must verify after establishment.

LOW-DISTURBANCE MANURE INJECTION \$30 - \$50/ACRE

The goal of Low-Disturbance Manure Injection (LDMI) is to minimize the physical disturbance of the soil.



Low-Disturbance Manure Injection (LDMI) Incentive

Spring/Pre-Planting	Summer/Actively Growing Crop	Fall/Post Harvest Living Cover*	Fall/Post Harvest Bare Ground
\$40/acre	\$50/acre	\$40/acre	\$30/acre

No surface application • No tillage pre and post LDMI

Watershed Field Coordinator must verify after manure application and must be notified within one week of implementation.

*To qualify for living cover, the field needs to be equal to or greater than 80% vegetation cover at the time of LDMI.

For more information on LDMI and available equipment, please contact Outagamie County Land Conservation Department Andy Kiefer (920) 574-7539 or Alex Kreplin (920) 570-1462.

RESIDUE / TILLAGE MANAGEMENT \$10 - \$30/ACRE

Following Corn Grain Harvest:

- 30% - 50% residue or no-till: \$10/acre
- 51% - 70% residue and no-till: \$16/acre
- >70% residue and no-till: \$20/acre
- Planting-Green: \$30/acre



Spring Termination Alfalfa -

- 25% - 35% residue or no-till: add \$10/acre
- 36% - 50% residue and no-till: add \$16/acre
- >50% residue and no-till: add \$20/acre
- Planting-Green: add \$30/acre



Following Other Crops Harvested:

- 25% - 35% residue or no-till: \$10/acre
- 36% - 50% residue and no-till: \$16/acre
- >50% residue and no-till: \$20/acre
- Planting-Green: \$30/acre



Watershed Field Coordinator will measure residue and verify in spring after planting. Watershed Field Coordinator must be notified within two weeks of implementation.