



East River Lift Station Renewal Improvements and Force Main

May 28, 2025



Agenda

1. Introductions
2. NEW Water Overview
3. Project Overview
4. Closing



Introductions

- NEW Water
 - Nathan Qualls, Executive Director
 - Lisa Sarau, Director of Technical Services
 - Max McGuire, Staff Engineer
- Donohue
 - Brittany Hess, Project Manager
 - Joe Holzwart, Civil Lead



Who is NEW Water?

NEW Water, is the brand of the Green Bay Metropolitan Sewerage District

Public utility providing wastewater conveyance and treatment services for 15 municipalities in Northeast Wisconsin

City of Green Bay

City of De Pere

Village of Allouez

Village of Ashwaubenon

Village of Bellevue

Village of Hobart

Village of Howard

Village of Luxemburg

Village of Pulaski

Village of Suamico

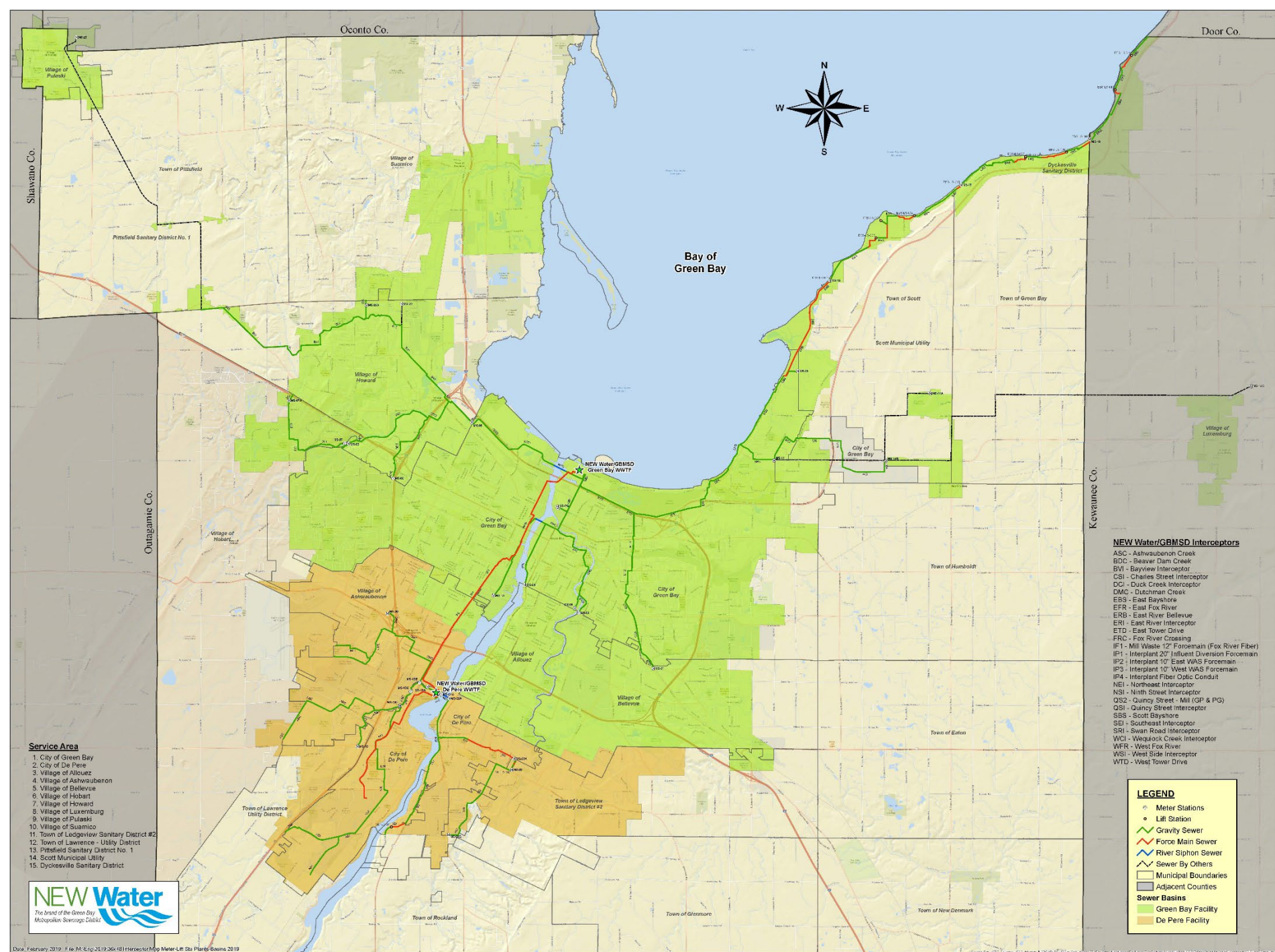
Town of Ledgeview Sanitary District #2

Town of Lawrence – Utility District

Pittsfield Sanitary District No. 1

Scott Municipal Utility

Dyckesville Sanitary District






Proudly serving since 1931

Contract—Tunnel Sewers
United Construction Co., Contractors
Green Bay Metropolitan Sewerage District
Jerry Donohue Engineering Co. and
Alsord, Burdick & Howson, Engineers

8-16-34

Serving the Families, Businesses, Industries, and Visitors to Northeast Wisconsin



NEW Water staff work around the clock so that your residents can do laundry, flush the toilet, and run their businesses whenever they want.

In 2024, NEW Water cleaned approximately **15 billion gallons of water** for Northeast Wisconsin



2
treatment
facilities

78
miles of
interceptors



600
pumps

1,206
manhole
structures

285
square-mile
service area

A satellite photograph of the Great Lakes region in North America. The five Great Lakes (Superior, Michigan, Huron, Erie, and Ontario) are visible as large, dark blue bodies of water. The surrounding land is a mix of green, indicating forested areas, and brown/tan, indicating agricultural or developed land. White clouds are scattered across the scene, particularly over the lakes and the surrounding land. The text "Protecting our most valuable resource, water" is overlaid in the bottom left corner.

*Protecting our most
valuable resource, water*



East River Lift Station Renewal Improvements and Force Main: Project Overview



Project Background



Project Background

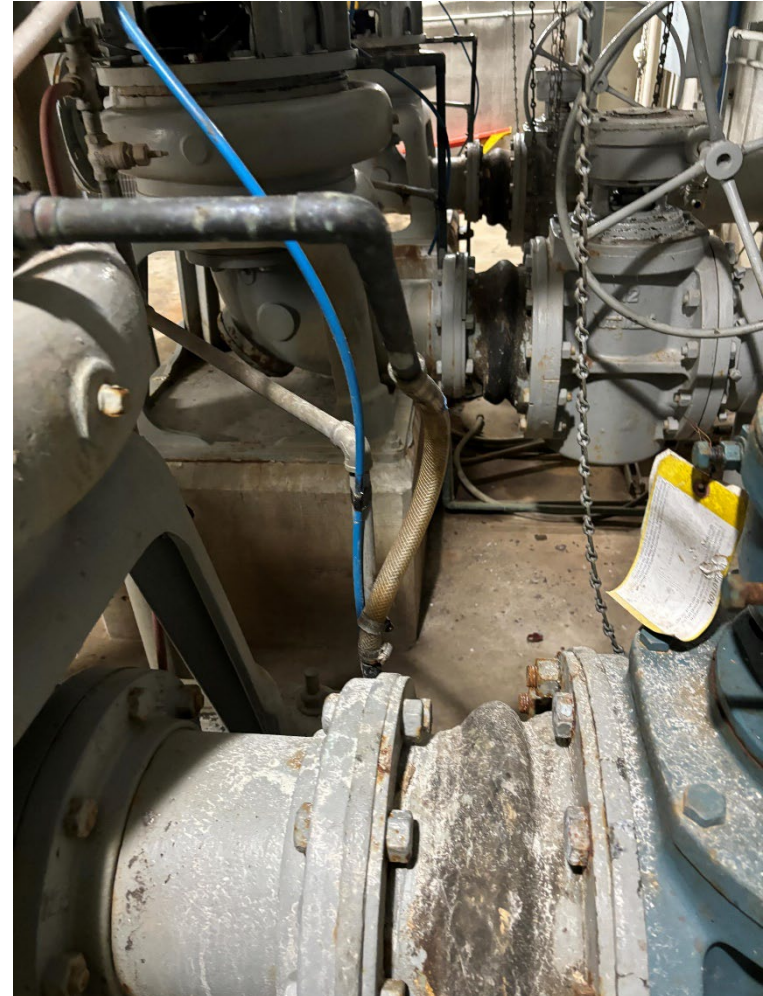
- East River Lift Station (ERLS) serves portions of City of De Pere, Town of Ledgeview, and Village of Bellevue
- Originally constructed in 1998
 - Three pumps
 - One force main
- Second force main put into service in 2005
- NEW Water owns and maintains the lift station and force mains



Project Need and Cost

Project Need and Cost

- Age/Condition
 - Typical useful life of assets is 20 years
 - Additional capacity needed to accommodate future growth
 - Reliability
-
- Cost is approximately \$11 million, funded through NEW Water municipal customers





Project Scope



Project Scope

- Lift station
 - Replace three existing pumps and add additional fourth pump
 - Enhance station reliability
 - Backup emergency power
 - Building and exterior improvements
 - Electrical and mechanical improvements
 - Flood protection measures
- Force Main
 - Add additional force main to meet pump station hydraulic/flow capacity with additional pump

Project Scope



Project Scope





Project Location

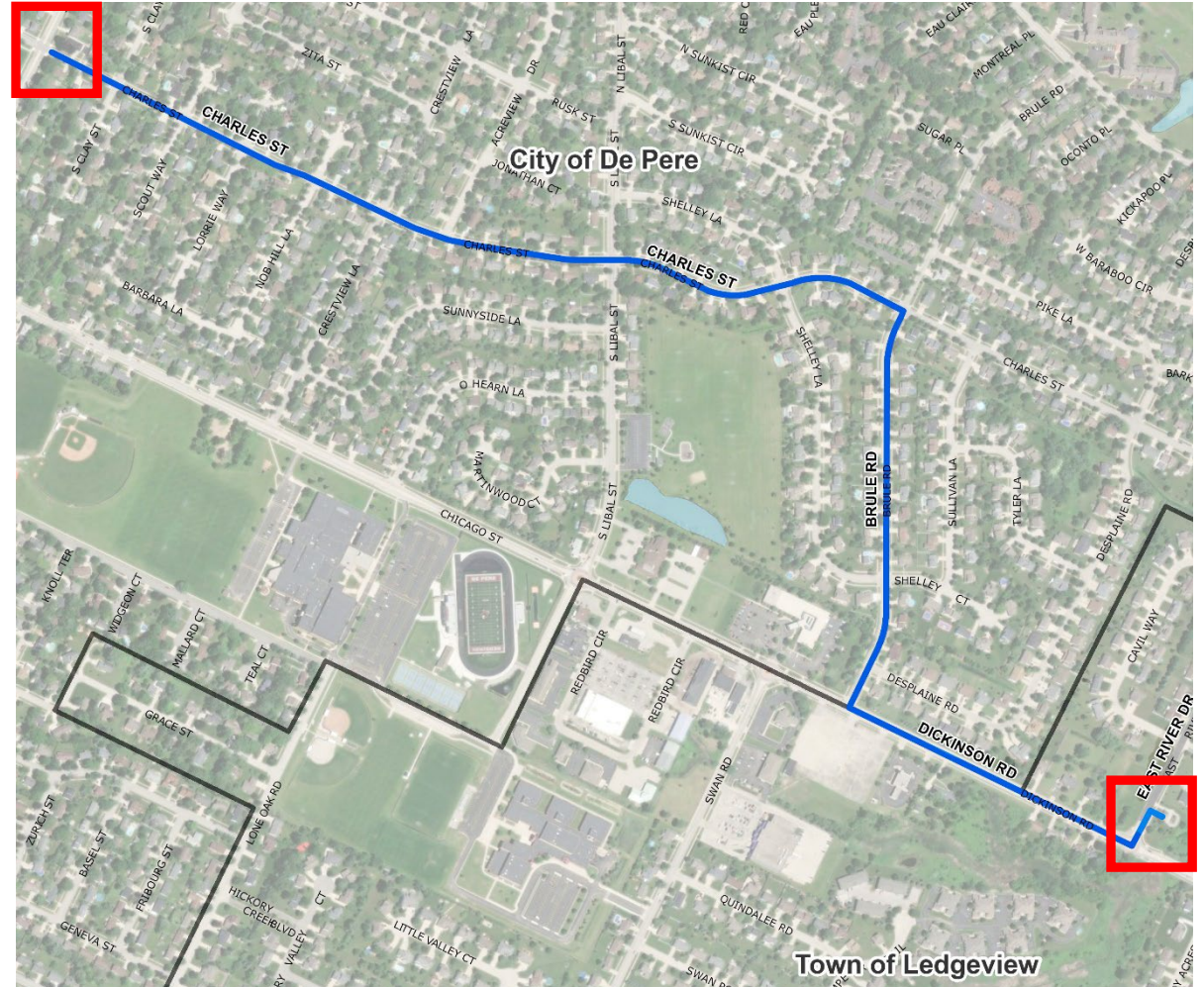
Project Location



Image: Google Maps

Project Location

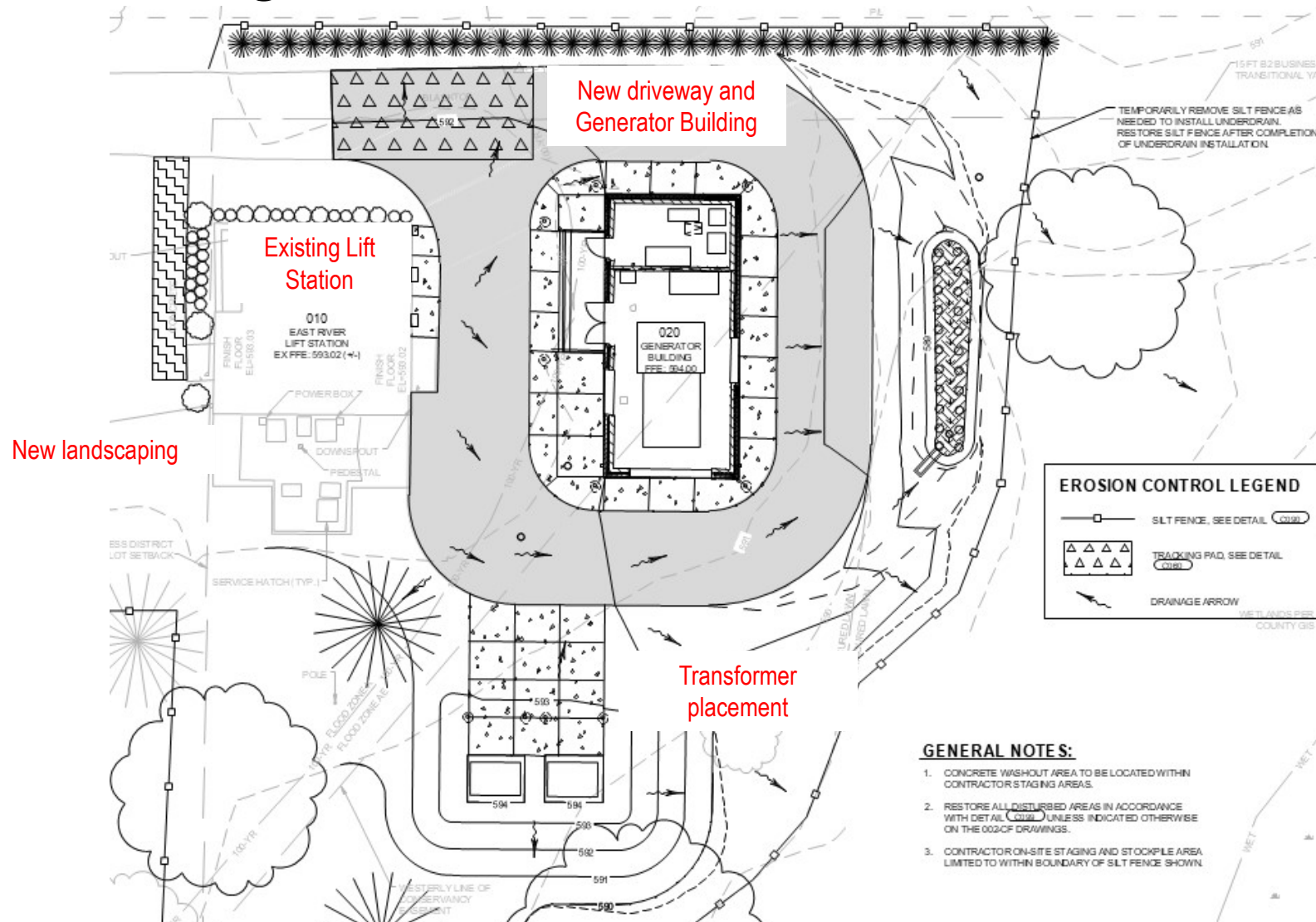
- Force Main
 - Begins at ERLS Site
 - Connects to NEW Water conveyance assets at Webster Ave





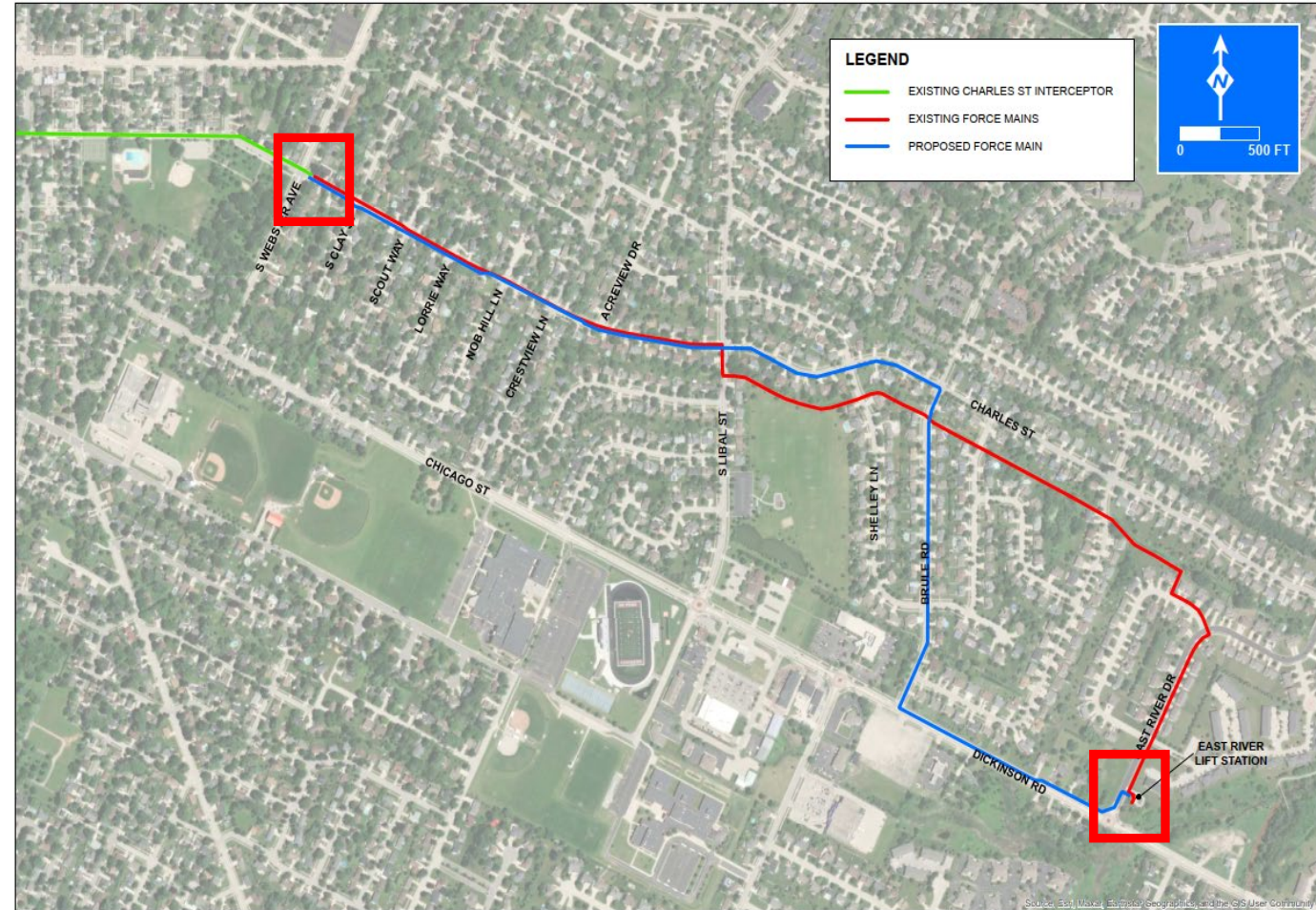
Project Design

ERLS Design



Force Main Design

- Force Main – 16" Diameter
 - Begins at ERLS Site
 - Alignment primarily in public right-of-way
 - Coordinated with municipalities on proposed location to avoid future and existing utilities
 - Connects Charles Street Interceptor in Webster Ave

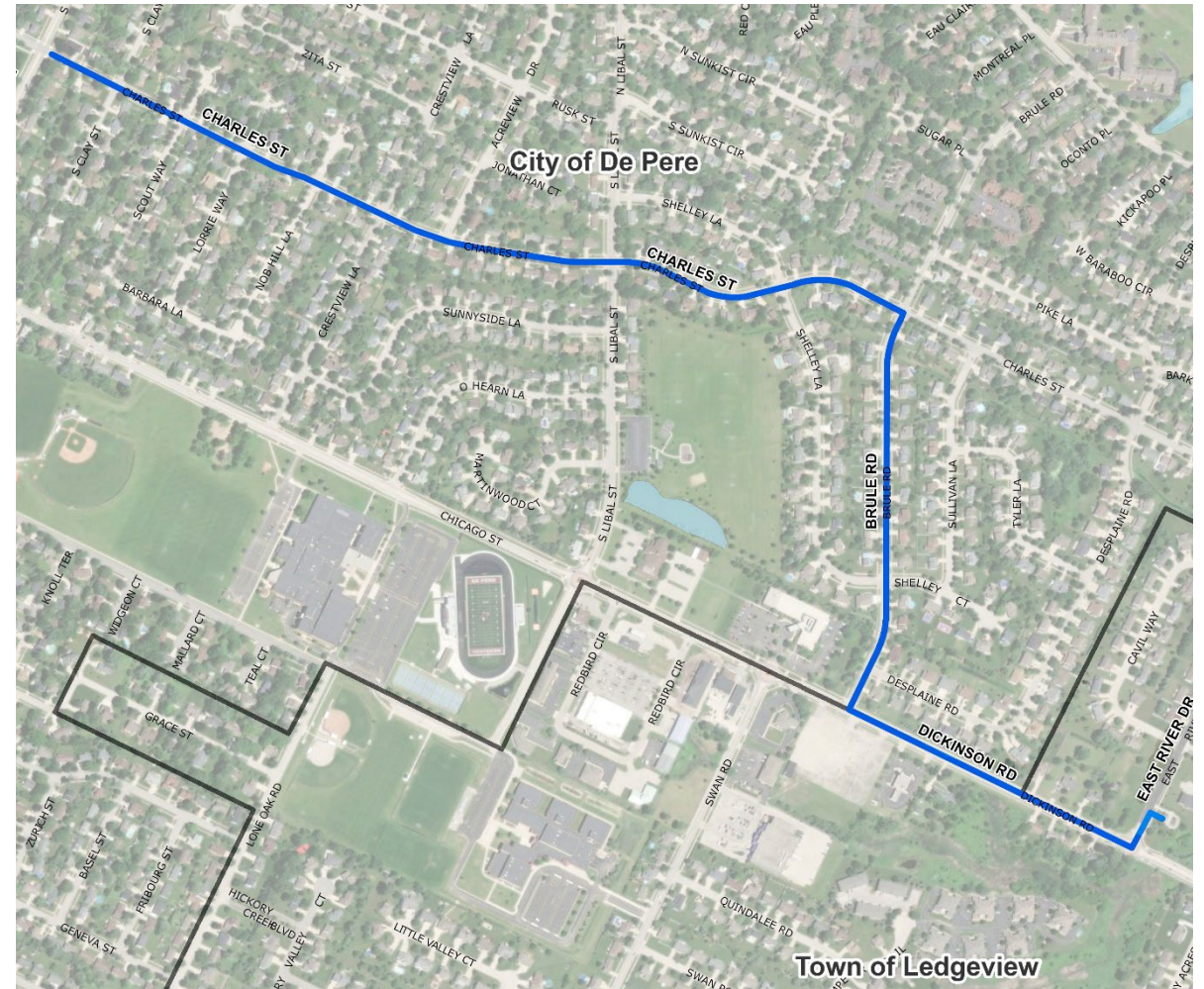




Project Impacts & Schedule

Project Impacts & Schedule

- Force Main Route Impacts
 - Constructed mainly in street or public right-of-way (green space)
 - Traffic impacts
 - Temporary driveway access restrictions
 - Grass and pavement repairs competed with project
- Estimated Schedule
 - Begin construction in 2026
 - Finish in 2027



Project Impacts & Schedule

- ERLS Impacts
 - NEW Water owned site
 - Temporary disturbance to East River Drive
- Estimated Schedule:
 - Begin construction in 2026
 - Finish in 2028





Thank you!

Questions?

Stay tuned to NEW Water news

Sign up for our E-newsletter, follow us on social media, get in touch

<https://www.newwater.us/erls>

