



# Downtown Interceptors Renewal Project

May 6, 2025

**Brown AND Caldwell** :

**NEW Water**  
The brand of the Green Bay  
Metropolitan Sewerage District



# Agenda

1. Introductions
2. Project Overview
3. Project Location
4. Project Planning & Design
5. Project Impacts
6. Project Schedule





# Introductions

- NEW Water
  - Lisa Sarau, Director of Technical Services
  - Max McGuire, Staff Engineer
- Brown and Caldwell
  - Adam Shelton, Project Manager & Design Manager
- Contractors:
  - Michels Trenchless
  - Engineering & Construction Innovations



# *Who is NEW Water?*

*NEW Water, is the brand of the Green Bay Metropolitan Sewerage District*

*Public utility providing wastewater conveyance and treatment services for 15 municipalities in Northeast Wisconsin*

*City of Green Bay*

*City of De Pere*

*Village of Allouez*

*Village of Ashwaubenon*

*Village of Bellevue*

*Village of Hobart*

*Village of Howard*

*Village of Luxemburg*

*Village of Pulaski*

*Village of Suamico*

*Town of Ledgeview Sanitary District #2*

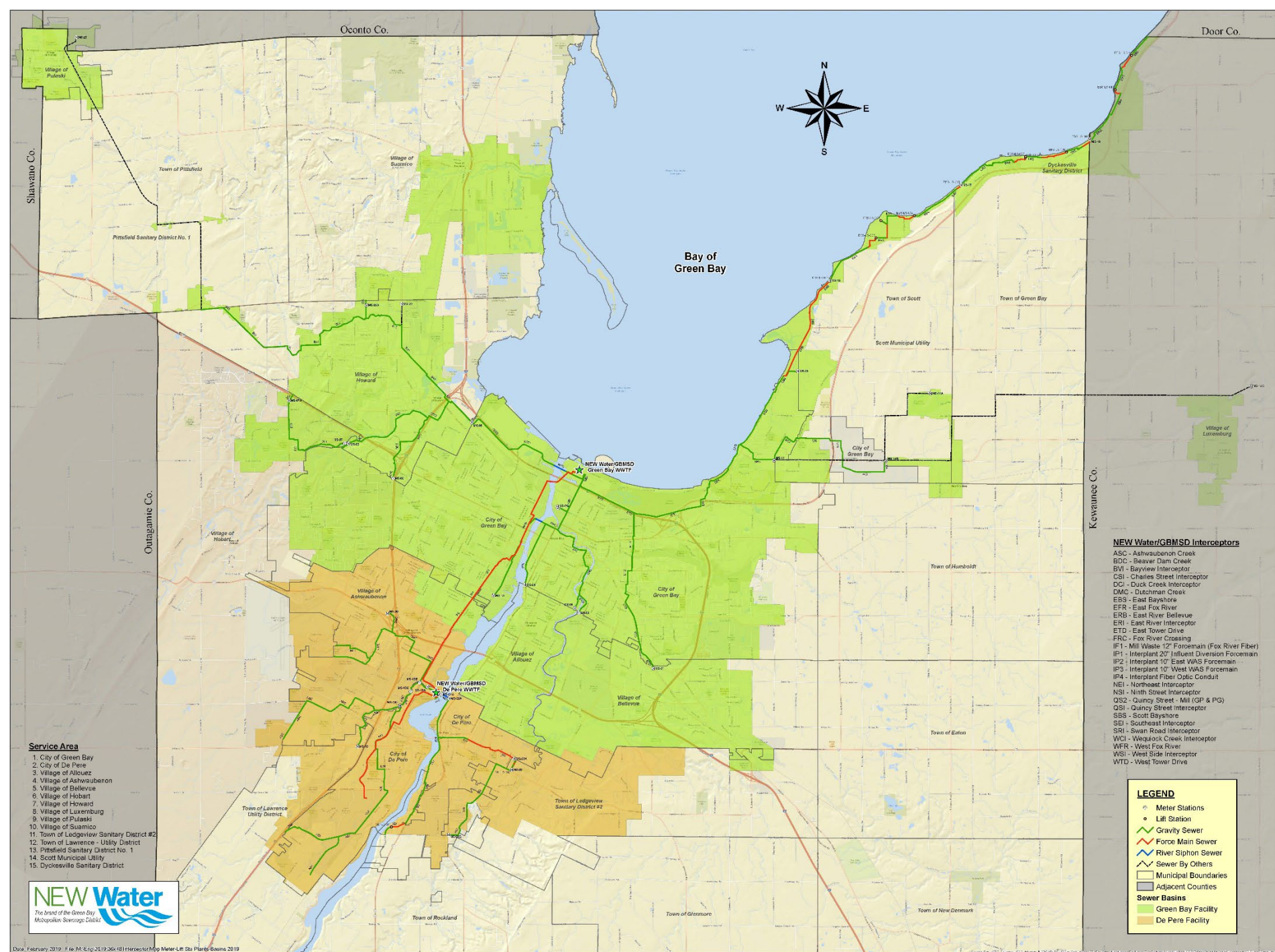
*Town of Lawrence – Utility District*

*Pittsfield Sanitary District No. 1*

*Scott Municipal Utility*

*Dyckesville Sanitary District*










Proudly serving since 1931

Contract—Tunnel Sewers  
United Construction Co., Contractors  
Green Bay Metropolitan Sewerage District  
Jerry Donohue Engineering Co. and  
Alsord, Burdick & Howson, Engineers

8-16-34




# Serving the Families, Businesses, Industries, and Visitors to Northeast Wisconsin



*NEW Water staff work around the clock so that your residents can do laundry, flush the toilet, and run their businesses whenever they want.*





In 2024, NEW Water cleaned approximately **15 billion gallons of water** for Northeast Wisconsin

**2**  
*treatment facilities*

**78**  
*miles of interceptors*

**600**  
*pumps*

**1,206**  
*manhole structures*

**285**  
*square-mile service area*



A satellite photograph of the Great Lakes region in North America. The five Great Lakes (Superior, Michigan, Huron, Erie, and Ontario) are visible as large, dark blue bodies of water. The surrounding land is a mix of green, indicating forested areas, and brown/tan, indicating agricultural or developed land. White clouds are scattered across the scene, particularly over the lakes and the surrounding land. The text "Protecting our most valuable resource, water" is overlaid in the bottom left corner in a white, italicized font.

*Protecting our most  
valuable resource, water*



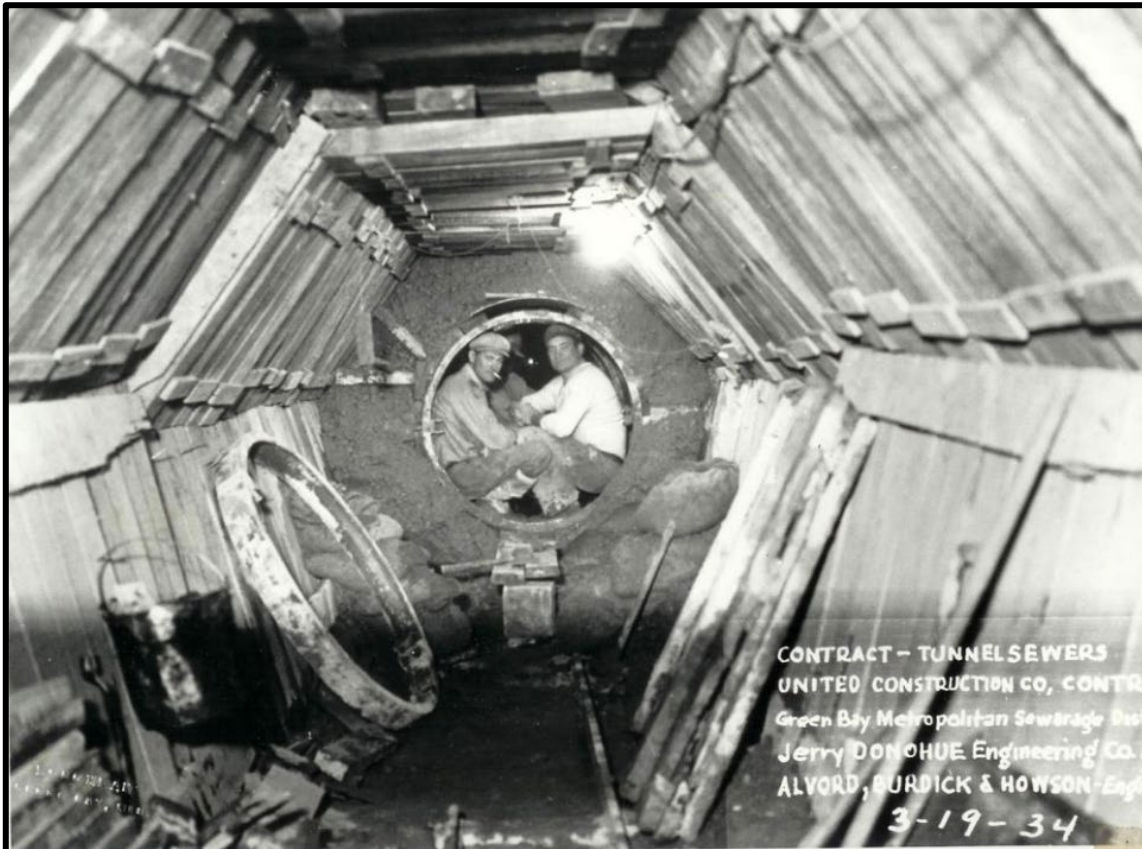


# Downtown Interceptor Renewal Project: Overview



# Project Need

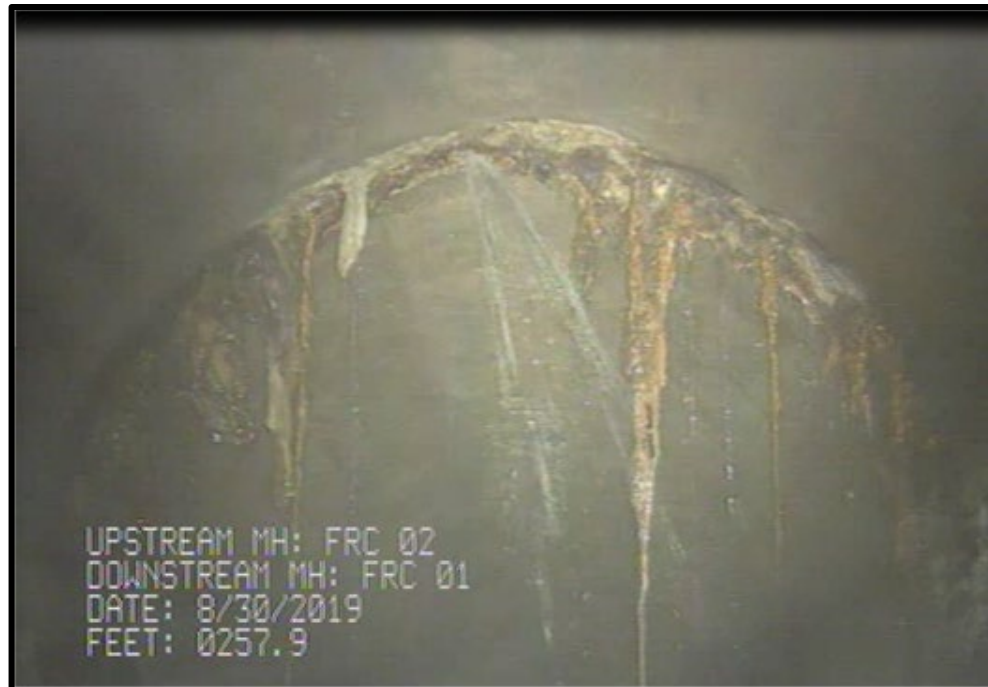
- Constructed in 1930s
  - Design life: ~75 years





# Project Need

- Condition
  - Inflow/Infiltration (I/I) reduction
  - Deterioration
  - Encrustations





# Project Need & Cost

- Critical Infrastructure
  - Sewers convey more than half of the total flow NEW Water receives at the Green Bay Treatment Facility
  - Construction Cost is \$30 million, funded through NEW Water wholesale rates to its 15 municipal customers
  - The improvements are needed to revitalize aging infrastructure to protect public health & the environment





# Downtown Interceptor Renewal Project: Location



# Project Location

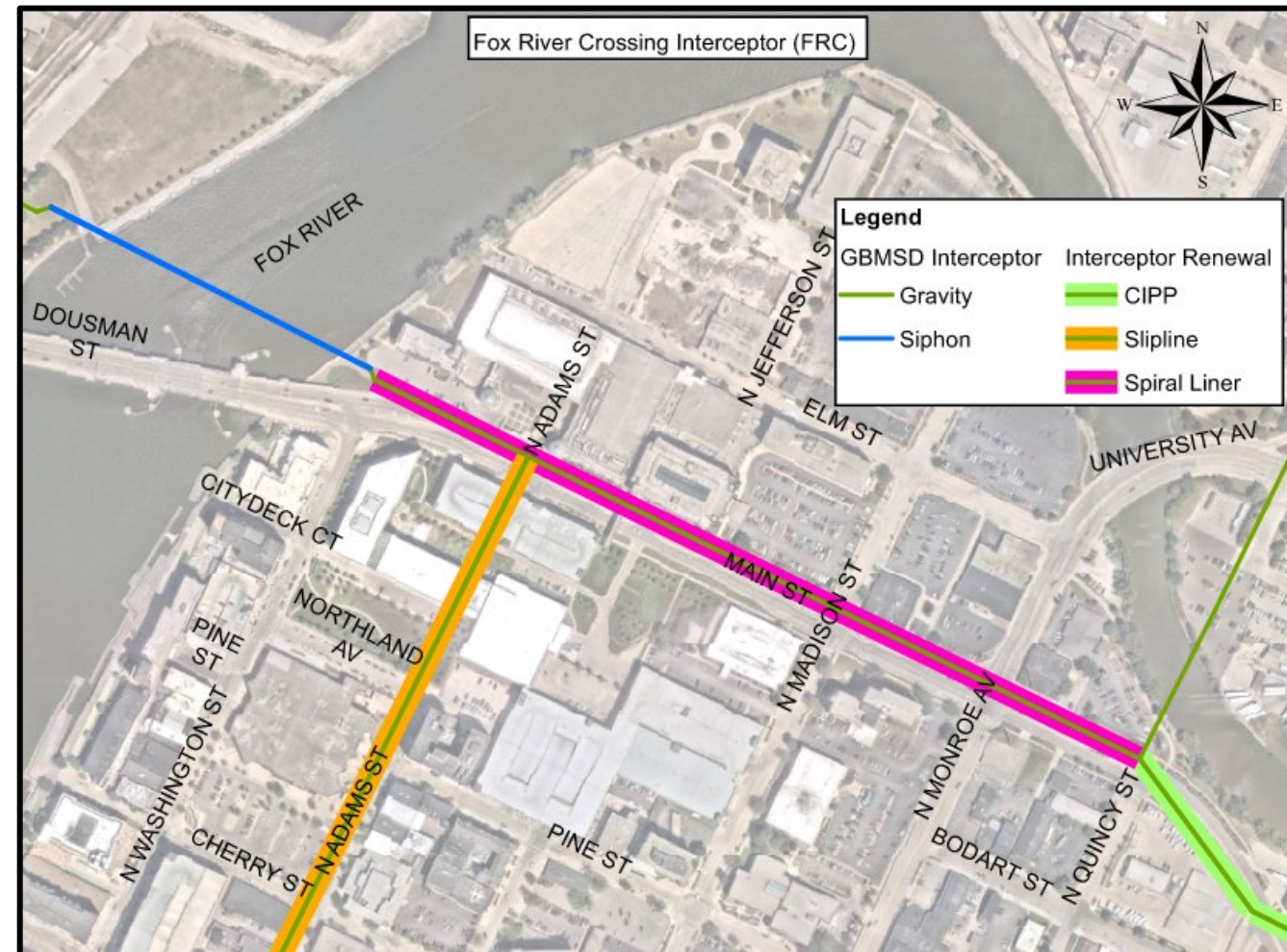
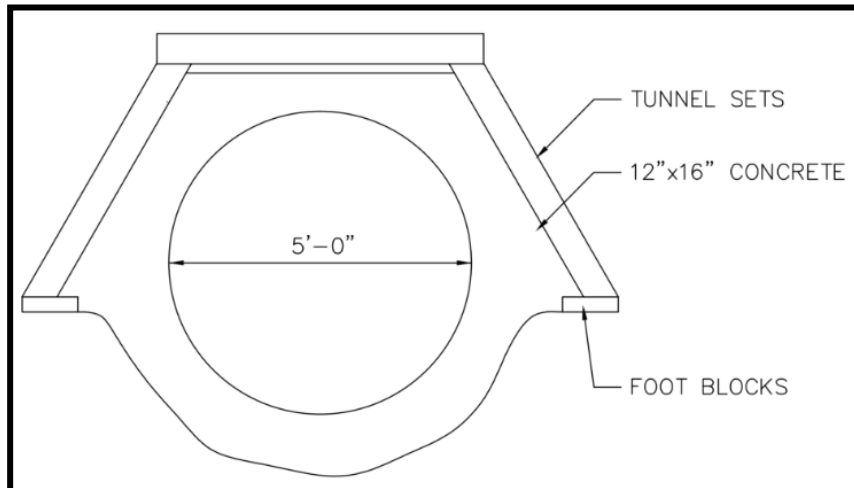
- Downtown Green Bay and Village of Allouez
- Three interceptors
  - Fox River Crossing (FRC)
  - East Fox River Interceptor (EFR)
  - East River Interceptor (ERI)
    - Old ERI Abandonment





# Project Location – FRC

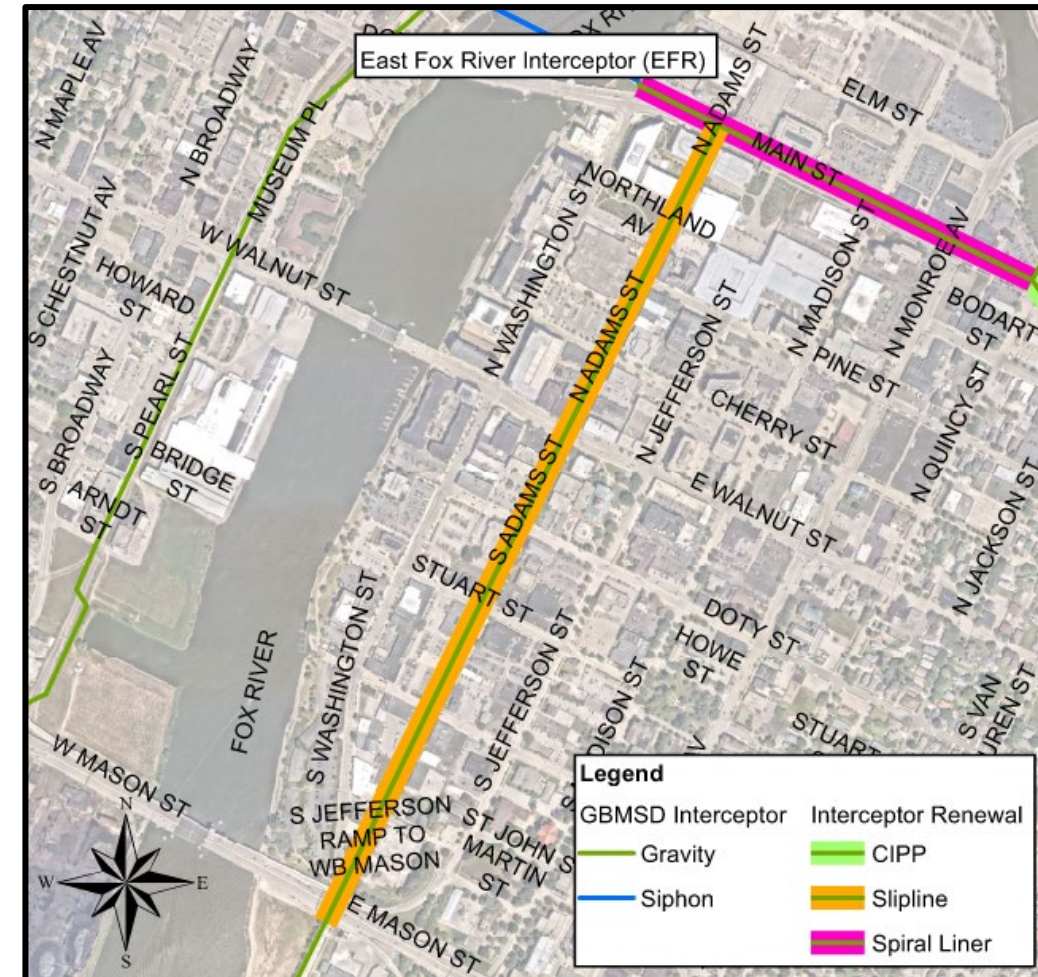
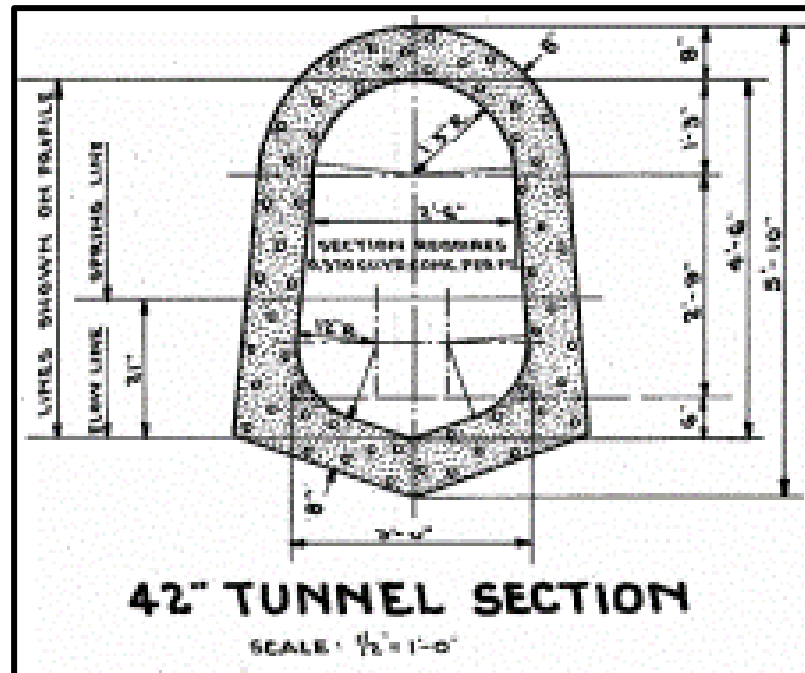
- 2,055 feet, 60" diameter concrete
- Located primarily on Main Street
- Contractor: Engineering & Construction Innovations





# Project Location – EFR

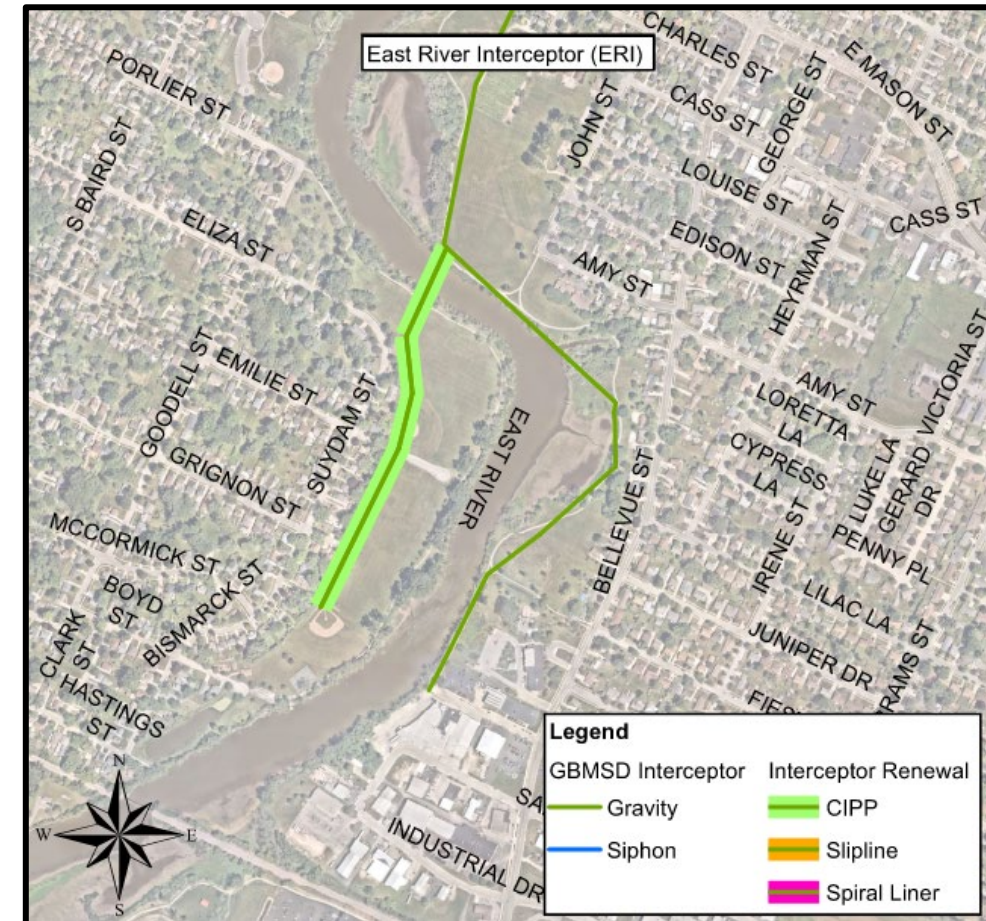
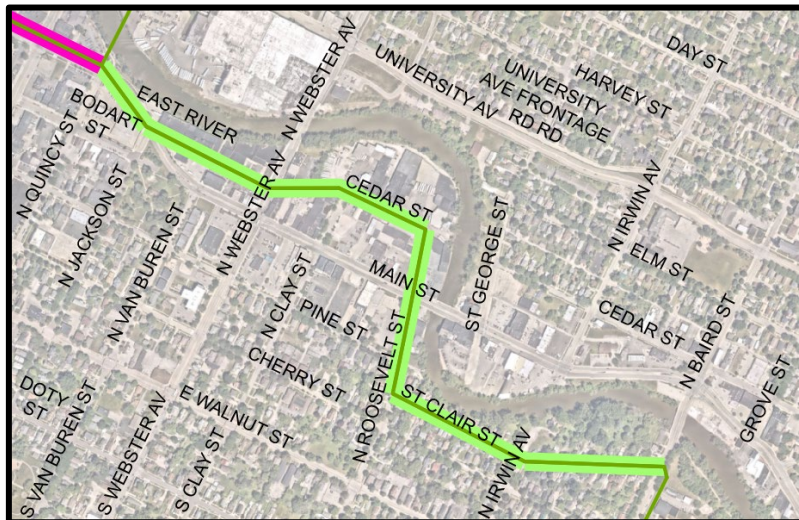
- 4,200 feet, 42" and 48" horseshoe
- Located primarily on Adams Street
- Contractor: Engineering & Construction Innovations





# Project Location – ERI

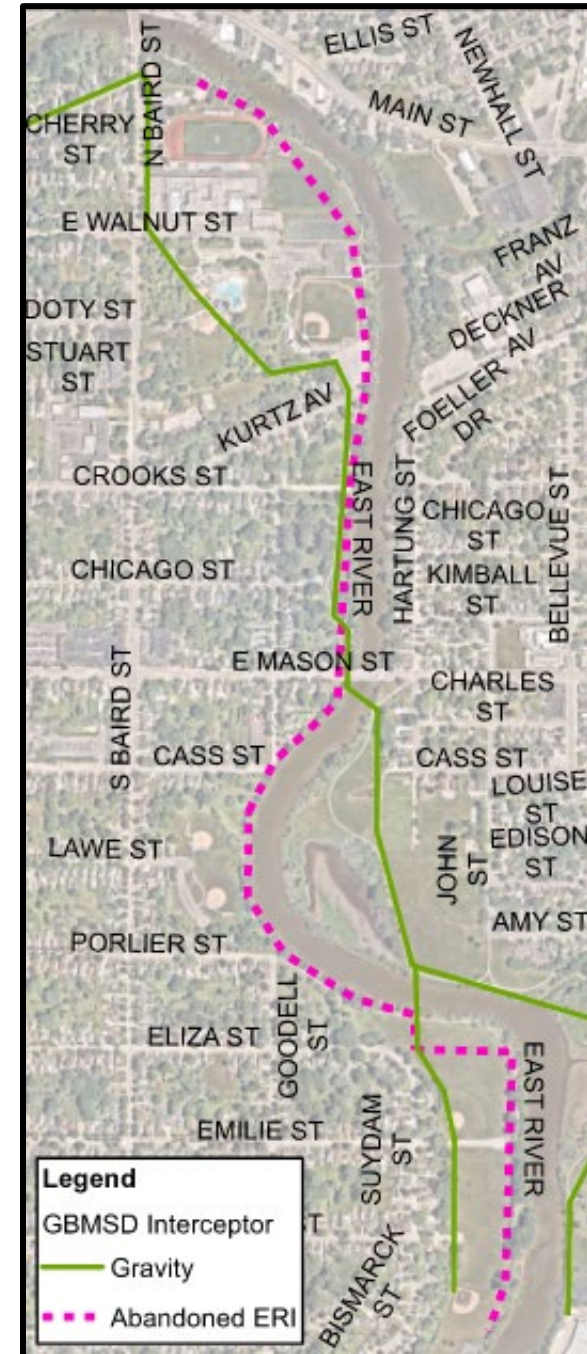
- 7,000 feet of 30", 42" and 48" circular sewer
- Downstream Located between Quincy Street and N. Baird Street
- Upstream located between East River and Village of Allouez
- Contractor: Michels Trenchless





# Project Location – ERI Abandonment

- Old East River Interceptor (ERI)
  - 7,300 feet of 24" and 36" abandoned sewer
  - Located along East River between North Baird Street and Village of Allouez
- Contractor: Michels Trenchless





# Downtown Interceptor Renewal Project: Planning & Design



# Project Planning

- Alternatives Analysis:
  - Reviewed Condition
  - Explored rehabilitation/replacement options for pipes and manholes
  - Considered constructability, community, and environmental impacts
  - Evaluated cost for viable options
- Recommendation:
  - Cost effective trenchless rehabilitation
  - Full structural renewal

Category	Topic	Weight	Scores
Constructability	Estimated Construction Schedule	5	2 1 0
	Flow Control / Temporary Conveyance	9	2 1 0
	Safety / Installation Risks	7	2 1 0
	Excavation / Access Pit (full depth excavation)	4	2 1 0
O&M	O&M Requirements	5	2 1 0
	Replace aging infrastructure	6	2 1 0
	Track record of proposed technology	9	2 1 0
Hydraulics / Design Life	Interceptor capacity meets projected future flows	20	2 1 0
	Design life of selected technology	10	2 1 0
Easements and Permitting	Permitting and Coordination Requirements	2	2 1 0
	Required construction easements	3	2 1 0
Community	Impacts to Residential Properties	3	2 1 0
	Impacts to Businesses	5	2 1 0
	Disruption to parks, green spaces, pedestrian trails	2	2 1 0
	Environmental impact of proposed technology (during manufacturing and installation)	2	2 1 0
	Roadway pavement disturbance	3	2 1 0
	Traffic Control - Disruptions to Traffic (Include impacts from Temporary Flow Conveyance system)	5	2 1 0
		100	

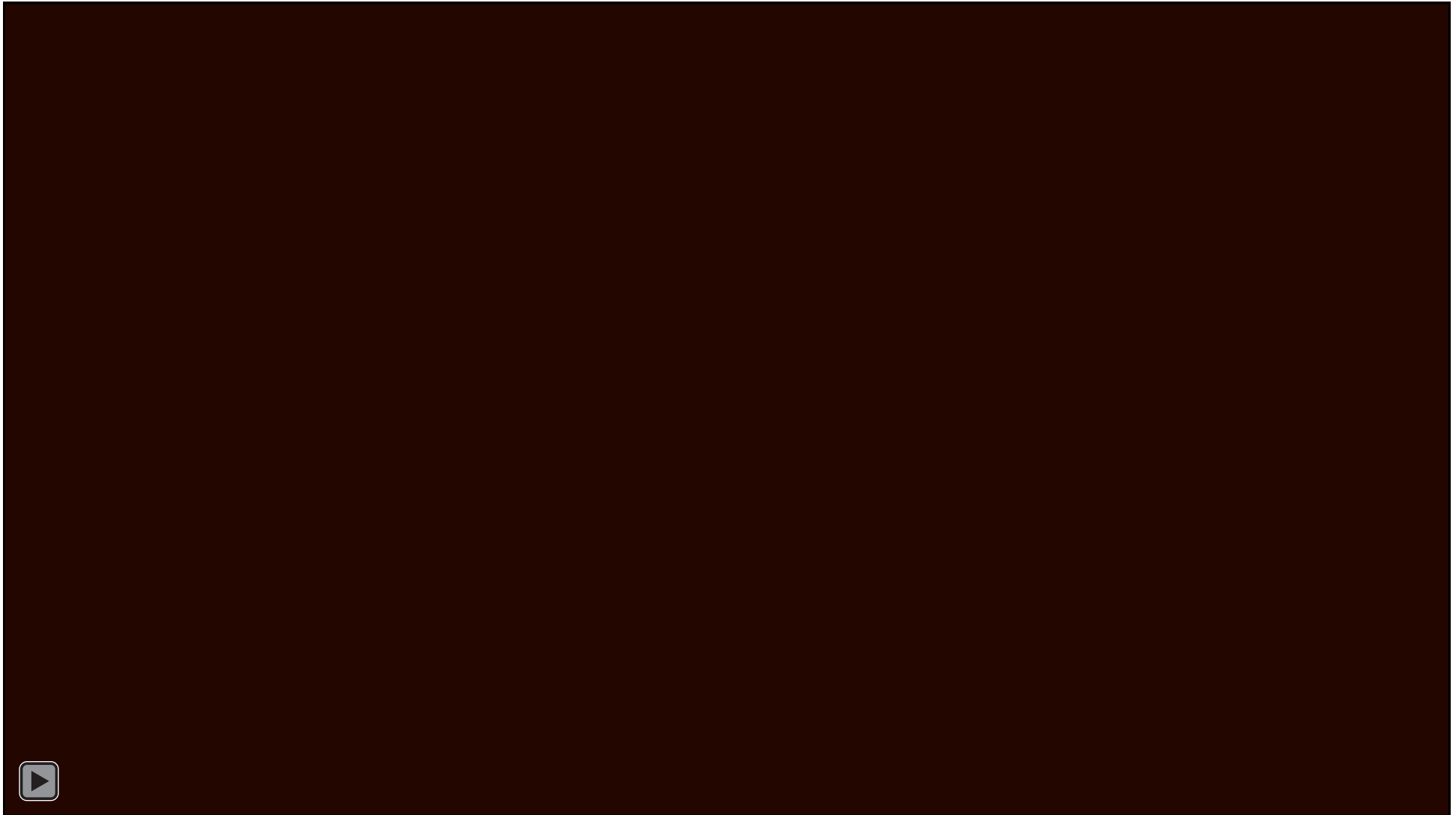
# Project Design

- Site 1 (FRC):
  - Spiral wound lining





# Project Design



Video Credit: Nassco.org



# Project Design

- Site 2 (EFR):
  - Slip lining





# Project Design



Photo Credit: Cloud 9 Services



# Project Design

- Site 3 (ERI):
  - Cured-in-place pipe (CIPP) lining

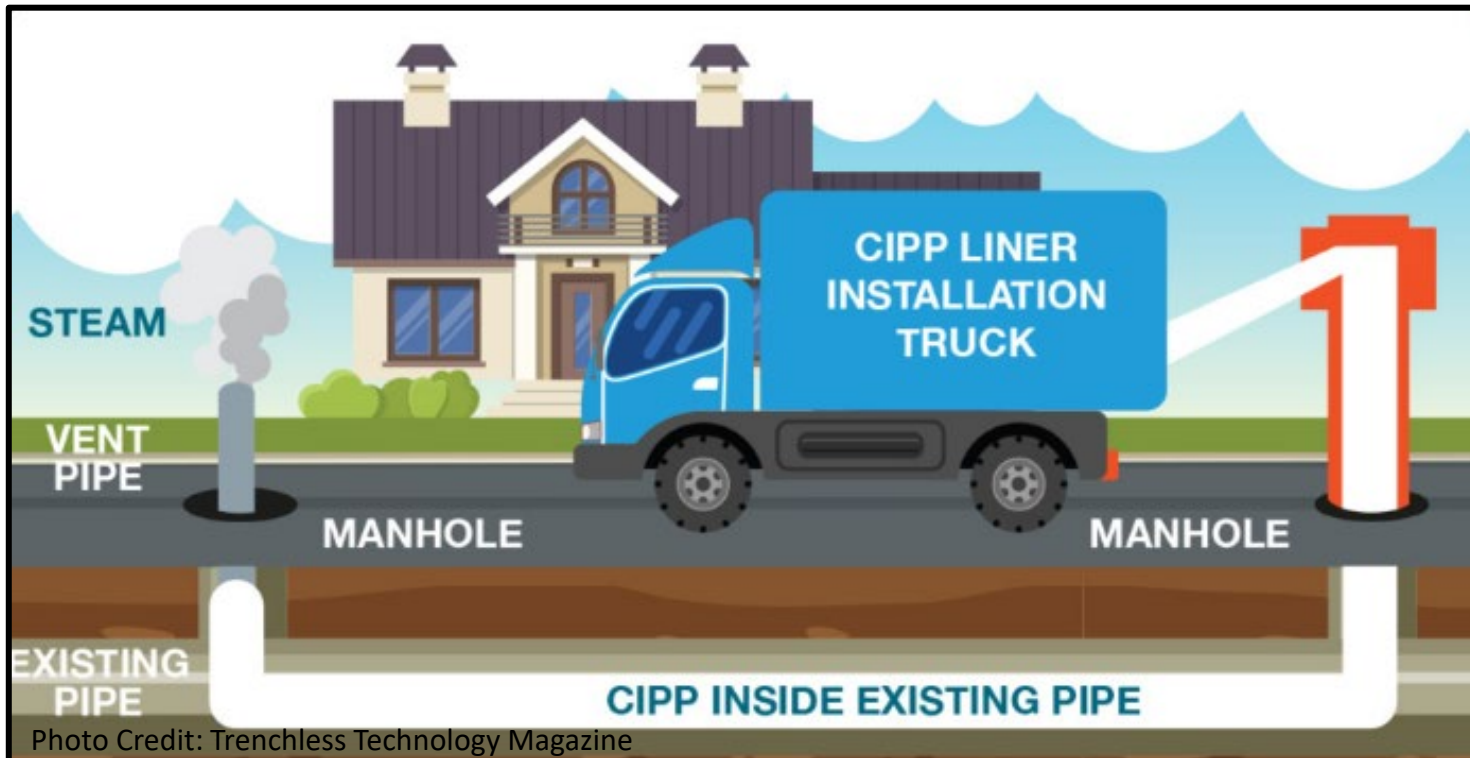


Photo Credit: Trenchless Technology Magazine

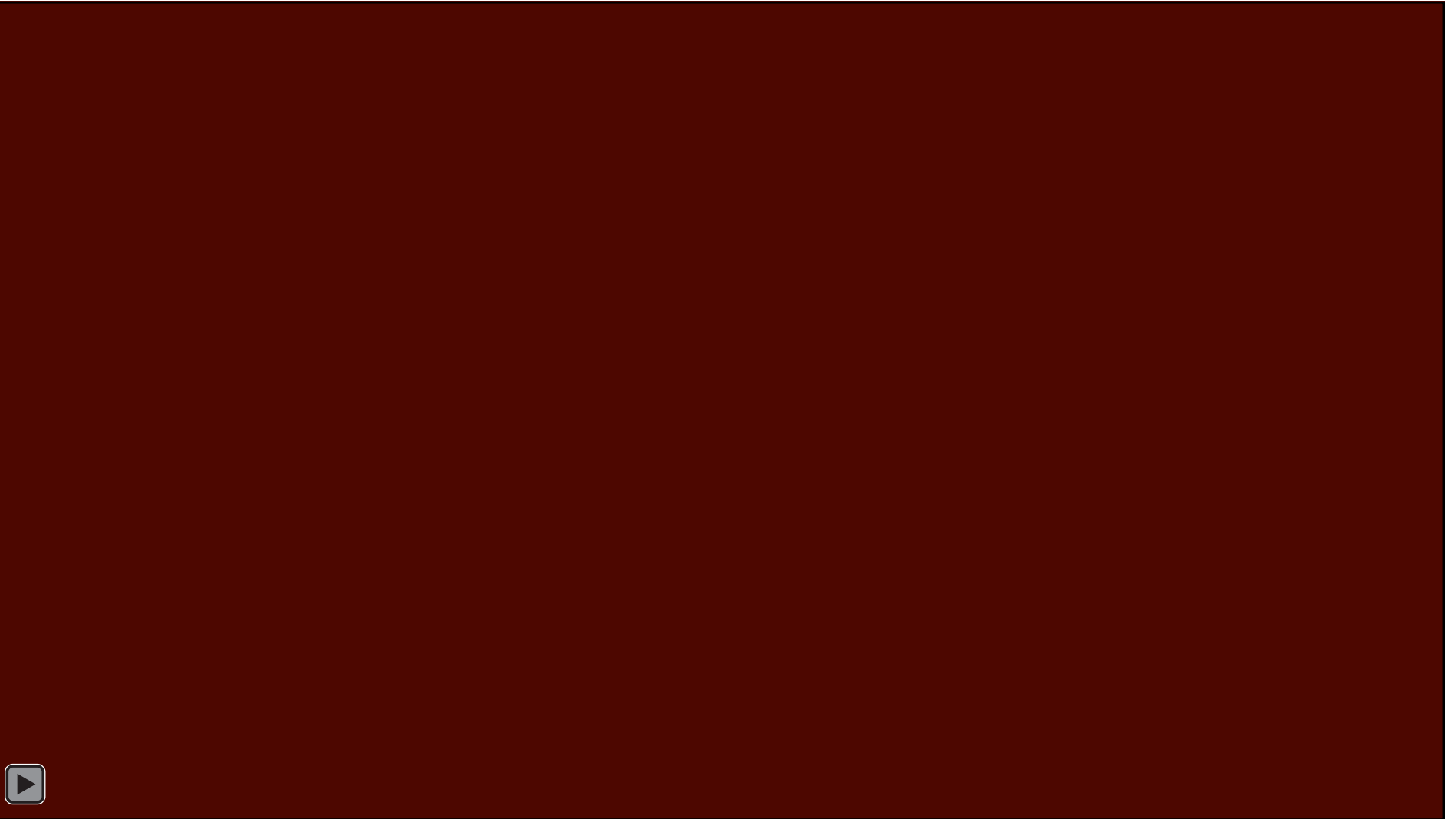


Photo Credit: Trenchless Technology Magazine





# Project Design



Video Credit: Nassco.org



An aerial photograph of a wastewater treatment plant during a vibrant sunset. The sky is filled with orange and yellow clouds. In the foreground, there are several large, rectangular concrete structures, likely part of the treatment process. In the background, a body of water is visible, and the city skyline can be seen in the distance.

# Downtown Interceptor Renewal Project: Impacts



# Project Impacts – FRC

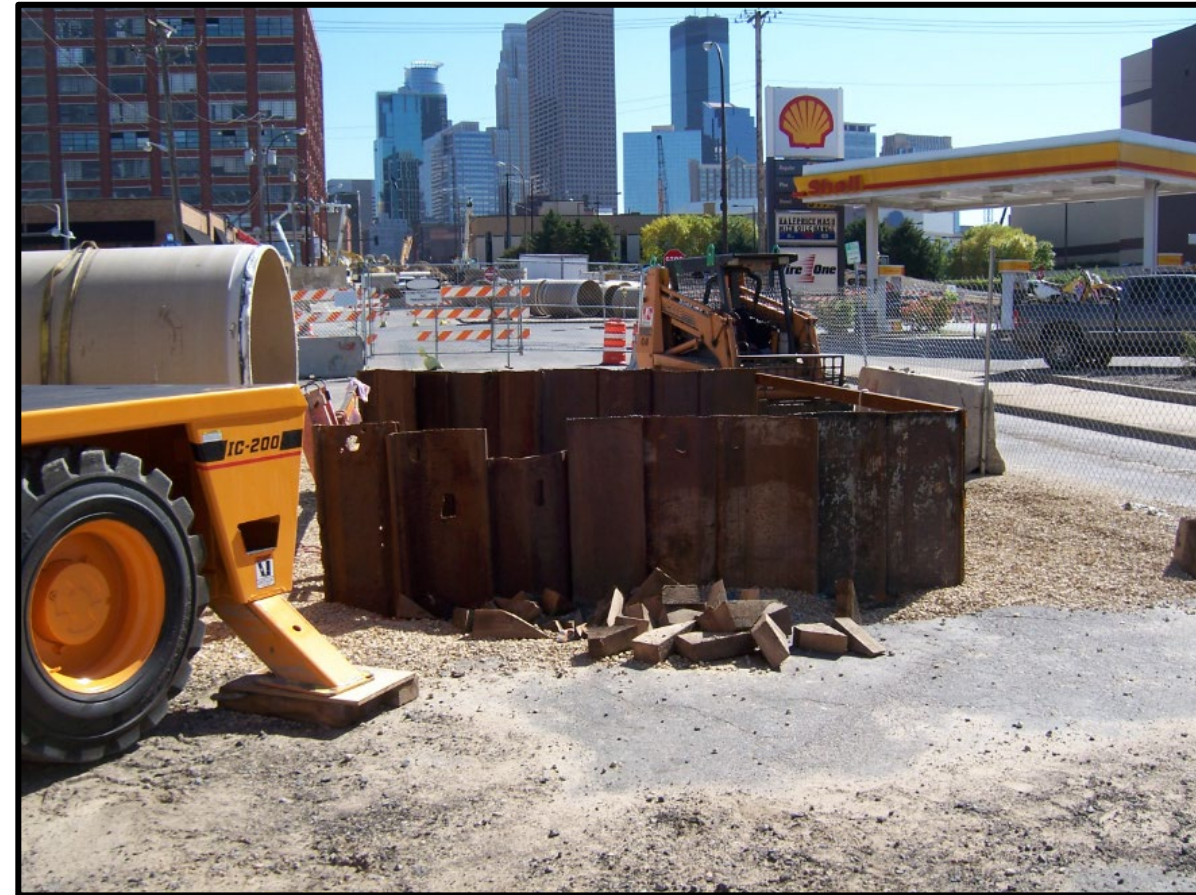
- Sidewalk and trail closures
- Detour / Traffic control on Main Street





# Project Impacts – EFR

- Slip Lining Insertion Pit (Adams Street)
- Traffic control





# Project Impacts – ERI

- Disruption to parks and trails
- Driveways and sidewalks
- Traffic control







# Downtown Interceptor Renewal Project: Schedule





# Project Schedule

- Contractor will control day-to-day schedule
- Some restrictions based on Customer Communications
- Notice to Proceed: Issued
- ERI Construction Start: June 2025
- DIRP Construction Start: October 2025
- Final Completion: October 2026





*Thank you!*

*Questions?*

**Stay tuned to NEW Water news**

Sign up for our E-newsletter, follow us on social media, get in touch

[www.newwater.us](http://www.newwater.us)

