

**AGENDA
GREEN BAY METROPOLITAN SEWERAGE DISTRICT
COMMISSION MEETING**

April 22, 2026

**A hybrid meeting will be held both via Zoom Videoconference
and in the Solids Building 310 Conference Room
2231 N. Quincy Street
8:30 a.m.**

If a member of the public would like to participate in the meeting via Zoom, please contact NEW Water at (920) 432-4893 for access to the videoconference.

Vision: Protecting our most valuable resource, water

- 1) Safety Moment. (N. Qualls)
- 2) Approval of minutes of the Commission meeting held March 25, 2026. (N. Qualls)
- 3) Request Commission approval to award the Green Bay Facility Pumping and High Strength Waste Improvements Project to August Winter & Sons, Inc., for a total amount of \$6,322,789. (E. Brewer)
[Click Here: Memo](#)
[Click Here: Attachment](#)
- 4) Request Commission approval of Amendment No.1 to the existing agreement with Strand Associates for the Green Bay Facility Miscellaneous Pumping and High Strength Waste improvements Project, increasing the projected engineering services fee by \$84,700. (E. Brewer)
[Click Here: Memo](#)
[Click Here: Attachment](#)
- 5) Sewer Plan Approvals: (L. Sarau)
[Click Here: Memo](#)
 - a) Village of Luxemburg, Project #2011-05-25, GBMSD Request #2026-12.
[Click Here: Village of Luxemburg Map](#)
[Click Here: NEW Water Map](#)
 - b) Village of Howard, Project #26015, GBMSD Request #2026-13.
[Click Here: Village of Howard Map](#)
[Click Here: NEW Water Map](#)
 - c) Town of Lawrence, Project MCM#L0017-09-22-00517
[Click Here: Town of Lawrence Map](#)
[Click Here: NEW Water Map](#)
- 6) Convene in closed session, under State Statute 19.85 (1)(g) for the purpose of conferring with legal counsel for the Commission who is rendering oral or written advice concerning strategy to be adopted by the Commission with respect to litigation in which it is or is likely to become involved:
 - a) Potential litigation resulting from environmental testing by a significant industrial user.

NEW WATER, THE BRAND OF THE GREEN BAY METROPOLITAN SEWERAGE DISTRICT

- 7) Reconvene in open session.
- 8) Update of projects:
- a) Quarterly Capital Project Updates. (L. Sarau)
[Click Here: Report](#)
 - b) Downtown Interceptor Renewal Project. (M. McGuire)
[Click Here: Report](#)
 - c) GBF North Plant Clarifier Rehabilitation Project. (B. Brown)
[Click Here: Report](#)
- 9) Green Bay Facility Administration Building Elevator Update. (P. Wescott)
[Click Here: Memo](#)
[Click Here: Presentation](#)
- 10) Adaptive Management Program (E. Houghton)
[Click Here: Memo](#)
[Click Here: Presentation](#)
- 11) 2025 Watershed Monitoring Program Update. (B. Young)
[Click Here: Memo](#)
[Click Here: Presentation](#)
- 12) March 2026 Financials. (C. Mueller)
[Click Here: Memo](#)
[Click Here: Income Statement](#)
[Click Here: Income Statement Legends](#)
[Click Here: Statement of Net Position](#)
[Click Here: Statement of Net Position Legends](#)
- 13) March 2026 Operations Report. (P. Wescott)
[Click Here: Memo](#)
[Click Here: Effluent Report – Green Bay Facility](#)
[Click Here: Graph of Effluent Report](#)
[Click Here: Effluent Report –De Pere Facility](#)
[Click Here: Graph of Effluent Report](#)
[Click Here: R2E2 Energy Report](#)
[Click Here: R2E2 Energy Graph](#)
- 14) Executive Director’s report: (N. Qualls)
[Click Here: Memo](#)
- a) May Commission Meeting.
 - b) Wet Weather & Public Service Announcement.
 - c) Community Outreach Highlights: NEWMA, STEM Family Day, and Leadership Green Bay.

Memorandum

TO: Commission
Nathan Qualls

FROM: Eliza Brewer

DATE: April 22, 2026

SUBJECT: Construction Contract Award for Green Bay Facility Miscellaneous Pumping and High Strength Waste Improvement Project #250006-CO

Background

In May of 2025, the Commission approved an Agreement with Strand Associates to provide engineering services for the Green Bay Facility Miscellaneous Pumping and High Strength Waste Improvement Project. A primary driver for the project involves reliability concerns related to aging infrastructure associated with return activated sludge (RAS), waste activated sludge (WAS), and basin drain pumping systems constructed in the 1970s and 1990s. In addition, rapid degradation resulting from severe operating conditions (corrosive materials, high temperatures, abrasive by-products) has impacted the safety, reliability, and longevity of high-strength waste (HSW) and incinerator ash slurry piping systems. Strand worked with NEW Water Staff to develop design documents for the rehabilitation of these critical systems.

Project Bidding

Bid documents incorporated a comprehensive base bid with two deductive alternatives for a dedicated HSW pipeline and for a replacement ash slurry pipeline. This project was publicly advertised in February, and three contractors were prequalified to bid. A single bid was received by the March 31, 2026, deadline. That bid from August Winter & Sons, Inc. was within the engineer's estimated cost range.

The following table summarizes the bidding information.

Bidder	Base Bid Value	Bid with Alternatives Deducted
August Winter & Sons, Inc.	\$5,747,990	\$5,182,120
Engineer's Estimate	\$4,870,000 to \$6,490,000	

NEW Water staff and the design engineer have reviewed the documentation and believe it to be a responsive and competitive bid. With acknowledgment of staff preferences to accept both bid alternatives, August Winter & Sons, Inc. is the selected bidder with a total cost of \$5,747,990.

The construction contract requires the contractor to maintain \$5,000,000 of aggregate liability insurance and \$10,000,000 of umbrella liability coverage. Additional information is provided in the attached letter of recommendation and bid tabulation summary from Strand Associates.

Recommendation

NEW Water staff recommends Commission approval to award the construction contract to August Winter & Sons, Inc. in the amount of \$5,747,990. A 10% contingency of \$574,799 to be administered under the authority of the Executive Director is also recommended.

Commission Action

Request Commission approval to award the construction contract for the Green Bay Facility Miscellaneous Pumping and High Strength Waste Improvement Project #250006 to August Winter & Sons, Inc. in the amount of \$5,747,990 with a 10% contingency of \$574,799 administered under the authority of the Executive Director for a total amount of \$6,322,789.

Attachment: Strand Associates Letter of Recommendation and Bid Tabulation



Strand Associates, Inc.[®]
910 West Wingra Drive
Madison, WI 53715
(P) 608.251.4843
www.strand.com

March 31, 2026

Mr. Robert Brown, Staff Engineer
NEW Water/Green Bay Metropolitan Sewerage District
2231 North Quincy Street
Green Bay, WI 54302

Re: GBF Miscellaneous Pumping and High Strength Waste Improvements
Contract 250006
NEW Water/Green Bay Metropolitan Sewerage District

Dear Bob,

Bids for the above-referenced Project were opened on March 31, 2026. One Bid was received with the resulting Bid tabulation enclosed. The low Bid of \$5,747,990 was within ENGINEER's opinion of probable construction cost range of \$4,870,000 to \$6,490,000. ENGINEER's cost range was developed using the Association of Advancement of Cost Engineering methodology and is considered a Class 3 estimate.

August Winter & Sons, Inc. (August Winter) of Appleton, Wisconsin, was the apparent low Bidder at \$5,747,990. The Bid included a Bid Bond for 5 percent and Addendum Nos. 1 and 2 were acknowledged. The Bid is deemed to be responsive.

Strand Associates, Inc.[®] has previously worked with August Winter on projects for the Wolf Treatment Plant Commission, City of Appleton, and Village of Campbellsport, Wisconsin.

If you determine that August Winter is a responsible Bidder after your evaluation of their qualifications, we recommend proceeding with award of the Contract in accordance with Article 18 of the Instructions to Bidders.

Sincerely,

STRAND ASSOCIATES, INC.[®]

Glenn W. Tranowski, P.E.

Enclosure

GBF Miscellaneous Pumping and High Strength Waste Improvements					
Contract 250006					
NEW Water/Green Bay Metropolitan Sewerage District					
Solicitor: Strand Associates, Inc.					
March 31, 2026 10 A.M. Central Time					
					August Winter & Sons, Inc
Section Title	Item Description	UofM	Quantity	Unit Price	Extension
Lump Sum Base Bid		LS	1	\$5,747,990.00	\$5,747,990.00

Bid Alternative No. 1					August Winter & Sons, Inc
Bid Alternative No. 1 shall be deducted from the Contract Lump Sum Base Bid if OWNER elects to remove the following work, as indicated on the Drawings: Demolition of all existing HSW piping and associated supports, HSW valves, HSW flow meters, HSW piping appurtenances, and associated electrical demolition; and all new HSW piping and associated supports, HSW valves, HSW flow meters, and associated electrical work					
		LS	-1	\$327,620.00	(\$327,620.00)

Bid Alternative No. 2					August Winter & Sons, Inc
Bid Alternative No. 2 shall be deducted from the Contract Lump Sum Base Bid if OWNER elects to remove all demolition of the existing PVC ash slurry piping and all new ash slurry piping indicated in the Drawings.					
		LS	-1	\$238,250.00	(\$238,250.00)

Memorandum

TO: Commission
Nathan Qualls

FROM: Eliza Brewer

DATE: April 22, 2026

SUBJECT: GBF Miscellaneous Pumping and High Strength Waste Improvements
Project Amendment No. 1

Background

In May 2025, the Commission approved an agreement with Strand Associates, Inc. for engineering services associated with the Green Bay Facility (GBF) Miscellaneous Pumping and High Strength Waste Improvements Project. The agreement was established in the amount of \$748,700, with a \$75,000 contingency, to be administered under the authority of the Executive Director.

During the course of the design effort, it was identified that the project construction timeline would extend beyond the existing engineering contract's expiration date. This anticipated extension of construction services resulted in a request for additional funds through the proposed Amendment No. 1 (attached).

Contract/Amendment	Description	Amount	Remaining Contingency	Authorized Amount
Original Agreement	Misc. Pumping & HSW Project Design Services	\$748,700	\$75,000	\$823,700
Proposed Amendment 1	Extension of Engineering Services	\$119,700	\$40,000	\$908,400

NEW Water staff have reviewed the scope changes outlined in Amendment No. 1 and have determined that the cost is appropriate for the additional services requested. A portion of the previously approved contingency amount (shown in the table above) will be allocated to this Amendment, while a portion should be retained for potential remaining issues in the construction portion of the project.

Recommendation

Staff recommends Commission approval of Amendment No. 1 for additional engineering services for the GBF Miscellaneous Pumping and High Strength Waste Improvements Project in the amount of \$119,700. After allocating a portion of the contingency to this amendment, the total increase to the engineering contract would be \$84,700.

Commission Action

Request Commission approval of Amendment No. 1 for the Green Bay Facility Miscellaneous Pumping and High Strength Waste Improvements Project #250006 with Strand Associates, Inc., for added engineering services of \$119,700, resulting in an increase of \$84,700 to the previously approved amount.

Attachment: Strand Amendment No. 1



Strand Associates, Inc.[®]
910 West Wingra Drive
Madison, WI 53715
(P) 608.251.4843
www.strand.com

April 14, 2026

NEW Water/Green Bay Metropolitan Sanitary District
2231 North Quincy Street
Green Bay, WI 54302

Attention: Ms. Eliza Brewer, Staff Engineer

Re: Amendment No. 1 to the May 16, 2025, Agreement for
Design, Bidding-, and Construction-Related Services
Green Bay Facility Miscellaneous Pumping and High-Strength Waste Improvements

This is Amendment No. 1 to the referenced Agreement.

Under **Compensation**, in the first paragraph, CHANGE \$733,600 to "\$868,400" and ADD the following:

"The proposed \$868,400 total fee includes the previously approved \$733,600 base fee plus the additional \$15,100 amount previously approved for the **High Strength Waste Feed Force Main Services**, along with the added tasks included in this Amendment for an additional fee of \$119,700."

Under **Schedule**, CHANGE March 31, 2027, to "October 29, 2027."

Under Exhibit A, **Scope of Services**,

Design Services, Item No. 5, ADD the following:

- "e. Add a motorized valve and a flow meter on the HSW feed pipe upstream of Digesters No. 1 and No. 2 (two motorized valves and two flow meters total)."

Construction-Related Services,

Item No. 1,

Item e., CHANGE 11 to "17."

Item h., CHANGE 12 to "18."

In Item No. 2, CHANGE 810 to "1,240."

Item b., CHANGE 11 to "17."

Item g., CHANGE 12 to "18."

REPLACE the Exhibit B—Anticipated Hours and Fee in its entirety with the one enclosed with this Amendment.

NEW Water/Green Bay Metropolitan Sanitary District

Page 2

April 14, 2026

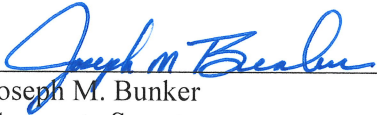
IN WITNESS WHEREOF the parties hereto have made and executed this Amendment.

ENGINEER:

OWNER:

STRAND ASSOCIATES, INC.®

NEW WATER/GREEN BAY METROPOLITAN
SEWERAGE DISTRICT



Joseph M. Bunker
Corporate Secretary

4/14/26

Date

Nathan R. Qualls, P.E.
Executive Director

Date

Memorandum

TO: Commission
Nathan Qualls

FROM: Lisa Sarau

DATE: April 9, 2026

SUBJECT: Sewer Plan Approval

Background

The Village of Luxemburg, the Village of Howard, and the Town of Lawrence have submitted requests for approval of sanitary sewer plans. Location maps are attached. These requests include the following:

Village of Luxemburg Sanitary Sewer Plan Project #2011-05-25 – Church Road Subdivision – First Addition: GBMSD Request #2026-12. The Village of Luxemburg project is intended to serve 6.5 acres of residential development. The ultimate service area for the proposed sewer is 15 acres of residential development. Flow from the development will be tributary to the Wequiock Creek Interceptor, which is consistent with NEW Water’s planning documents.

Village of Howard Sanitary Sewer Plan Project #26015 – Hillside Heights: GBMSD Request #2026-13. The Village of Howard project is intended to serve 7.4 acres of residential development. The proposed sewer is not intended to serve anything besides this residential development in the future, therefore the ultimate service area contributing to the proposed sewer is also 7.4 acres. Flow from the development will be tributary to the Duck Creek Interceptor, which is consistent with NEW Water’s planning documents.

Town of Lawrence Sanitary Sewer Plan Project #L0017-09-22-00517 – 2026 American Boulevard De Pere Connection: GBMSD Request #2026-15. The Town of Lawrence project is intended to serve 100 acres of mostly residential development initially. The ultimate service area for the proposed sewer is 1,300 acres of mixed development, which will include residential, business/commercial, and industrial development. Flow from the development will be tributary to the Ninth Street Interceptor, which is consistent with NEW Water’s planning documents.

Recommendation

Staff recommends Commission approval of the plans for the proposed sewers by the Village of Luxemburg, Village of Howard, and Town of Lawrence to serve land within the NEW Water service area. This approval is subject to favorable recommendations from Brown County Planning and final approval by the WDNR.

Commission Action

Request Commission approval of the Village of Luxemburg, Village of Howard, and Town of Lawrence sewer plans.

Attachments

CHURCH ROAD SUBDIVISION - FIRST ADDITION UTILITY AND ROADWAY CONSTRUCTION VILLAGE OF LUXEMBURG KEWAUNEE COUNTY, WISCONSIN CONTRACT NO. 2011-05-25 FEBRUARY 2026

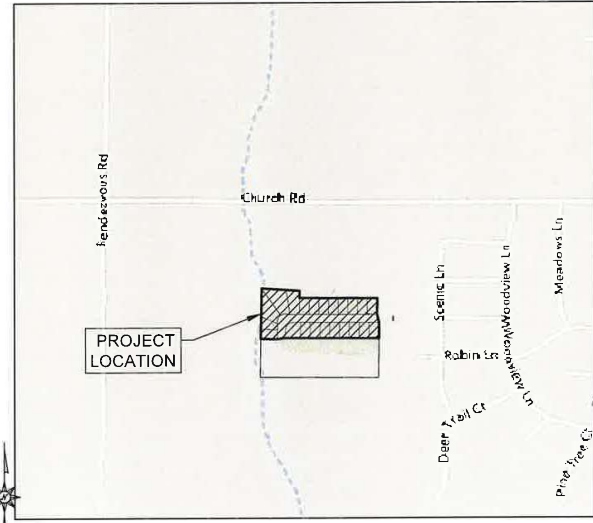
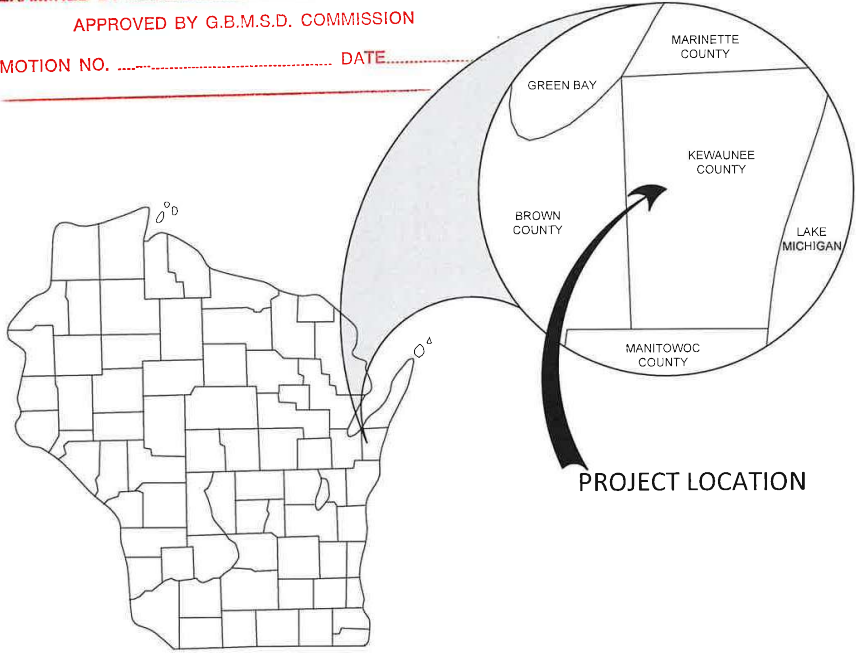
SHEETS INDEX

1	TITLE SHEET
2	GENERAL NOTES, ABBREVIATIONS, & SYMBOLS
3	EROSION CONTROL NOTES
4	EROSION CONTROL DETAILS
5	EROSION & TRAFFIC CONTROL PLANS
6	TYPICAL SECTION & MAILBOX CBU
7 - 10	UTILITY DETAILS
11	SITE DETAILS
12 - 14	ZELLNER ROAD - PLAN & PROFILE
15	STORM SEWER EASEMENT 1 - PLAN & PROFILE
16	STORM SEWER EASEMENT 2 - PLAN & PROFILE
17	GRADING PLAN
18 - 21	ZELLNER DRIVE CROSS SECTIONS
1	CHURCH ROAD SUBDIVISION - FIRST ADDITION PLAT

MACHIV
ENGINEERING - SURVEYING - ENVIRONMENTAL
2260 Salschieder Court Green Bay, WI 54313
PH: 920-569-5765; Fax: 920-569-5767
www.machiv.com



G. B. M. S. D. PLAN APPROVAL
REQUEST NO. GBMSD # 2026-12
PROJECT NO. VILLAGE OF LUXEMBURG # 2011-05-25
EXAMINED BY C. AMENSON DATE 3/26/26
APPROVED BY G.B.M.S.D. COMMISSION
MOTION NO. _____ DATE _____



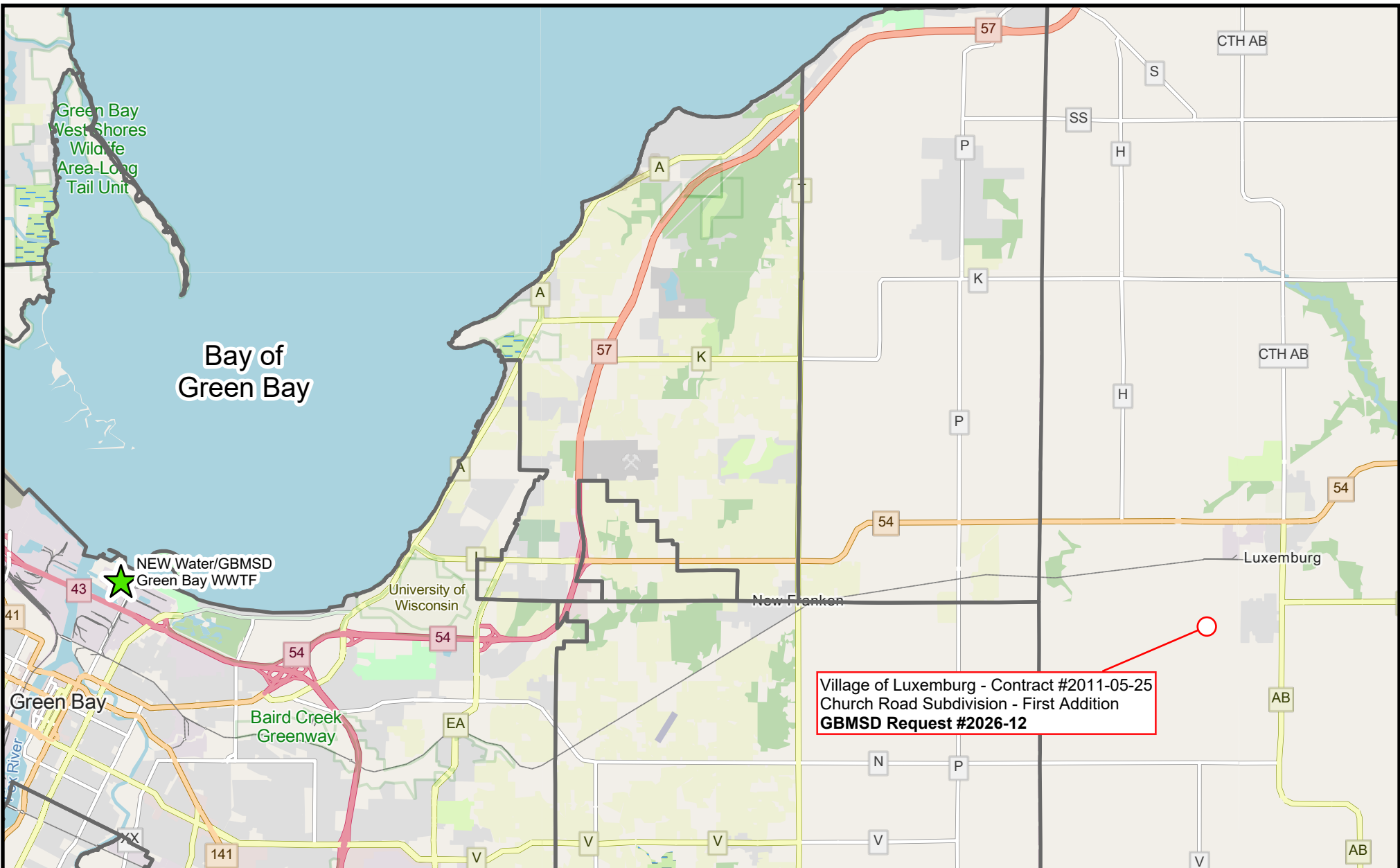
LUXEMBURG LOCATION MAP

I:\machiv\macha\l\obs\2011-05-25 Church Rd Subdivision First Addition\DRAWINGS\2011-05-25 Eng.dwg 3/19/2026 10:33:52 AM

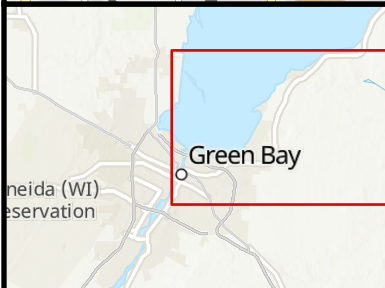
TYCORE BUILT
CHURCH RD SUBDIVISION - 1ST ADD.
UTILITY & ROADWAY CONSTRUCTION
VILLAGE OF LUXEMBURG
KEWAUNEE COUNTY, WI
TITLE SHEET

NO.	REVISION DESCRIPTION

DATE: FEBRUARY 25, 2026
DRAFTED BY: RPH/ML
CHECKED BY:
PROJECT NO.: 2011-05-25
DRAWING NUMBER
SHEET NUMBER



Village of Luxemburg - Contract #2011-05-25
 Church Road Subdivision - First Addition
GBMSD Request #2026-12



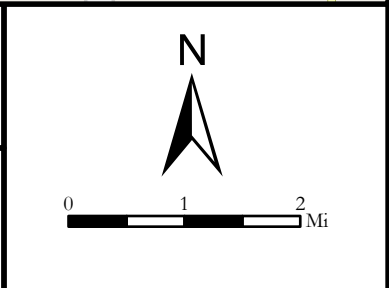
LEGEND

 Municipalities



April 2026

**GBMSD Sewer Plan Approval
 Request Location**



INDEX OF SHEETS

- 1 TITLE
- 2 EROSION CONTROL NOTES
- 3 EROSION CONTROL PLAN
- 4-5 HILLSDALE CIRCLE PLAN AND PROFILE

G. B. M. S. D. PLAN APPROVAL

GBMSD# 2026-13
 REQUEST NO. 2026-13

PROJECT NO. VILLAGE OF HOWARD PROJECT # 26015
 EXAMINED BY Richard G. Garris DATE 3/23/26

APPROVED BY G.B.M.S.D. COMMISSION

MOTION NO. _____ DATE _____

HILLSDALE HEIGHTS

VILLAGE OF HOWARD

BROWN COUNTY, WISCONSIN

VILLAGE PROJECT NO. 26015

MARCH, 2026



PROJECT UTILITIES CONTACTS:

WISCONSIN PUBLIC SERVICE CORP (ELECTRIC)
 SCOTT ZELLNER
 SCOTT.ZELLNER@WISCONSINPUBLICSERVICE.COM
 OFFICE: (920) 617-5068
 MOBILE: (920) 680-2188

WISCONSIN PUBLIC SERVICE CORP (GAS)
 ADAM LEY
 ADAM.LEY@WISCONSINPUBLICSERVICE.COM
 OFFICE: (920) 433-1079

AT&T
 PAUL KRAUTKRAMER
 PK3856@ATT.COM
 OFFICE: (920) 433-4142
 MOBILE: (920) 227-8893

SPECTRUM
 GEOFF TULACHKA
 GEOFF.TULACHKA@CHARTER.COM
 OFFICE: (920) 213-9400

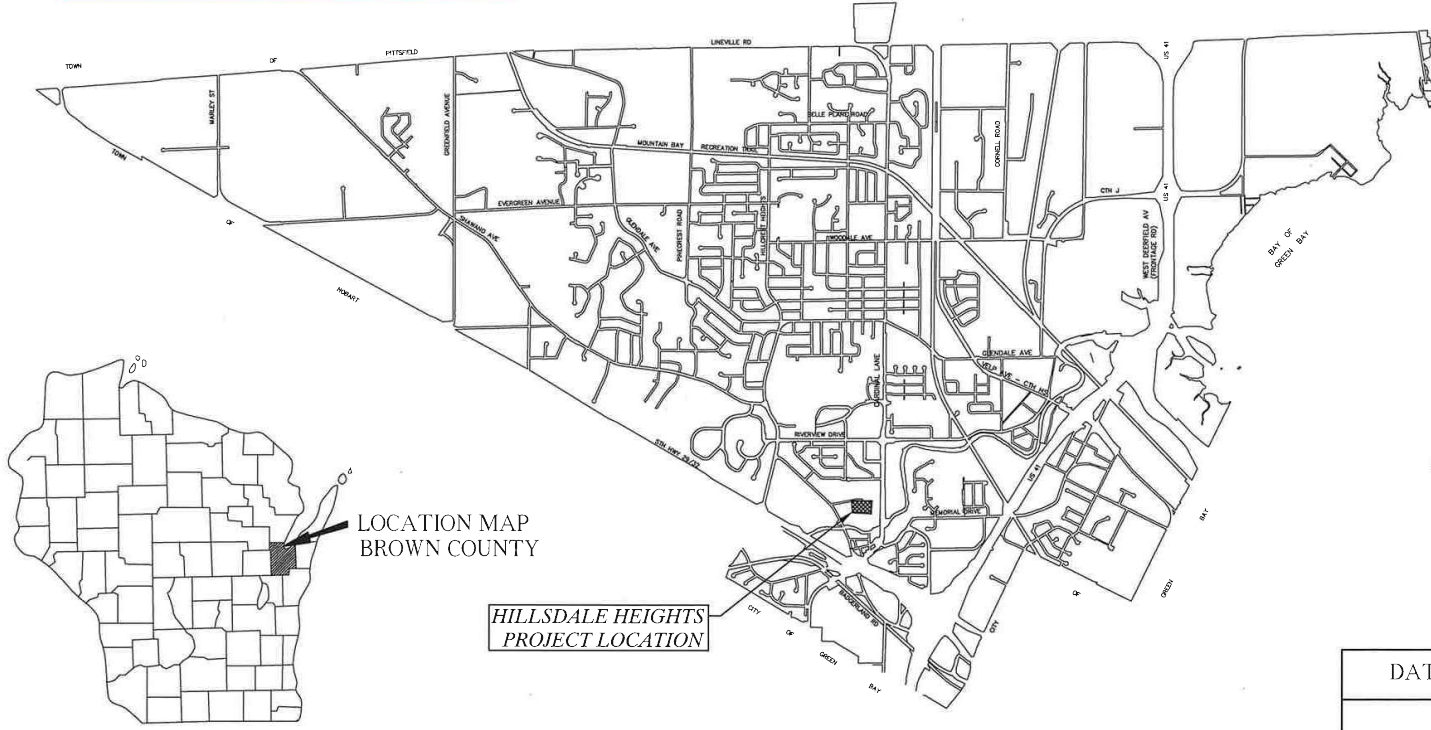
NSIGHT / NET LEC LLC
 RICK VINCENT
 RICK.VINCENT@NSIGHT.COM
 OFFICE: (920) 617-7316

TDS
 SEAN MURRAY
 SEAN.MURRAY@TDSLECOM.COM
 OFFICE: (608) 664-4606
 MOBILE: (608) 686-5207

VILLAGE OF HOWARD
 GEOFF FARR
 GFARR@VILLAGEOFHOWARD.COM
 OFFICE: (920) 434-4060

BROWN COUNTY PLANNING, SURVEY COORDINATION
 JEFF DUMEZ
 OFFICE: (920)448-6295

UNDERGROUND UTILITIES SHOWN ON PLANS ARE TAKEN FROM UTILITY COMPANIES RECORD DRAWINGS OR PRELIMINARY FIELD LOCATES.
 WS. STATUTES 182.0175 (1974) REQUIRES MINIMUM OF 3 WORK DAYS NOTICE BEFORE YOU EXCAVATE.
 TO OBTAIN LOCATION OF PARTICIPANTS' UNDERGROUND FACILITIES CALL DIGGER'S HOTLINE 1-800-242-8511 TOLL FREE.



ORIGINAL PLANS PREPARED BY
 VILLAGE OF HOWARD ENGINEERING DEPT.
 1336 CORNELL RD. GREEN BAY, WI 54313
 (920) 434-4060

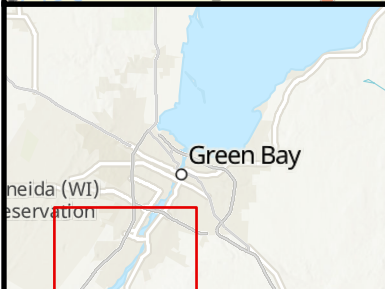
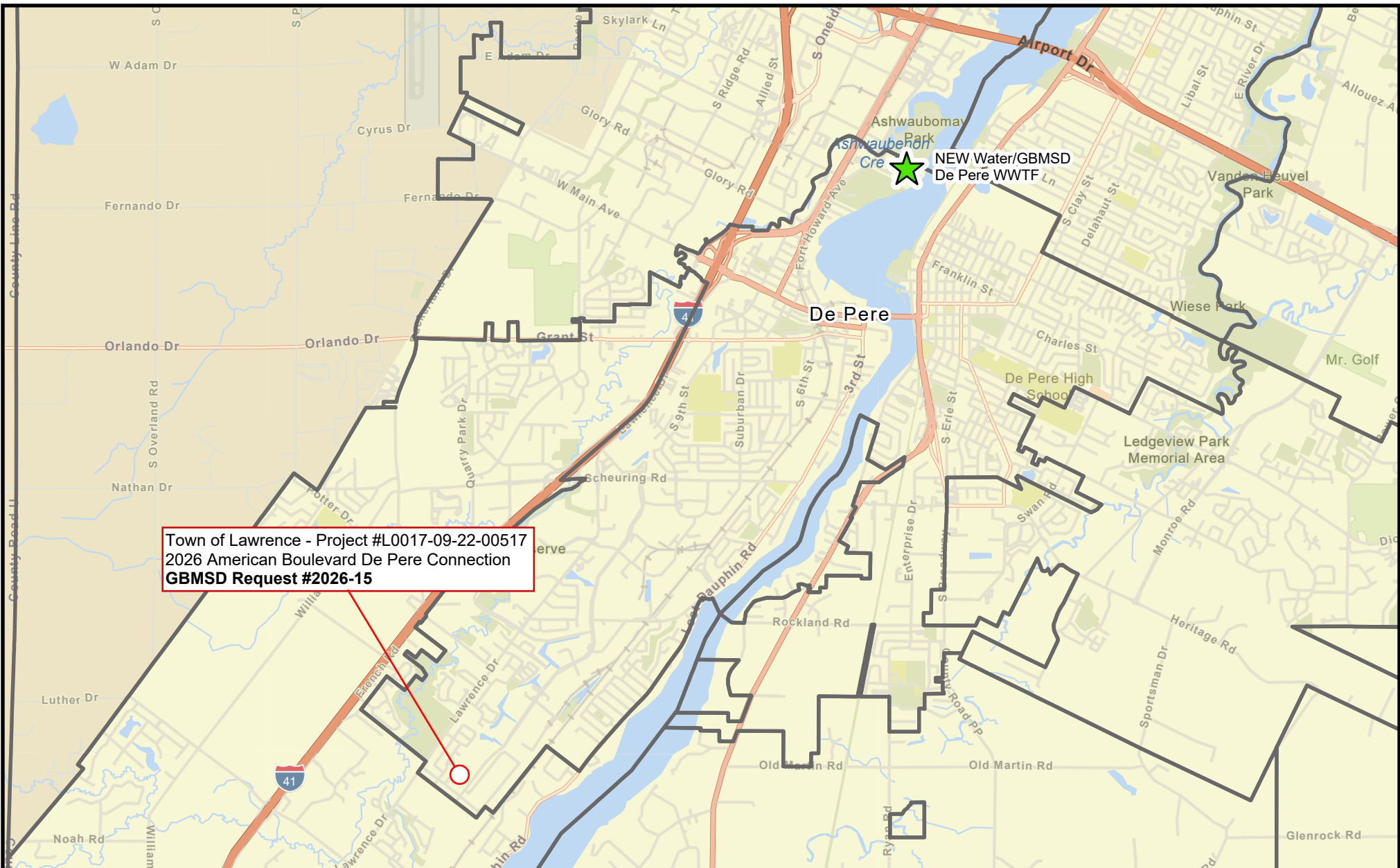


DATE _____ SIGNATURE _____

APPROVED FOR
 VILLAGE OF HOWARD

DATE REVISD

PUBLIC WORKS DIRECTOR _____
 VILLAGE ENGINEER _____

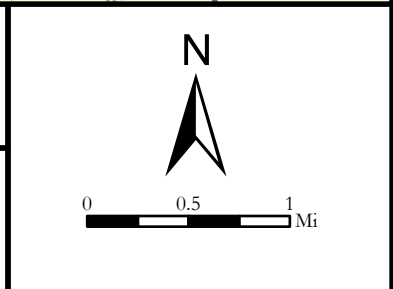


LEGEND
 [Symbol] Municipalities

NEW Water
 The brand of the Green Bay
 Metropolitan Sewerage District

April 2026

**GBMSD Sewer Plan Approval
 Request Location**



Project Updates Summary - April 2026

Ongoing Construction Projects

Schedule	Budget	Project Name	Project Driver	Status Update	Capital Costs to Date	Approved Costs Including Contingency
●	●	GBF: North Plant Clarifier Rehabilitation	Reliability / Aging Infrastructure	Work has been ongoing. Currently, 1 primary clarifiers and 2 final clarifiers have been completed, including rework of structural deficiencies. Contractor has an aggressive 2026 summer schedule. On schedule , anticipate completion in early 2027.	\$25,716,942	\$40,958,731
●	●	GBF: Thickening Improvements	Capacity Aging Infrastructure System Performance Optimization	Contractor is working on preparatory work for the installation of the new thickening equipment. One of the gravity belt thickeners is currently on site and in place, startup planned for late-April On schedule , anticipate completion in 2028.	\$9,726,795	\$27,519,011
●	●	Ninth Street Interceptor Relocation Southbridge	WisDOT Project	The remainder of the interceptor has been installed. Abandonment of the old interceptor remains. WisDOT is responsible for 90% of eligible costs. Delayed due to WisDOT work, anticipate completion in early 2026.	\$461,031	\$840,677
●	●	DPF: Influent Pumping & Headworks Project	Capacity Aging Infrastructure System Performance Optimization	Contractor has been constructing grit and scum tanks and has been preparing for equipment arrivals. On schedule , anticipate completion in late 2027	\$4,308,182	\$27,694,596
●	●	East River Interceptor Renewal	Aging Infrastructure	Rehabilitation work and abandonment work is complete. Site restoration will begin in spring - weather permitting. On schedule , anticipate completion in summer 2026	\$10,763,368	\$14,208,944
●	●	Downtown Interceptor Renewal (East Fox River and Fox River Crossing)	Aging Infrastructure	Contractor is preparing for sliplining of EFR and FRC. On schedule , potential material supply chain issues	\$3,422,617	\$19,594,276
●	●	GBF: Administration Building Air Handling Unit Replacement Project	Aging Infrastructure	All new equipment has been installed. Remaining work items are dependent on warmer weather. Delayed , anticipate completion in May 2026	\$1,854,262	\$2,071,500

Future Construction Projects

Schedule	Budget	Project Name	Project Driver	Status Update	Capital Costs to Date	Estimated Cost
●	●	GBF: Pumping & Headworks Project	Capacity Aging Infrastructure System Performance Optimization	Design is underway. Delayed , anticipate design completion in mid-2027.	\$1,067,635	\$60,000,000 - \$95,000,000
●	●	East River Lift Station & Force Main Improvements	Capacity Aging Infrastructure	Design is underway. Working on customer agreements. Delayed , anticipate design completion in mid-2026.	\$464,994	\$12,500,000
●	●	GBF: Misc. Pumping and High Strength Waste Improvements	Aging Infrastructure	Design is complete, bids have been received. On schedule	\$381,015	\$4,500,000 - \$7,000,000
●	●	GBF: Hot Oil Economizer Replacement	Aging Infrastructure	Design is underway. On schedule , anticipate design completion in late 2026.	\$67,892	\$3,500,000 - \$5,000,000
●	●	GBF: Administration Building Elevator Modernization	Aging Infrastructure	Design is underway. On schedule , anticipate design completion in mid-2026	\$0	\$360,000 - \$400,000

Planning Projects

Schedule	Budget	Project Name	Project Driver	Status Update	Costs to Date	Estimated Cost
		Southeast Service Area Facility Plan	Capacity	A request for proposals has been developed and is in review. This planning project is driven by anticipated development related to the Brown County South Bridge Connector Project.	\$0	\$100,000

Monthly Construction Progress Report

Project Name: Downtown Interceptor Renewal Project
 Project Number: 230003CO2
 Report Number: 5
 Reporting Period: January 15, 2026 to April 9, 2026
 Project Manager: Max McGuire

Contractor: Engineering & Construction Innovations (ECI)			
Contract Cost		Contract Time	
	<u>Amount</u>		<u>Date</u>
Original Contract Sum:	<u>\$16,392,987.00</u>	Original Substantial Completion:	<u>Sept 25, 2026</u>
Net Change by Change Orders:	<u>\$(447,055.00)</u>	Original Contract Completion:	<u>Oct 25, 2026</u>
Contract Sum to Date:	<u>\$15,945,932.00</u>	Revised Substantial Completion:	
Total Complete and Stored to Date:	<u>\$2,694,175.81</u>	Revised Final Completion:	
Retainage:	<u>\$269,417.58</u>	Actual Substantial Completion:	
Total Earned Less Retainage:	<u>\$2,424,758.23</u>	Contract Milestones	
Previous Payments:	<u>\$1,912,258.71</u>	Do milestones apply?	No
Balance to Finish with Retainage:	<u>\$13,251,756.19</u>	If yes, list:	

Contract Contingency

Authorized Amount: \$1,639,300 Amount Used: \$0

Work Progress

Contract Budget Spent: 12% Contract Work Completed: 17%

Work Accomplished During Reporting Period

The contractor has completed all cleaning and televising activities for the 42-inch, 48-inch, and 60-inch sewer segments. The access pit on Adams Street, which will be used for slip-lining the 42-inch and 48-inch sewers, is finished, and equipment setup is underway. Excavation has also begun for the access pit on Main Street, which will facilitate slip-lining of the 60-inch sewer.

Work Scheduled for Next Reporting Period

Equipment setup will continue at the Adams Street pit, with the full setup expected to be completed before the anticipated pipe material delivery on April 20. Once the pipe shipment arrives, the contractor plans to begin slip-lining the 42-inch interceptor segment. The contractor will continue excavation at the Main Street access pit. Approval of Change Order #1 authorized a material change for rehabilitating the 60-inch FRC Interceptor, so the contractor will verify pipe dimensions and begin procuring the necessary materials for this work.

Outstanding Issues

The slip-line pipe for this project is being manufactured in Dubai then shipped to the jobsite. The manufacturer has informed the contractor there is a potential for shipping delays stemming from the active conflicts taking place in that region of the world.

Issues Resolved

In December 2025, the contractor experienced a failure on a sewer plug, which resulted in the plug traveling downstream to the influent pump station. The retrieval efforts were unsuccessful. On the morning of February 2nd, treatment staff found the plug caught in the bar screen rake. The plug was successfully removed and returned to the contractor.



Photo 1 – Sewer Plug being recovered at the top of the bar screen rakes.

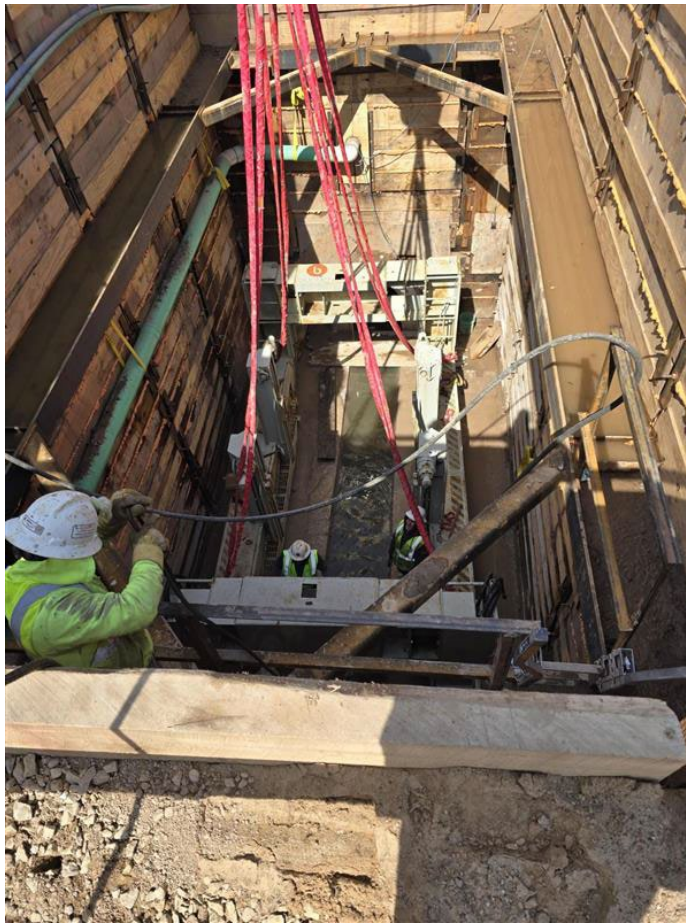


Photo 2 – Contractor setting the jacking frame for slip lining within the Adams Street access pit.



Photo 3 – Construction of the Main Street access pit.

Monthly Construction Progress Report

Project Name: GBF North Plant Clarifier Rehabilitation
 Project Number: 18-020-CO
 Report Number: 10
 Reporting Period: 11/23/25 to 4/11/26
 Project Manager: Robert Brown

Contractor: Lunda Construction			
Contract Cost		Contract Time	
	<u>Amount</u>		<u>Date</u>
Original Contract Sum:	\$ 34,314,529.00	Original Substantial Completion:	<u>10/31/26</u>
Net Change by Change Orders:	(\$ 1,395,597.93)	Original Contract Completion:	<u>2/28/27</u>
Contract Sum to Date:	\$ 32,918,931.07	Revised Substantial Completion:	<u>1/18/27</u>
Total Complete and Stored to Date:	\$ 23,984,532.59	Revised Final Completion:	<u>NA</u>
Retainage:	\$ 822,329.09		
Total Earned Less Retainage:	\$ 23,162,203.50	Contract Milestones	
Previous Payments:	\$ 23,025,281.23	Do milestones apply?	No
Balance to Finish with Retainage:	\$ 9,756,727.57	If yes, list:	

Contract Contingency

Authorized Amount: \$ 3,431,500.00 Amount Used: (\$ 1,395,597.93)

Work Progress

Contract Budget Spent: 70% Contract Work Completed: 73%

Work Accomplished During Reporting Period

Mechanical installation work on Final Clarifier (FC) #3, FC #7, and Primary Clarifier (PC) #2 progressed into December until winter conditions forced the suspension of rehabilitation efforts. The equipment vendor delivered the requested comprehensive structural analyses for primary and final clarifiers, and NEW Water accepted the proposed resolutions for all structural deficiencies. Replacement trusses and components were then manufactured and delivered throughout the winter months. Scum pumps, piping, and bases were installed for FC #3, #5, and #6, as well as the PC #2 grit pump. Outdoor work and structural/mechanical repairs for PC #2 and FC #1 resumed on March 2, with startup of the fully rehabilitated units scheduled for mid-April.

Work Scheduled for Next Reporting Period

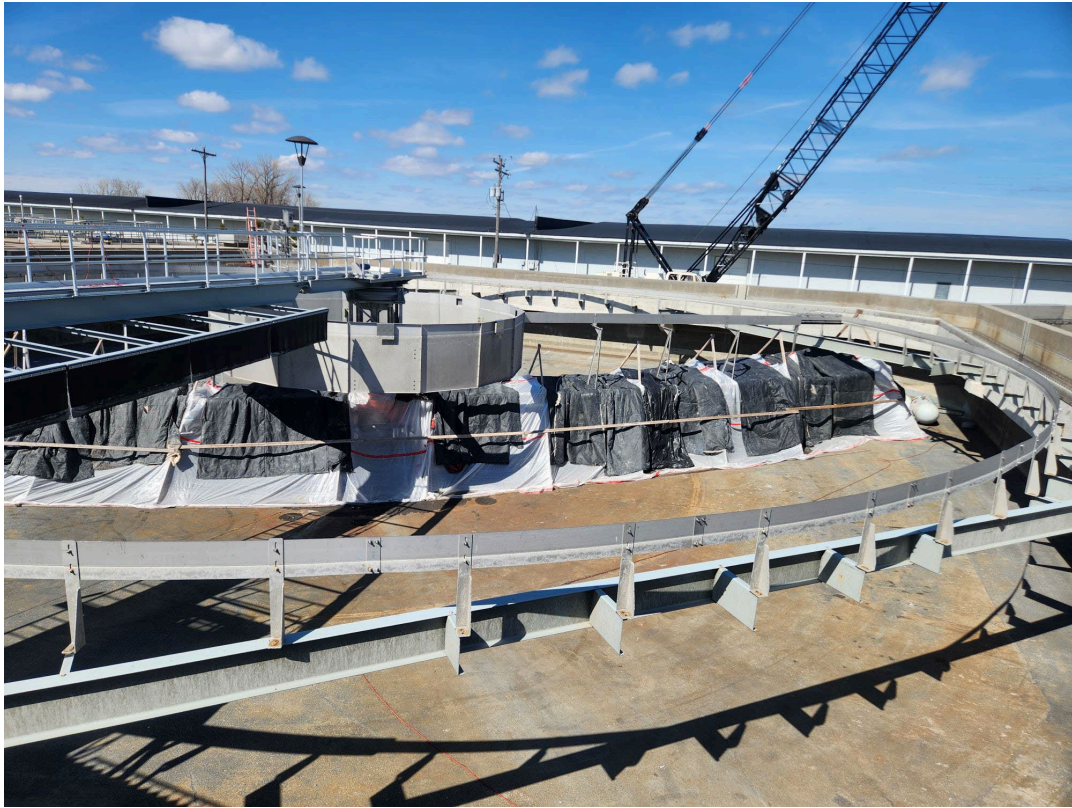
Work on FC #1, FC #7, and PC #2 will be completed and the three units will be returned to service in their final rehabilitated state. Work will begin on PC #1 and FC #2, along with any remaining pumping and support systems as manpower and Treatment priorities allow. PC #1 (followed by PC #4) appears to represent the critical path for project timing and completion.

Outstanding Issues

None

Issues Resolved

Full evaluation of the clarifier structures and mechanisms was finalized by a registered professional engineer and resulting modifications to assure reliable operation were proposed and accepted.



TENT AND HEAT AROUND TRUSS TO ALLOW TOUCH-UP PAINTING IN COLD WEATHER



NEW SCUM PUMPS AND PIPING FOR FC #3

Memorandum

TO: Commission
Nate Qualls

FROM: Patrick Wescott

DATE: April 8, 2026

SUBJECT: Green Bay Facility Administration Building Elevator Update

Background

The attached presentation provides an update on the current condition and status of the elevator at the Green Bay Facility Administration Building. The elevator is currently out of service due to a recent system failure, and staff have been evaluating the cause, impacts, and path forward. The following information is intended to provide context and outline the next steps.

Recommendation

This Commission item is informational only.

Commission Action

No Commission action required.

Attachments





GBF Administration Building Elevator Update

April 2026

Background

- Installed during the GBF Administration Building construction (mid 1970's):
 - Control upgrades in 1990's
 - ADA compliance upgrades in 2012
 - Estimated useful life of elevator mechanical components 25-40+ years
 - Electrical components useful life ~15 years
- Provides building floor access for:
 - Staff/Contractors/Visitors
 - Public meetings
 - ADA accessibility
- Maintenance and regulatory requirements:
 - Elevator systems require specialized technical expertise and are maintained under a third-party service agreement
 - Maintenance and repair activities are performed by a contracted provider
 - Complete the annual State of Wisconsin inspection and testing
 - Service provider performance is audited for compliance



Reliability and Maintenance

- Increasing reliability issues observed in 2025
- Multiple service calls and intermittent failures in late 2025. Most recently:
 - 12/15/2025: Elevator not working. Restored to service.
 - 12/20/2025: Elevator not working. Out of service.
 - 12/31/2025: Extensive troubleshooting to determine cause.
- Failure cause: critical control system component failed. Failed component is obsolete and unavailable
- Service company confirmed no replacement, and no repair options exist:
 - Second opinion sought



Organizational Impacts

- Elevator remains out of service:
 - Drive system controls obsolete
- Increased reliance on stairs
- Access limited to stairways for public meetings/visitors:
 - ADA accessibility limitations
- Financial impacts:
 - 2025 elevator service provider indicated that a critical controls component part was no longer available
 - 2026 budget includes controls upgrade (\$40,000) based upon parts no longer being available
 - Insufficient to cover overall repair costs
 - Full elevator modernization is being recommended



Preliminary Estimated Project Cost

- Preliminary estimated cost:
 - \$260,000 system modernization
 - \$75,000 carriage upgrade
 - \$25,000 consultant support
 - Total project cost estimated between \$360,000 - \$400,000
- Consultant tasks:
 - Complete condition documentation
 - Prepare plans and specifications
 - Support bidding and procurement
 - Assist with contract awarding and construction administration
 - Assemble construction as-built documentation





Project Timeline

2026:

- Engineering validation and design (in progress)
 - Development of specifications and procurement documents
- Bid process and contractor evaluation (July – Aug)
- Project award recommendation to the Commission for review and approval (July – Aug)
- Fabrication begins (fall 2026)

2027:

- Construction and modernization work begins (Feb – May)
- Elevator returned to service (May – June)



Elevator Inventory and Future Plans

- **Pump Station Elevator:**
 - Installed in the 1970's
 - Drives upgraded in the early 2000's
 - Planned for upgrade as part of the Pump Station Project (in progress)
- **Administration Building:**
 - Passenger Elevator
 - Control upgrade in the 1990's
 - ADA compliance upgrades in 2012
 - Currently under evaluation for upgrade
 - Dumbwaiter
 - Drives upgraded in the 2010's
 - Motor and controller currently being upgraded
- **Compressor Building:**
 - Installed in the 1970's
 - Drives and controller upgraded in the 1990's

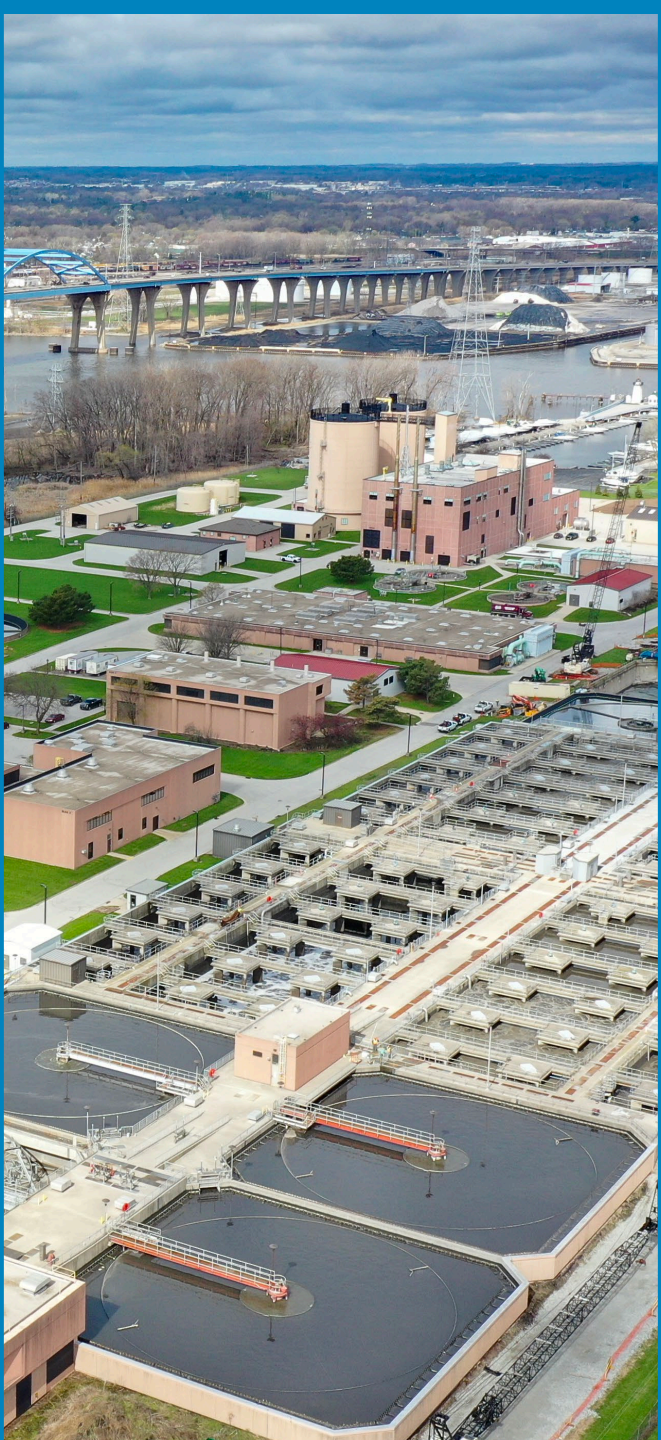


Elevator Inventory and Future Plans

- Maintenance Building Freight Elevator:
 - Installed in the 1970's
- Solids Building:
 - Passenger Elevator
 - Installed in 2018
 - Freight
 - Installed in 2018
- Staff is evaluating qualified providers to perform a system wide condition assessment and develop upgrade recommendations
 - Opportunity to better integrate building systems components into the capital improvement program beyond process related projects
 - Require third-party service reports for all maintenance activities to improve integration with NEW Water computerized maintenance management system
- Actively seeking quotes for maintenance services



Questions?



Thank You!

Stay tuned to NEW Water news

www.newwater.us



NEW Water
The brand of the Green Bay
Metropolitan Sewerage District 

Memorandum

TO: Commission
Nathan Qualls

FROM: Erin Houghton

DATE: April 9, 2026

SUBJECT: 2025 NEW Watershed Adaptive Management Program Presentation

Background

2025 was the fourth year of Adaptive Management for permit compliance under the current Wisconsin Pollutant Discharge Elimination System (WPDES) permit, starting April 1, 2022, with monthly DMR reporting and annual report requirements. The NEW Watershed Adaptive Management Program has been actively working in Ashwaubenon Creek and Dutchman Creek (ACDC), collecting information on water quality, biological conditions, and conservation concerns since 2018, with best management practices implemented as early as 2021. A presentation will provide a review of the NEW Watershed Program, trends and progress made in 2025 towards first-term goals, and Program plans for 2026.

Recommendation

This Commission item is informational only.

Commission Action

No Commission action is required.





NEW Watershed Program Updates

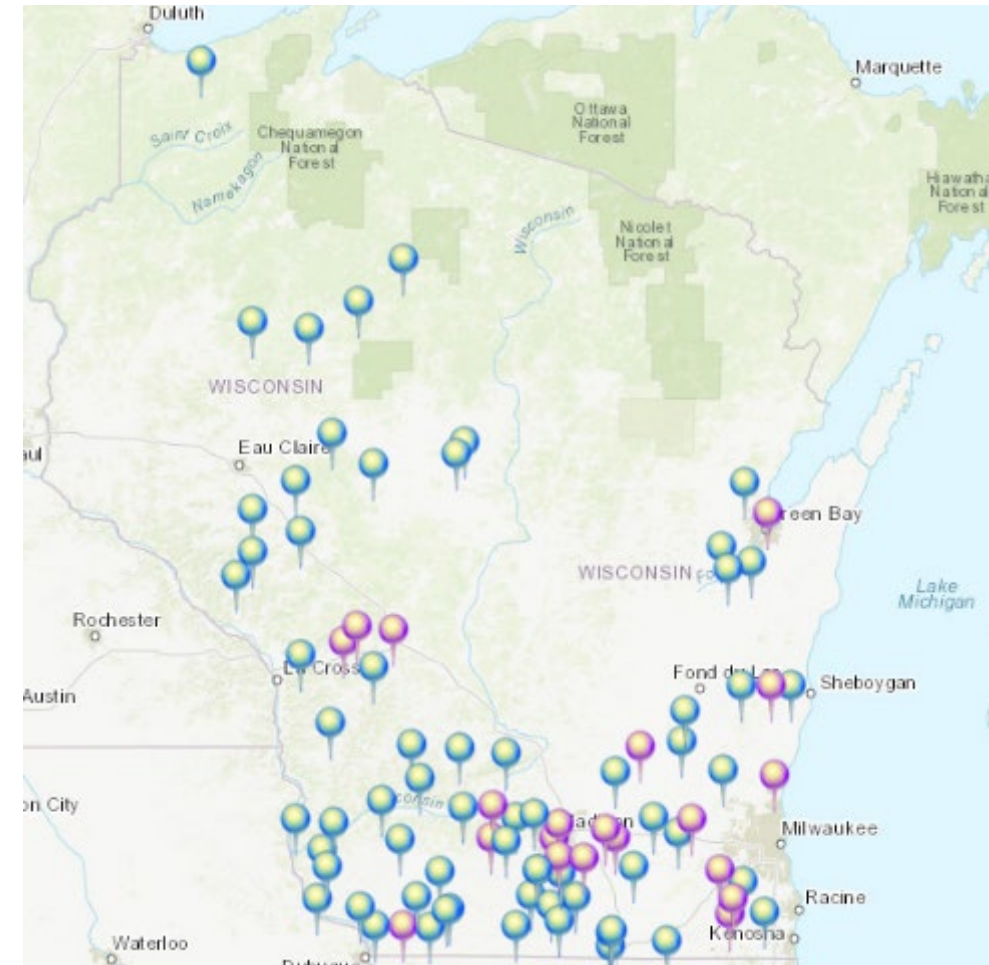
~ Adaptive Management ~

Water quality & innovative conservation at a watershed scale

Erin Houghton, MS
Watershed Programs Manager
ehoughton@newwater.us

What is Adaptive Management?

- Voluntary compliance option for point source facilities to comply with phosphorus limits in NR217
- Watershed approach to control phosphorus and total suspended solids, where a point source facility funds management measures at other point or nonpoint sources
- Creates interim limits for the point source facilities for the duration of the compliance program
- Based on achieving the applicable water quality criteria in the receiving water and/or action area
- A strategy built on partnerships between point source facilities & landowners, municipalities, private & public entities



<https://dnr.wisconsin.gov/topic/Wastewater/AdaptiveManagement.html>

<https://www.newwater.us/programs/watershed>



April 6, 2026
MODIS Image

Actively farmed Oneida Nation land



Water and Sediment Control Basins (WASCOB)
2017

Stream Re-meandering
2020

Cover Crops and No Till
2016 - current

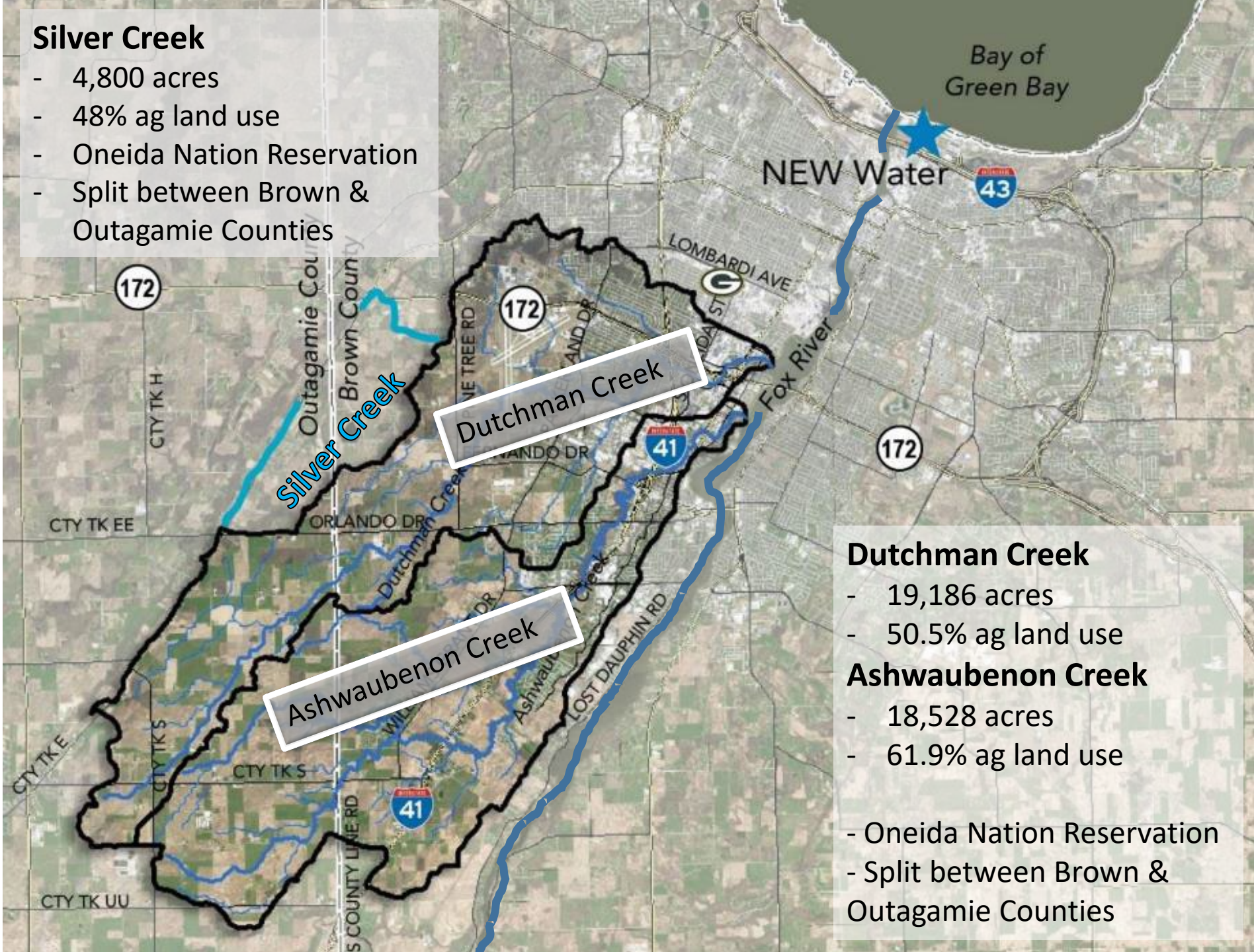
Vegetated Buffer
2017

Photo credit: Ben Young, NEW Water



Silver Creek

- 4,800 acres
- 48% ag land use
- Oneida Nation Reservation
- Split between Brown & Outagamie Counties



Dutchman Creek

Ashwaubenon Creek

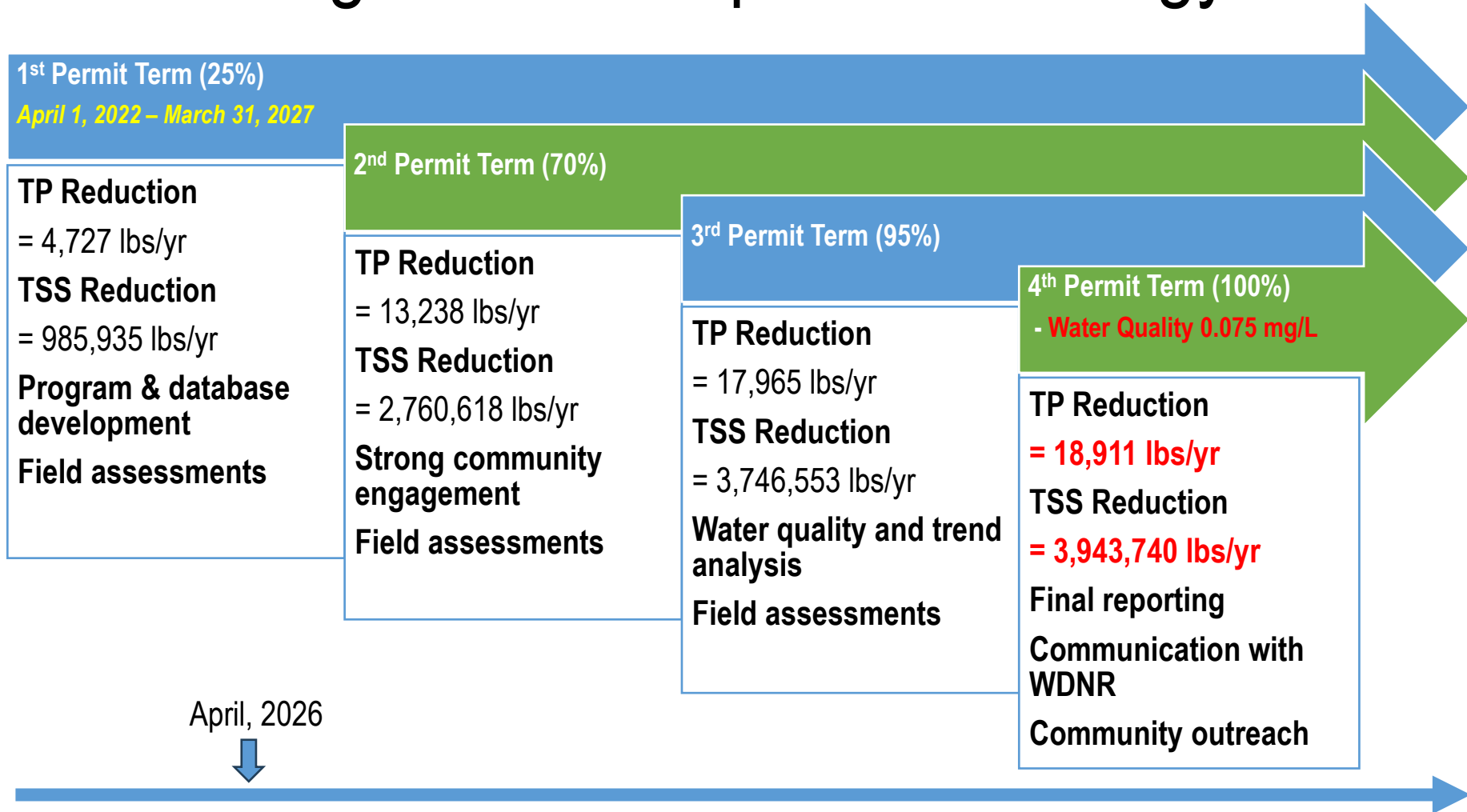
Dutchman Creek

- 19,186 acres
- 50.5% ag land use

Ashwaubenon Creek

- 18,528 acres
- 61.9% ag land use
- Oneida Nation Reservation
- Split between Brown & Outagamie Counties

NEW Water's Adaptive Management Compliance Strategy



1 permit term = 5 years
4 permit terms = min 20 years

Program Collaboration Partners = Progress

NEW Water: WPDES Permit Holder

<u>Program Management Assistance:</u>	<u>BMP Implementation:</u>	<u>Water Quality & Biological Monitoring:</u>	<u>Reporting:</u>	<u>Program Resources:</u>
<ul style="list-style-type: none">- Jacobs Engineering- Kane Communication Group- McMahon & Associates	<ul style="list-style-type: none">- Outagamie County (LCD)- Brown County (LWCD)- Oneida Nation- Ducks Unlimited- Tilth Agronomy- NRCS: EQIP & RCPP	<ul style="list-style-type: none">- UW-Green Bay- USGS- Oneida Nation	<ul style="list-style-type: none">- Outagamie County (LCD)- Jacobs Engineering- Kane Communication Group- WDNR	<ul style="list-style-type: none">- USFWS- Fox Demo Farms- FWWA- Outagamie County (LCD)- Brown County (LWCD)- Oneida Nation- UW-Madison Extn

ACDC Water Quality & Biological Monitoring

- Water Quality

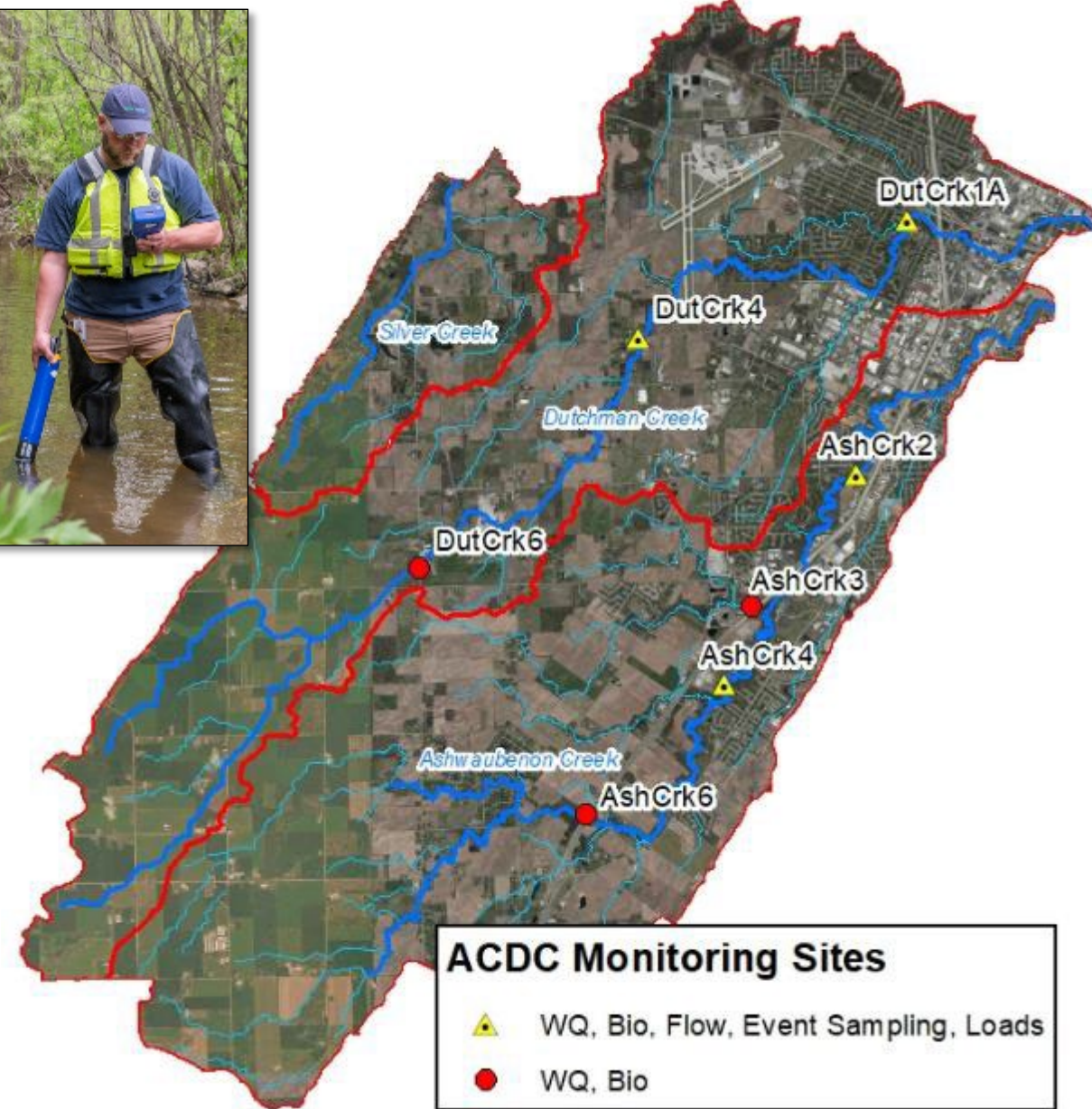
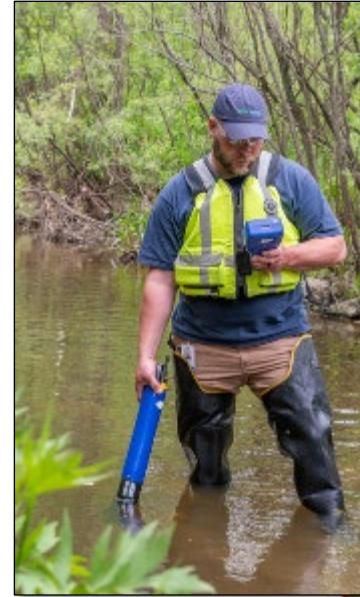
- 7 water quality monitoring sites
 - TSS, TP, dissolved TP, TKN
 - Multi parameter sonde recordings

- USGS Gage Stations

- 4 gage and event samplers
 - Installed and operational

- Biological Monitoring

- Contract with UWGB & Oneida Nation to perform annual biological sampling
 - 2018 - Current
 - 9 sites sampled: fish, inverts, habitat
 - Samples sorted out for identification and review



NEW Water's Adaptive Management Program 2025 Updates: Ashwaubenon & Dutchman Creeks

NEW Watershed Program: Rural Implementation Summary

- Operational (soft) Practices 2025: 4,651.1 acres
 - 2,154 acres Cover Crops
 - 1,439 acres residue tillage
 - 480 acres low disturbance manure injection
 - 579 acres alfalfa with grass
- Structural (hard) Practices: 184 BMPs installed
 - 55 acres buffers
 - 4.3 miles 2-stage ditches
 - 15,858 feet grassed waterway
 - 9.7 acres of critical area plantings
 - 116 acres conservation reserve plantings, grazing, and wetlands
- Fox Demo Farms - Clean Water Pledge Farms: 16



Reduction Goals	2022 - 2025	1 st Permit Term Goal
Total Phosphorus (TP)	5,023 lbs/yr	4,727 lbs/yr
Total Suspended Solids (TSS)	2,296,340 lbs/yr	985,935 lbs/yr



Project Example: Operational Practices

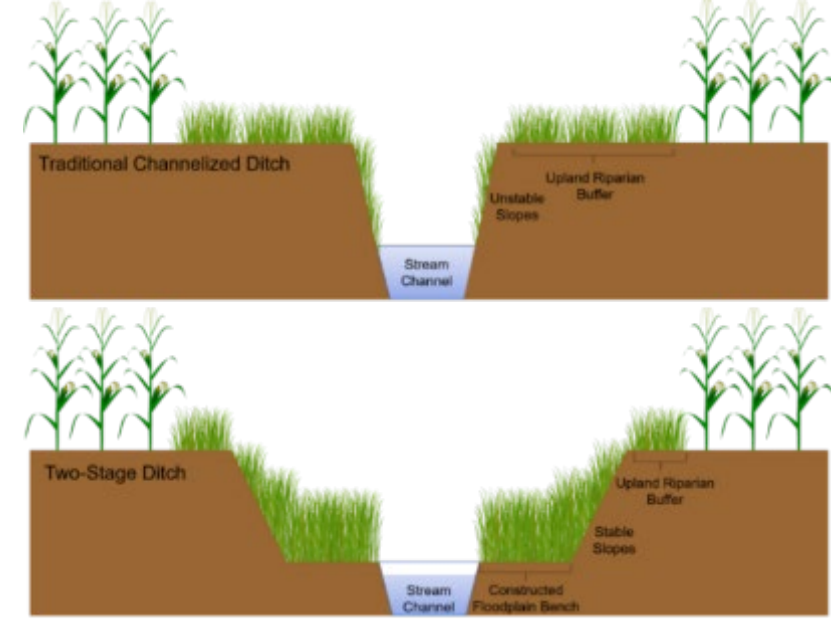
- Cover crops
- Interseeding
- Low disturbance manure injection





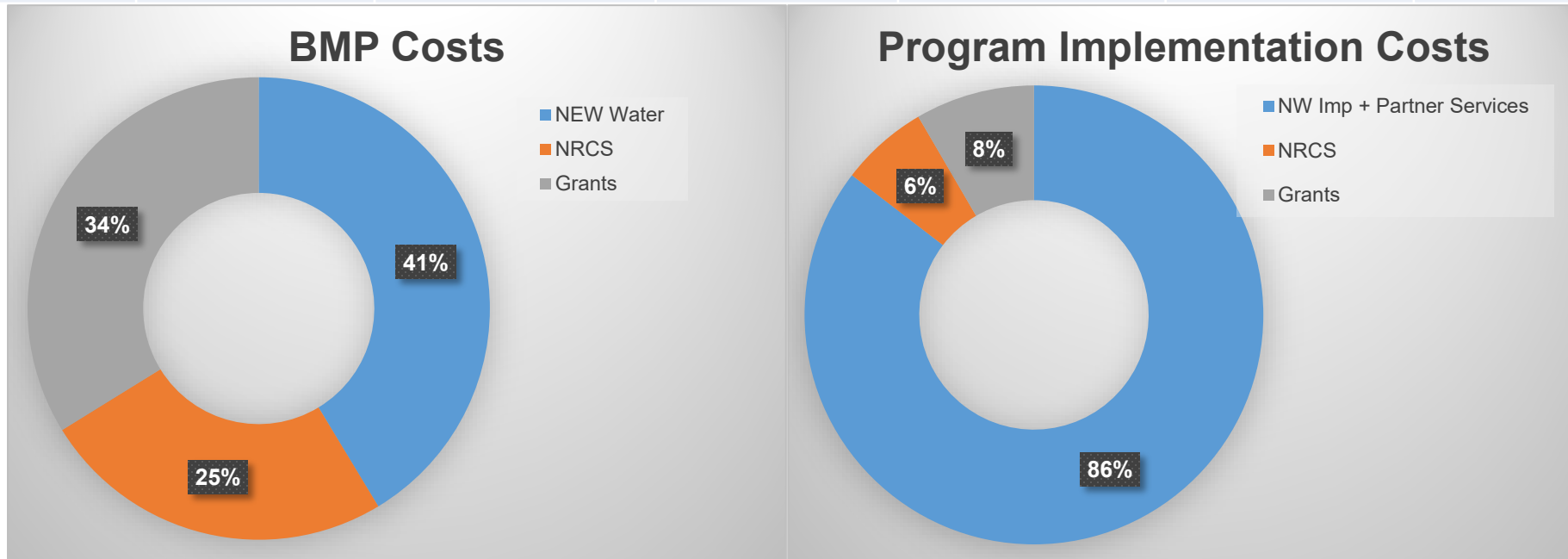
Project Example: Structural Practices

- Two-Stage ditches
 - Restoring floodplain connection
 - Added water holding capacity
- Harvestable buffers
 - Slow surface runoff
 - Filter out sediment from surface runoff



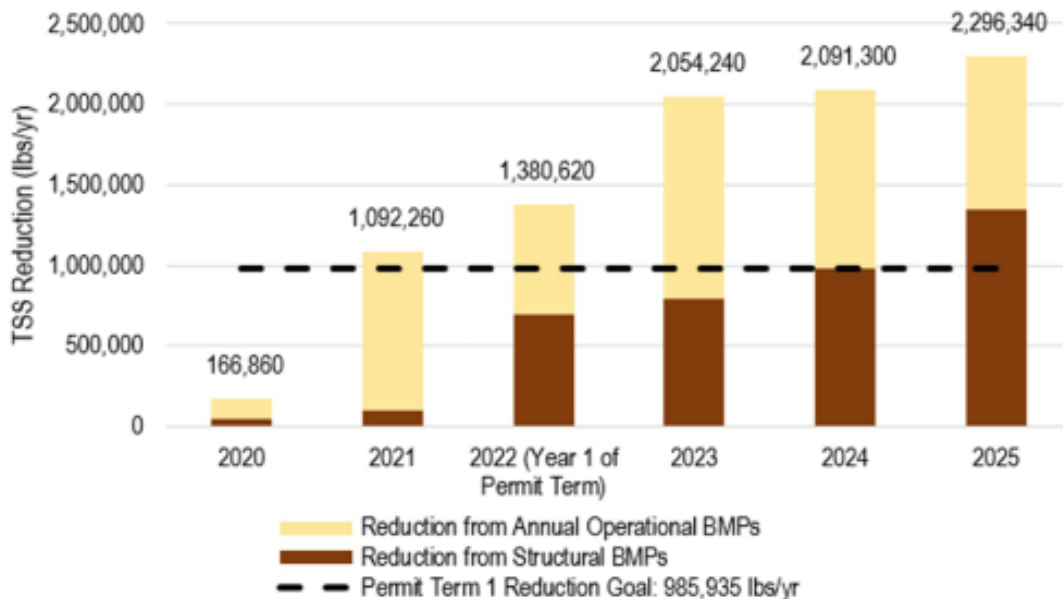
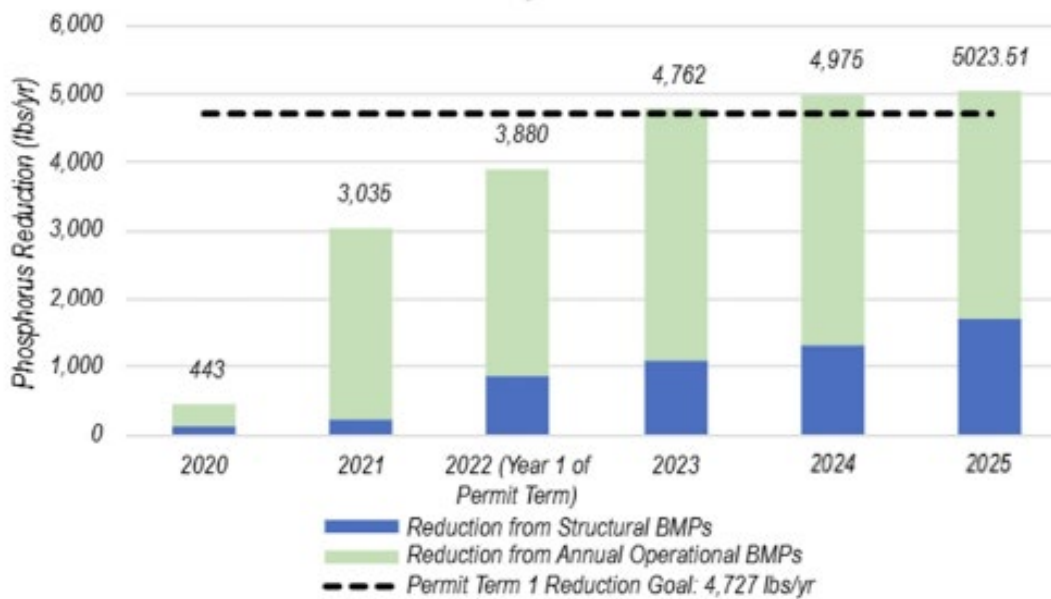
NEW Watershed Program Cost Review:

Years	NEW Water BMPs	NRCS Cost Share BMPs	Grant BMPs	Total BMP Costs	Total Program Costs	Model Estimate for AM
2020	\$40,991			\$40,991	\$1,281,191	
2021	\$127,316	\$77,359	\$41,540	\$246,215	\$1,513,297	
2022*	\$184,838	\$321,673	\$43,400	\$549,911	\$1,799,368	\$2,000,000
2023	\$181,506	\$113,996	\$193,918	\$489,420	\$1,797,934	\$2,000,000
2024	\$269,265	\$2,187	\$80,519	\$351,971	\$1,467,987	\$2,000,000
2025	\$176,797	\$83,829	\$304,938	\$565,564	\$1,837,435	\$2,000,000



NEW Watershed Program Reduction Review:

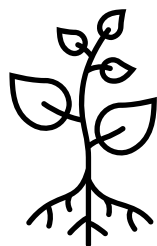
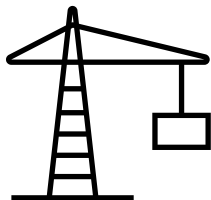
WPDES Permit Term Adaptive Management	Percent of Total Reduction	Total Phosphorus (lbs/yr)	TP Reductions - 2025	Total Suspended Solids (lbs/yr)	TSS Reductions - 2025
1: 2022-2027	25%	4,727	5,023	985,935	2,296,340
2	70%	13,238		2,760,618	
3	95%	17,965		3,746,553	
4	100%	18,911		3,943,740	



NEW Water WPDES Phosphorus Compliance:

❖ Original Cost Evaluation:

- Model tertiary treatment: \$65M
 - Assumed 3.5% escalation over time
 - Assumed 60 MGD Filtration at GBF north plant
- Model adaptive management: \$40M
 - Based on Silver Creek Pilot Project actual spend and projected costs
 - Assumed minimal grants
 - Assumed 20 yrs



❖ Current Cost Check-In:

- Tertiary treatment: Adjusted \$86M
 - 4% escalation more appropriate based on current engineering cost projection index and known costs
 - Same assumed 60 MGD Filtration at GBF north plant
- Adaptive management:
 - \$40M for 20 yrs on track
 - Currently underspending annual \$2M

NEW Water's Adaptive Management Program 2025 Updates: Ashwaubenon & Dutchman Creeks

- NEW Watershed Program: [Urban Summary](#)
 - Collaboration with Austin Straubel International Airport
 - Support their GRB Water Stewardship Program
 - Contracting for implementation of practices, 2024 - current
 - Coordination on new capture and treatment of wastewater on airport grounds
 - Collaboration and Coordination with Wisconsin Department of Transportation
 - Ongoing and future I-41 expansion & South Bridge Connector construction
 - Collaboration with Communities along the Lower Fox River and Ashwaubenon and Dutchman Creeks
 - Area of Concern projects at the mouth of Ashwaubenon Creek and mouth of Dutchman Creek
 - Planting of trees for water management with NE WI Communities
 - Meeting with municipalities to see what opportunities exist for collaboration on their urban planning strategies
 - Have signed MOU with Town of Lawrence (*April 2025*)



NEW Water's Adaptive Management Program 2025 Updates: Grant Projects

- NEW Water Community Grants
 - Harmful Algal Bloom Outreach Grant
 - Continued Partnership and Grant support for East River Collaborative (ongoing)
 - United States Forestry Service Great Lakes Restoration Initiative tree planting grant
 - Includes many NEW Water municipalities and Oneida Nation
 - WDNR Apple Creek ARTS monitoring Grant
- NEW Water Watershed Grants
 - USFWS Coastal Grant – Wetlands
 - NRDA Grant – Streambank stabilization & restoration



CAUTION

BLUE-GREEN ALGAE (CYANOBACTERIA) BLOOMS CAN PRODUCE TOXINS THAT MAKE PEOPLE AND ANIMALS SICK.

AVOID WATER THAT:

- IS DISCOLORED OR STREAKY
- LOOKS LIKE SPILLED PAINT OR PEA SOUP
- HAS FLOATING SCUM, GLOBS OR MATS

DON'T GET SICK. AVOID THE ICK.

STEER CLEAR. | RINSE OFF. | WHEN IN DOUBT, STAY OUT.

If you or your pets have sudden illness or signs of poisoning following exposure, please call your doctor or veterinarian, or the Wisconsin Poison Center at 800-222-1222.

See the caution information in Spanish at www.avoidtheick.org
See the caution information in Hmong at www.avoidtheick.org
See the caution information in Somali at www.avoidtheick.org

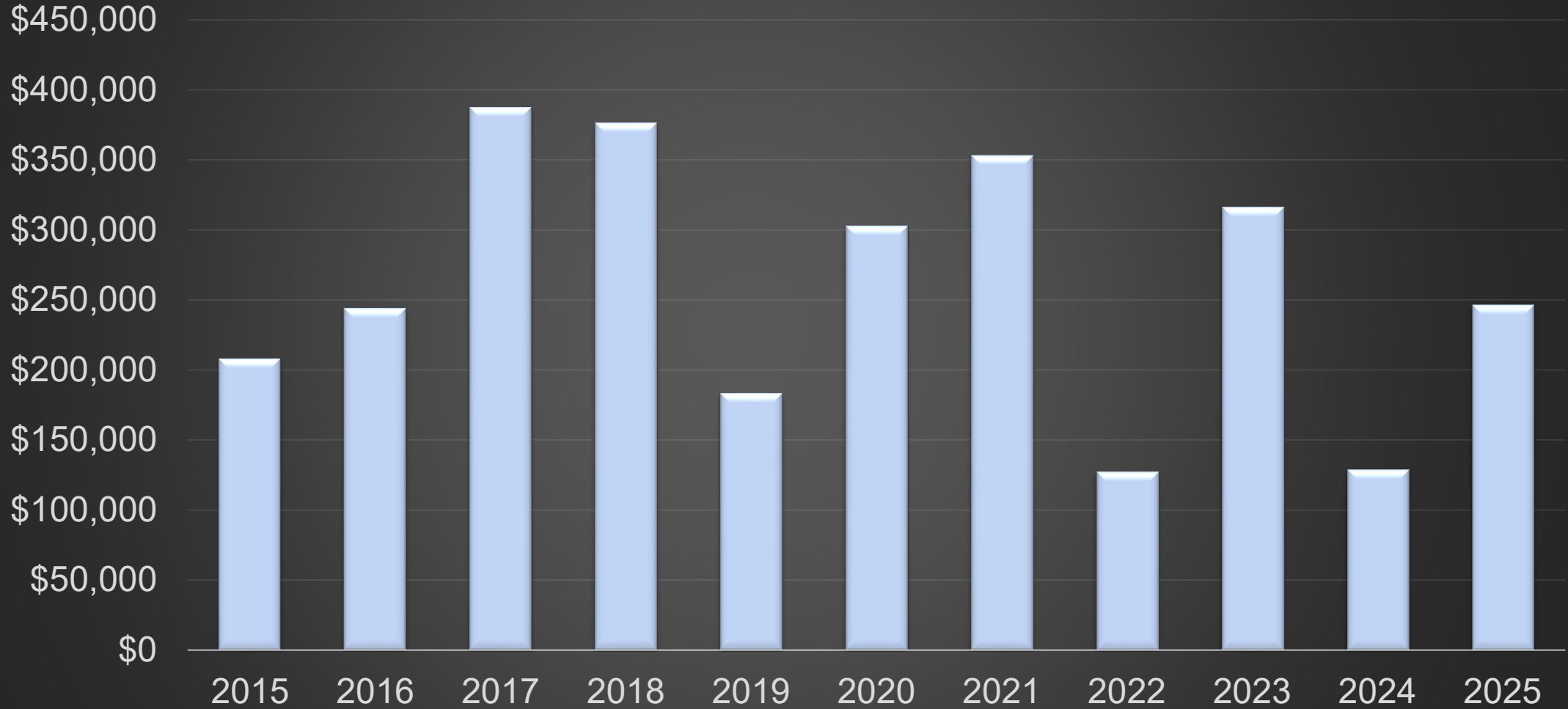
This public health campaign is funded by the Wisconsin Coastal Management Program and the National Oceanic and Atmospheric Administration, Office for Coastal Management under the Coastal Zone Management Act, Grant # NA24NOsX49C0005.



AVOIDTHEICK.ORG

NEW Water Grant Funding Received:

Grant Funding by Year



Next Steps in NEW Watershed Program

- Continue partnerships, Program development & execution
- Water quality, flow, and biological monitoring 2018- ongoing
- WPDES Permit Renewal:
 - Renewal application & updated adaptive management plan (*end of September 2026*)
 - Permit term 1 report on adaptive management program (*end of November 2026*)
 - Year 5 annual report (*end of March 2027*)
- Together build & protect healthy watersheds for healthy waterways and communities

Teamwork Makes the Dream Work!

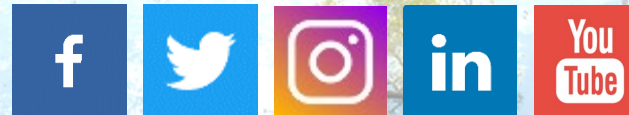
Thank You (yawn'kó)!



Questions / Comments?

Thank You!

Stay tuned to NEW Water news



Thank you to NEW Water Lab and Watershed Department staff, Outagamie & Brown County LCD Staff, Oneida Nation staff, Jacobs consulting staff, landowners & operators, and many others for ongoing support executing this Program.

#LoveYourWatershed



Plant a tree or garden



Pick up yard waste



Clear & adopt a storm drain

newwater.us/LoveYourWatershed





Practice Funding Strategy



- Structural Practices:
- 100% Structural practice cost:
 - Natural Resources Conservation Service (NRCS) Cost Share
 - Environmental Quality Incentives Program (EQIP) Cost Share
 - EQIP Regional Conservation Partnership Program (RCP)
 - NEW Water Cost Share
- Signed Cost Share Agreement (CSA)
 - CSA with landowner
 - For private landowners, practice tied to deed
 - Have specific operation and maintenance documents to accompany practice
- Operational Practices:
- NEW Water Cost Share:
 - Pay for Performance Program
 - NRCS EQIP
- Signed Cost Share Agreement
 - CSA with landowner or operator
 - Have specific operation and maintenance documents to accompany practice

2026 Practices

- 2-stage ditches
- Stream restorations
- 2 farmable water and sediment control basins
- Grassed waterways and crossings
- Filter strips
- Wetland restoration
- Critical area plantings
- Conservation reserve planting



****Incentive payments for harvestable Filter Strips are always available!***

Memorandum

TO: Commission
Nathan Qualls
FROM: Ben Young

DATE: April 9, 2026

SUBJECT: 2025 Watershed Monitoring Program Presentation

Background

2025 concluded another successful year for the Watershed Monitoring Program (WMP) in Silver, Ashwaubenon, and Dutchman Creek(s). A brief presentation will be given highlighting up-to-date water quality results throughout these watersheds.

Recommendation

This Commission item is informational only.

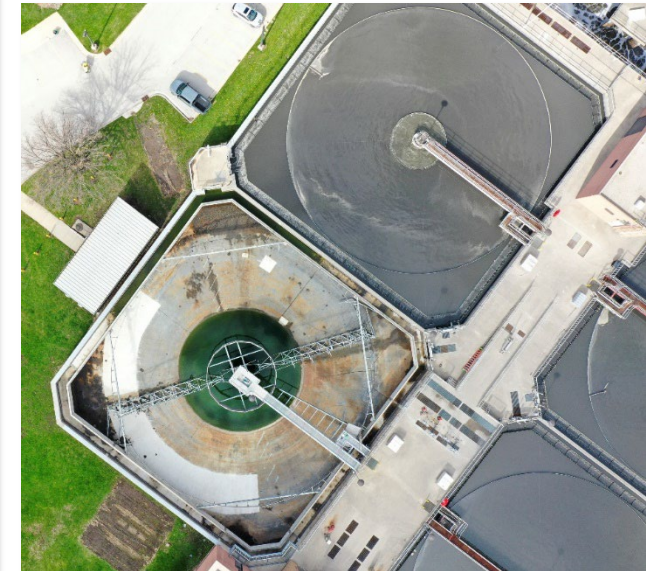
Commission Action

No Commission action is required.

2025 Watershed Monitoring Program (WMP) Year in Review

Ben Young
Watershed Specialist

2026 April Commission Meeting
04/22/26



Working to Improve the Watershed

- Excessive nutrient & sediment loadings have led to significant water quality issues
- New state regulations further reduce NEW Water's phosphorus loadings
- Needed to think of most cost effective and environmentally beneficial way to meet future permit compliance
- Tested feasibility of watershed conservation in Silver Creek Pilot Project, began 2013



Silver Creek Pilot Project



- Final report submitted to WDNR 2022
- Ongoing water quality and biological monitoring
- 2026 will be 13th year monitoring flow, water quality and biology
 - Maintaining installed BMPs
- Continued partnership with Oneida Nation
- Leveraging lessons learned in pilot project for full scale Adaptive Management



NEW Water launches **adaptive management** program to improve the region's water quality

October 20, 2021



(Green Bay, WI) Improving impaired waterways of Green Bay through a regional approach is the goal of a new, large-scale water quality improvement program publicly launched today by NEW Water, the brand of the Green Bay Metropolitan Sewerage District.

The NEW Watershed Program in **Ashwaubenon Creek and Dutchman Creek** is a long-term adaptive management strategy to address area water quality concerns while providing a cost-effective, alternative compliance option for NEW Water's

Silver Creek Project
Partnering for Water Quality

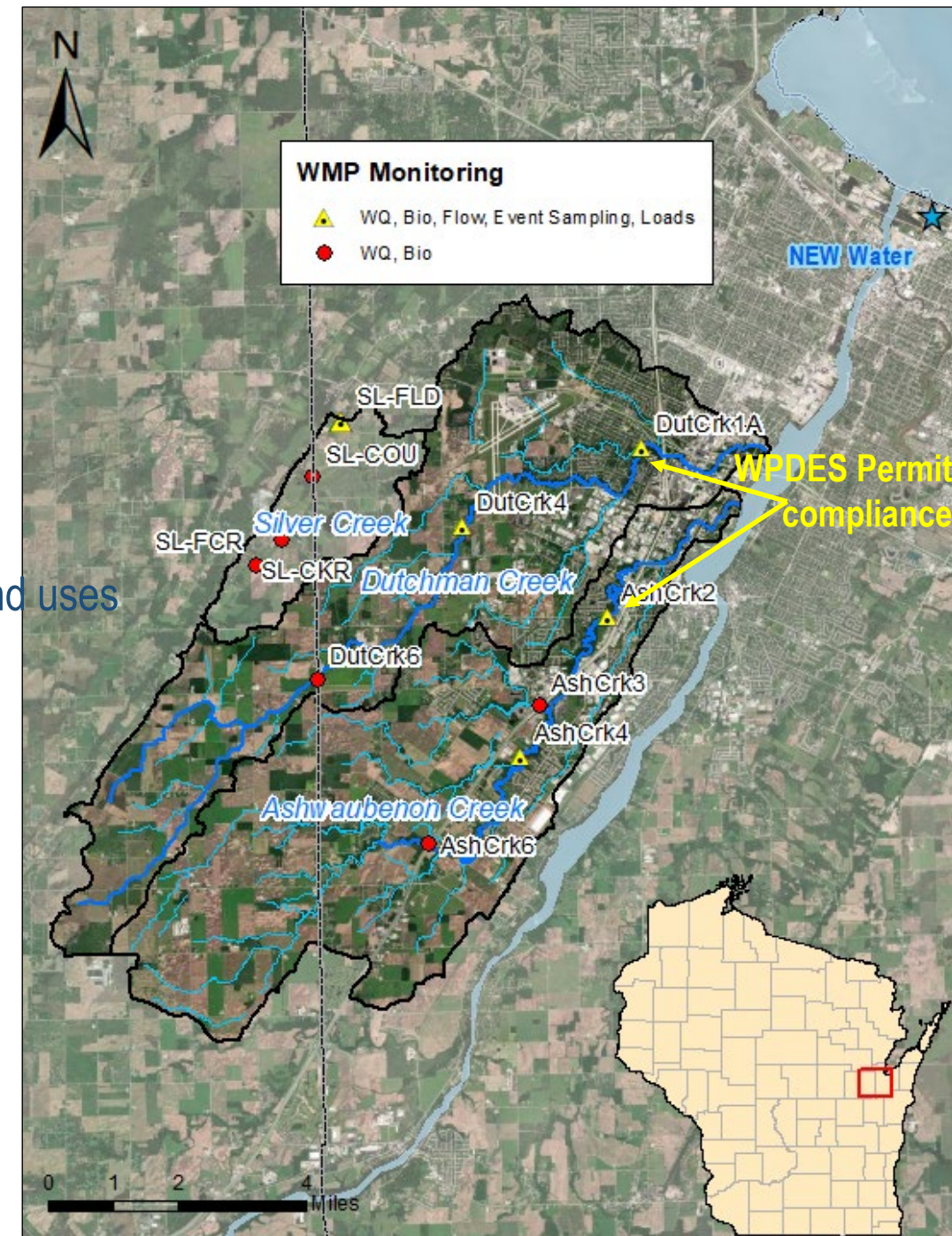


NEW Watershed Program
Partnering for Water Quality

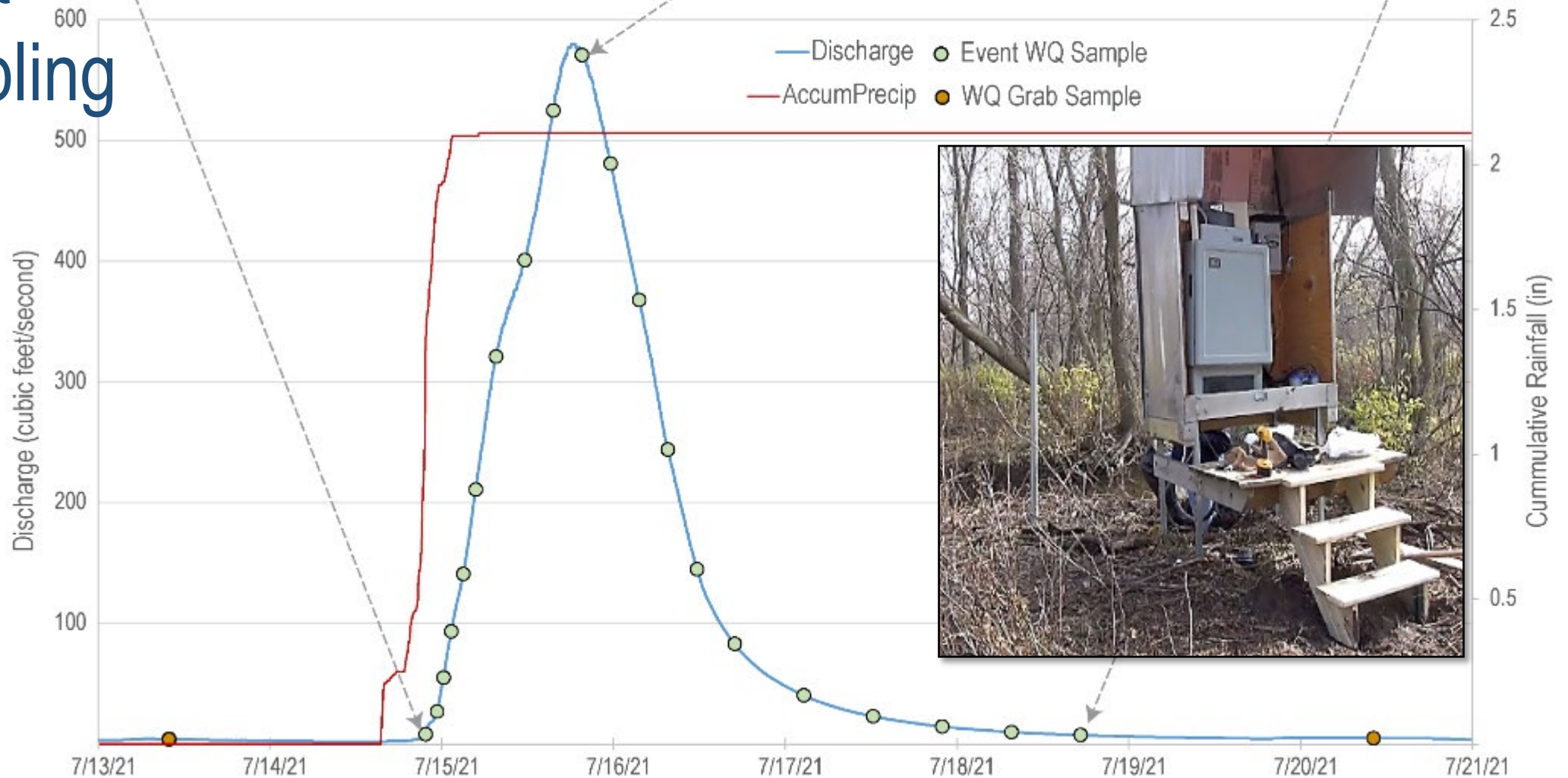
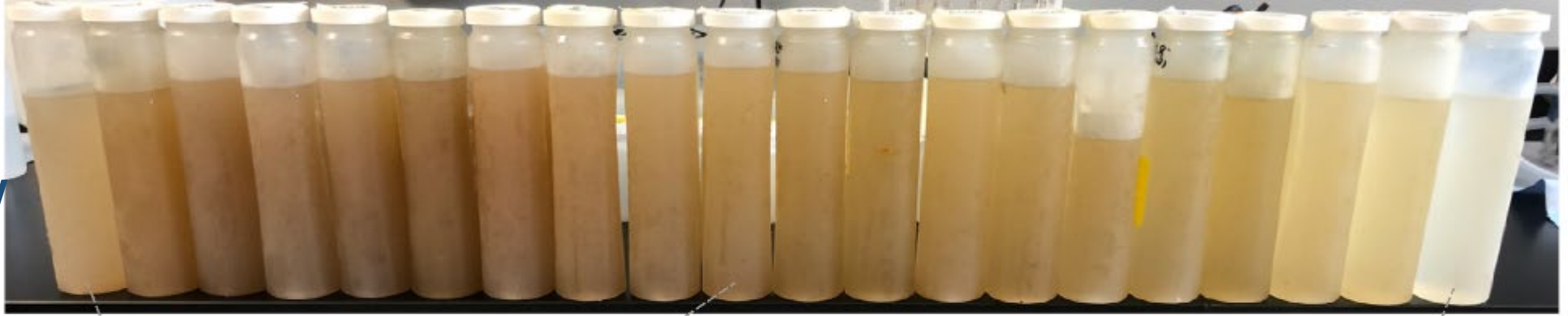
- Voluntary compliance option for point source facilities to comply with phosphorus limits in NR217
- Watershed approach to control phosphorus and total suspended solids, where a point source facility funds management measures at other point or nonpoint sources
- Based on achieving the applicable water quality criteria in the receiving water and/or action area
- A strategy built on partnerships between point source facilities & landowners, municipalities, private & public entities

ACDC Monitoring

- Water Quality
 - Weekly grab samples ice off to ice on, 2018 to present
 - 7 water quality monitoring sites
 - TSS, TP, dissolved TP, Nitrogen family, chlorides
 - Multi parameter sonde recordings
- USGS Streamgauge Stations
 - 4 flow and event samplers (loads)
 - 2 in each sub-watershed characterizing different land uses
- Biological Monitoring
 - Fish, invertebrates and habitat



Water Quality Event Sampling



2025 Watershed Sampling

2025 driest year in 20 years

2025 field sampling season

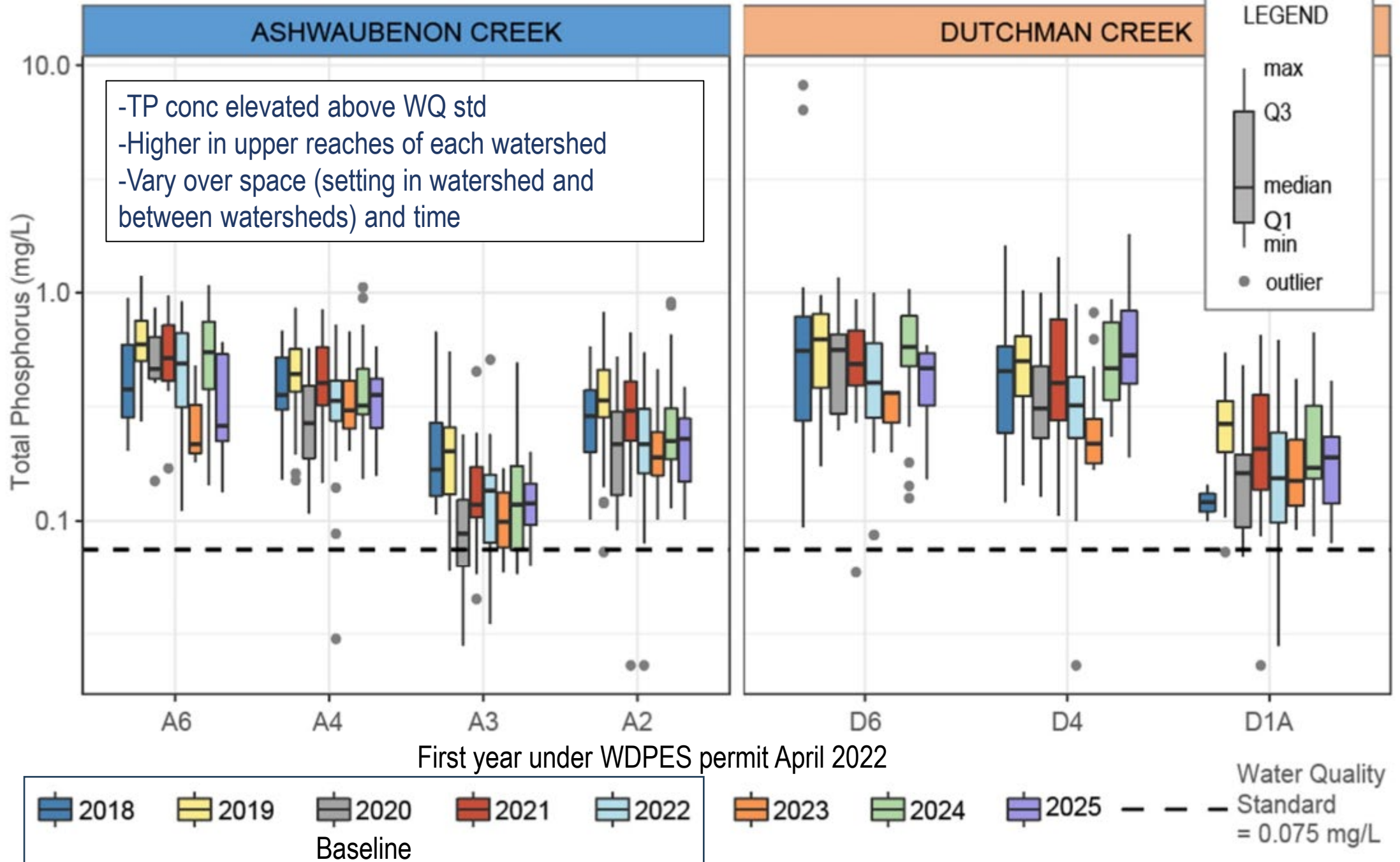
- March 10 to Nov 18, 2025
- 28 individual sampling trips
- Over 1,700 analytes processed

Silver Creek													
Site	2013-2014	2015	2016	2017	2018	2019	2020	2021	2022	2023	2024	2025	Total
SL-FCR	12	19	29	26	24	17	1	8	6	3	7	6	158
SL-CKR	19	25	29	26	24	20	2	6	7	4	9	7	178
SL-COU	21	25	29	26	26	24	14	24	22	11	30	28	280
SL-EVT	109	56	84	75	107	149	50	60	76	39	48	22	875
SL-FLD grab	44	47	47	48	46	45	36	44	33	26	41	39	496
SL-172	20	25	29	26	26	24	---	---	---	---	---	---	150
Total	225	197	247	227	253	279	103	142	144	83	135	102	2137
Ashwaubenon and Dutchman Creeks													
AshCreek6	---	---	---	---	19	25	8	18	20	6	22	12	130
AshCreek4	---	---	---	---	16	38	28	33	33	23	40	25	236
AshCreek4 event	---	---	---	---	---	---	---	---	85	59	65	28	237
AshCreek3	---	---	---	---	19	24	14	24	21	12	29	25	168
AshCreek2	---	---	---	---	21	38	28	37	33	30	42	39	268
AshCreek2 event	---	---	---	---	---	147	63	70	91	56	67	32	526
DutCreek6	---	---	---	---	19	25	9	24	22	6	27	13	145
DutCreek4	---	---	---	---	21	38	28	35	33	24	41	37	257
DutCreek4 event	---	---	---	---	---	---	---	---	65	31	44	30	170
DutCreek1A	---	---	---	---	4	38	28	37	33	30	42	39	251
DutCreek 1A event	---	---	---	---	---	126	60	68	89	42	39	37	461
Total	---	---	---	---	119	499	266	346	525	319	458	317	2849

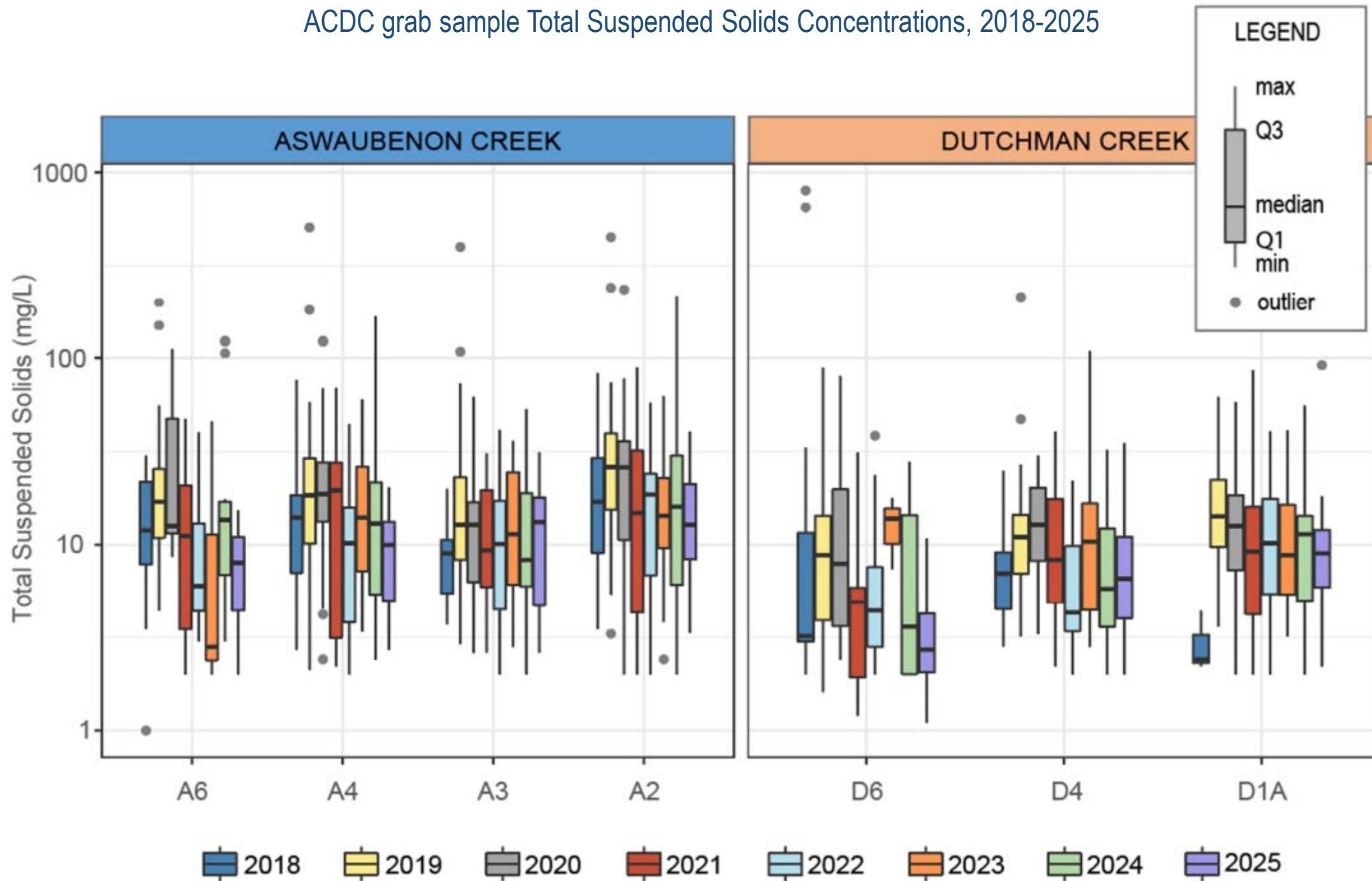


THANK YOU LAB STAFF
FOR ALL YOUR HARD
WORK AND COOPERATION!

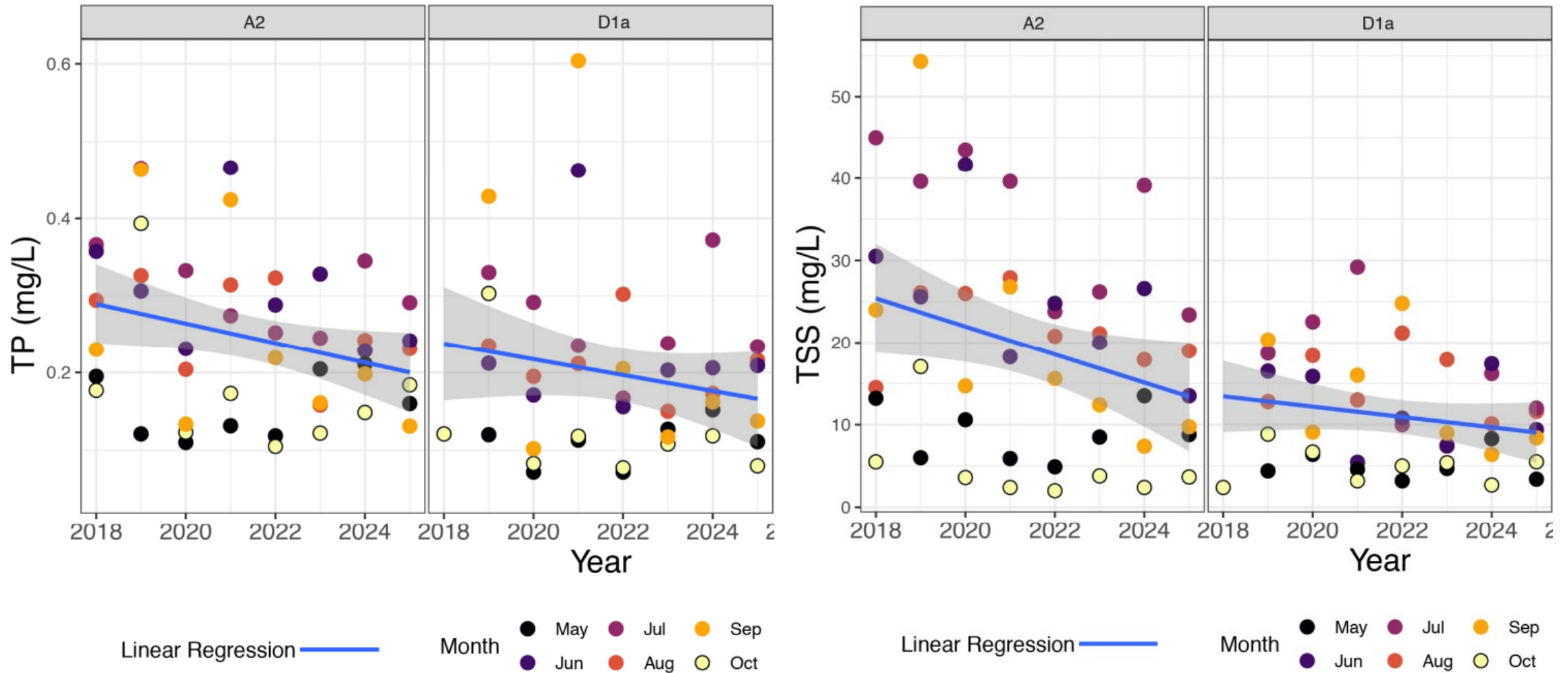
ACDC grab sample Total Phosphorus Concentrations, 2018-2025



ACDC grab sample Total Suspended Solids Concentrations, 2018-2025

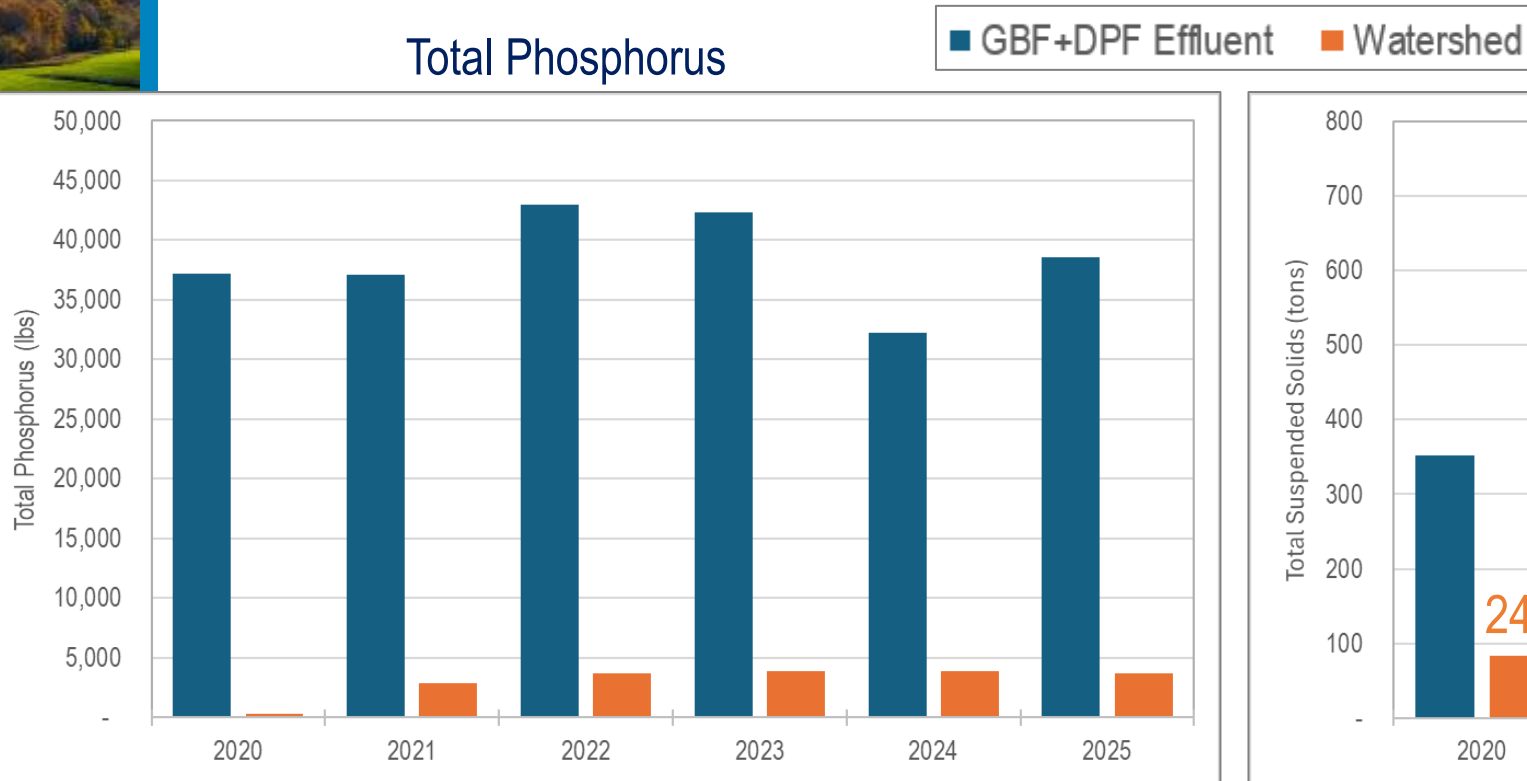


Monthly median TP and TSS Concentrations at WPDES permit compliance sites

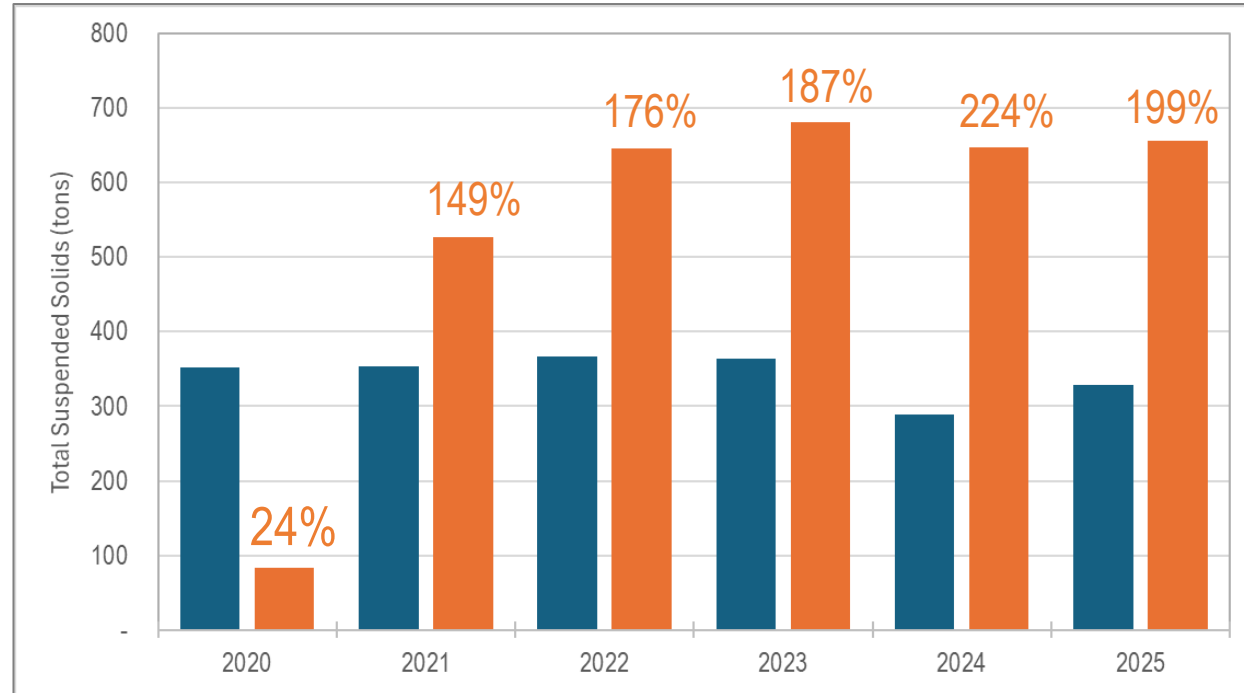


Wastewater Effluent vs. Watershed Reductions

Total Phosphorus



Total Suspended Solids



- Watershed TP reductions offset 8-12% of the Total P discharged at both GBF & DPF facilities
- Combined watershed TP reductions are similar to DPF effluent amounts

Watershed reductions as % of combined effluent

2026 thus far...



- Above normal (7.14" as of 04/14) rainfall and snowmelt leading to localized prolonged flooding
- NOAA 3 month outlook gives equal chances of being above/below normal for temperature and precipitation
- Sampling started March 9. 5 WQ sampling trips thus far
- 2026 will be 9th full year monitoring flow, water quality and biology in ACDC
- March-submitted 4th annual report to WDNR
- AM plan re-issue due Oct 2026, efforts ongoing
- 1st 5 year permit comprehensive report due Nov 2026, efforts ongoing



Thank you to all that helped make the 2025 field season a success!



Environmental Programs

- Erin Houghton
- Sarah Bartlett
- Gabe Nelson (intern)
- Erik Hepp
- Josie Stenzel
- Jeff Smudde

Questions?

Ben Young
Watershed Specialist
(920) 438-1092
byoung@newwater.us

Memorandum

TO: Commission
Nathan Qualls

FROM: Courtney Mueller

DATE: April 14, 2026

SUBJECT: 2026 March Financial Statements

Please find attached the Financial Statements for your review.

Operating Revenues

- March's operating revenues were favorable to budget by \$262K or 6%
 - Additional Biochemical Oxygen Demand (BOD) Loadings, Total Suspended Solids (TSS) Loadings, and Total Kjeldahl Nitrogen (TKN) Loadings
- Year to date, total operating revenues were favorable to budget by \$258K or 2%

Operating Expenses

- March's operating expenses were favorable to budget by \$347K or 14% from less expenditures than budgeted in plant maintenance, contracted services, and employee development.
- Year to date, total operating expenses were favorable to budget by \$790K or 11% from less expenditures than budgeted in contracted services, plant maintenance, and salaries & benefits.

Net Income (Loss) (Operating Income adjusted by Non-Operating Revenue and Expenses)

- Net Income for the month of March was \$1.5M.
- Net Income year to date was \$3.4M

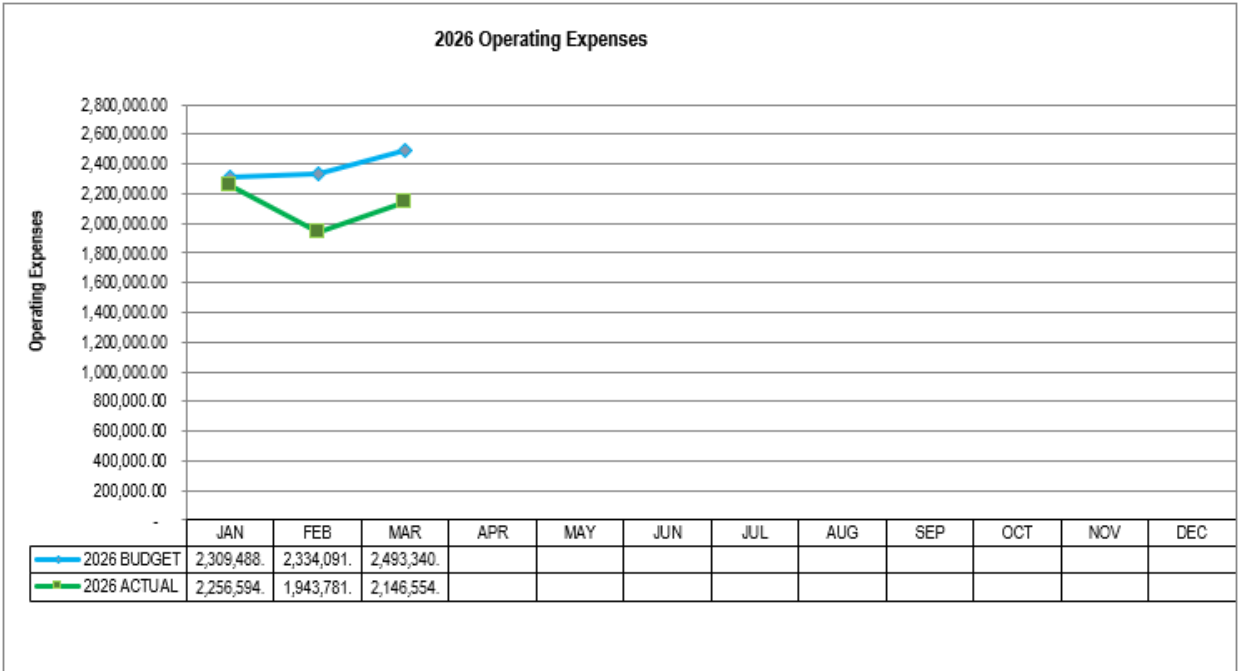
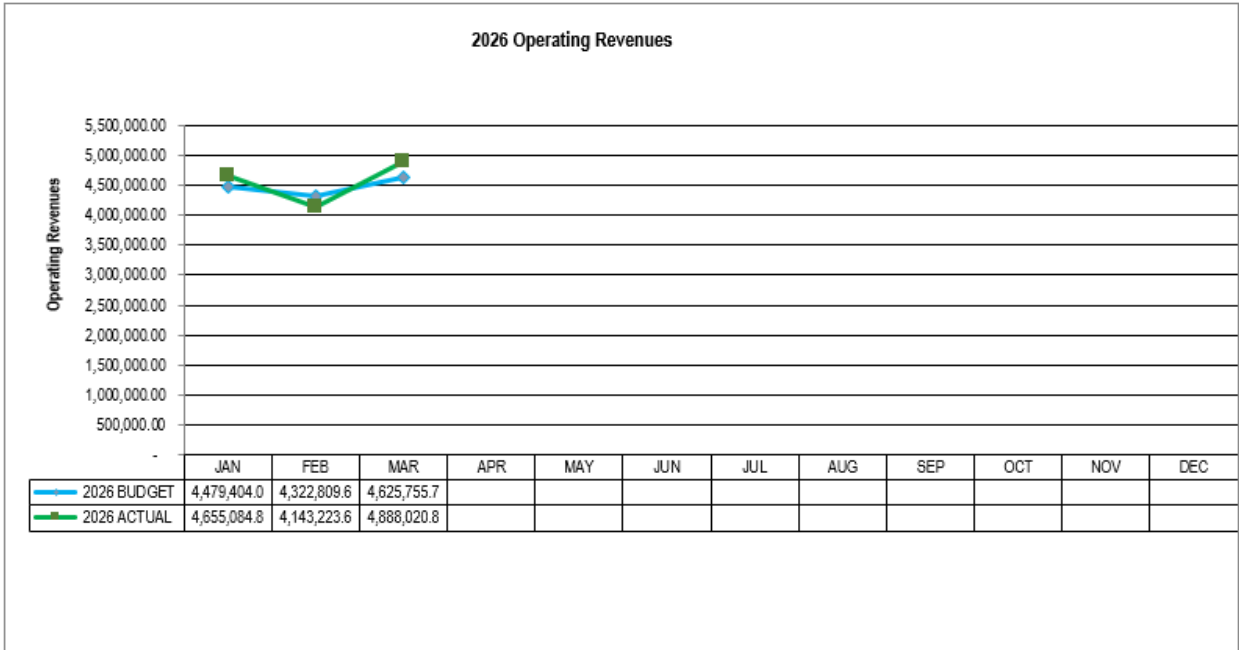
Reporting and Information

Following are the Operating Revenues and Expenses graphs; Income Statement, Statements of Net Position, and Legends are attached.

No Commission action is required



NEW Water



NEW Water
Green Bay Metropolitan Sewerage District
INCOME STATEMENT

	Mar-26			Year to Date			Actual 2025
	Budget 2026	Actual 2026	Budget vs. Actual Favorable/ (Unfavorable)	Budget 2026	Actual 2026	Budget vs. Actual Favorable/ (Unfavorable)	
Operating Revenues							
User Fees - Municipal Waste	\$ 4,265,767	\$ 4,480,269	\$ 214,502	\$ 12,269,804	12,505,305	\$ 235,501	\$11,507,154
User Fees - Mill Waste	255,020	263,467	8,447	\$ 765,059	\$ 736,598	(28,460)	676,448
Other Revenues	104,970	144,285	39,316	\$ 393,107	\$ 444,426	51,319	\$423,958
Total Operating Revenues	\$ 4,625,756	\$ 4,888,021	\$ 262,265	\$ 13,427,969	\$ 13,686,329	\$ 258,360	\$ 12,607,560
			6%			2%	
Operating Expenses							
Salaries	\$ 874,149	\$ 905,912	\$ (31,763)	\$ 2,569,491	\$ 2,565,101	\$ 4,389	\$ 2,393,554
Benefits	283,767	254,463	29,304	\$ 867,461	\$ 815,083	52,378	760,151
Employee Development	38,980	3,455	35,525	\$ 78,443	\$ 30,918	47,525	42,564
Travel and Meetings	11,070	12,188	(1,118)	\$ 25,175	\$ 23,940	1,235	21,290
Power	195,638	198,365	(2,727)	\$ 588,108	\$ 579,582	8,526	543,252
Natural Gas & Fuel Oil	91,539	76,432	15,107	\$ 295,296	\$ 326,511	(31,214)	266,321
Chemicals	49,016	104,594	(55,578)	\$ 227,821	\$ 230,695	(2,875)	300,512
Maintenance - Plant	291,136	135,696	155,440	\$ 791,254	\$ 494,702	296,552	482,706
Maintenance - Interceptors	34,893	25,151	9,742	\$ 51,929	\$ 46,199	5,729	47,644
Contracted Services	367,079	221,415	145,664	\$ 1,016,698	\$ 692,759	323,939	709,000
Insurance	48,817	47,807	1,010	\$ 146,450	\$ 144,204	2,247	139,170
Solid Waste Disposal	4,978	5,473	(495)	\$ 14,489	\$ 14,849	(360)	47,308
Administrative and Information Technology	98,574	72,614	25,961	\$ 275,163	\$ 237,403	37,760	267,702
Supplementary Expenses (See Legend)	103,705	82,989	20,716	\$ 189,144	\$ 144,984	44,159	166,566
Total Operating Expenses	\$ 2,493,341	\$ 2,146,554	\$ 346,787	\$ 7,136,920	\$ 6,346,930	\$ 789,990	\$ 6,187,740
			14%			11%	
Operating Income	\$ 2,132,415	\$ 2,741,467	\$ 609,052	\$ 6,291,049	\$ 7,339,399	\$ 1,048,350	\$ 6,419,820
			29%			17%	
Non-Operating Revenues and Expenses							
Investment Income	\$ 190,000	\$ 353,538	\$ 163,538	\$ 570,000	\$ 775,973	\$ 205,973	\$ 864,991
Unrealized Gain/Loss on Investment	\$ -	\$ -	\$ -	\$ -	\$ -	\$ -	-
Amortization of Premium	\$ -	\$ -	\$ -	\$ -	\$ -	\$ -	-
Depreciation	\$ (1,195,675)	\$ (1,195,675)	\$ -	\$ (3,587,025)	\$ (3,587,025)	\$ -	(3,395,493)
Gain (Loss) on Disposal of Fixed Assets	\$ -	\$ -	\$ -	\$ -	\$ -	\$ -	-
Interest Expense	\$ (385,500)	\$ (383,468)	\$ 2,032	\$ (1,156,500)	\$ (1,138,691)	\$ 17,809	(879,883)
Misc Non-Operating Expenses	\$ -	\$ -	\$ -	\$ -	\$ -	\$ -	-
Total Non-Operating Revenues and Expenses	\$ (1,391,175)	\$ (1,225,605)	\$ 165,570	\$ (4,173,525)	\$ (3,949,743)	\$ 223,782	\$ (3,410,385)
Net Income (Loss)	\$ 741,240	\$ 1,515,862	\$ 774,622	\$ 2,117,524	\$ 3,389,656	\$ 1,272,132	\$ 3,009,435

Note: Please reference attached legends by categories.

NEW Water

Green Bay Metropolitan Sewerage District

Income Statement Legends per Categories

Operating Revenues:

User Fees - Municipal Waste:	Volume, Biochemical Oxygen Demand, Suspended Solids, Phosphorus, Kjeldahl Nitrogen, Direct Charges
User Fees – Mill Waste:	Volume, Biochemical Oxygen Demand, Suspended Solids, Phosphorus, Kjeldahl Nitrogen Direct Charges from Procter & Gamble, and Fox River Fiber
Capital and Direct Revenue Mills:	Capital and Debt Service Charges.
Other Revenues:	Excess Capacity Rental and Exceedance Surcharges, Discounts Permit Fees, Leases and miscellaneous revenues.

Operating Expenses:

Salaries:	Departmental, Pretreatment, Interceptor, Meter and Lift Stations (East River Lift Stations and Old Plank Lift Stations).
Benefits:	Health, Dental, & Life Insurances, Retirement, Social Security, Fringe and Compensated Benefits, Workers and Unemployment Compensations, Uniforms, Employee Referral Services, Long Term Disability, and Wellness.
Employee Development:	Registration, Conference, Seminar, Tuition Fees and Training.
Travel and Meetings:	Lodging, Transportation, Meals, Mileage, and Meetings (prior were included in Employee Development and Supplementary Expenses).
Power:	All Power related.
Natural Gas & Fuel Oil:	Generators, Incineration and Heating.
Chemicals:	Sodium, Polymer, Ferric Chloride, Muriatic Acid, Lime, etc., Interceptor Odor Control and Lab Chemicals.
Maintenance Plant:	Repair and Maintenance Building and Equipments, Inventories (Obsolescence, Variances), Telephones for Lift and Meter Stations, Pretreatment Programs, Inventory Obsolescence, Leases and Rental.

NEW Water

Green Bay Metropolitan Sewerage District

Income Statement Legends per Categories

Operating Expenses (Continued):

Maintenance Interceptors:	Repair and Maintenance of Interceptors, Lift Stations, and Meter Stations.
Contracted Services:	Contractors, Legal, Audit, Studies, Occupational Health, Custodial Services, Environmental Programs, Sponsorship, Hazardous Waste Disposal, Class and Compensation, Household Hazardous Waste Disposal, DNR Environmental Fees, In District Sustainability, Risk Based Asset Management, Watershed Based Planning, Reg/Muni Environment Service and Contingency.
Insurances:	Automobile, Property, Boiler and Machinery, Liability, Umbrella, Commercial Crime, and Public Officials.
Solid Waste Disposal:	Hickory Meadows Landfill and Veolia Environmental Services.
Administrative & Information Technology:	Supplies, Postage, Data Processing (computer software, main application, support, etc.), Publishing, Sales and Use Tax, Bank Service Charges and Employee Recognition.
Supplementary Expenses:	Telephones (main lines, cells), Fuel Vehicles, (New) Fuel Equipment, Small Tools, Public Information, Memberships and Dues, Publications and Subscriptions, Licenses & Permits, Freight In, Freight Out, Safety Shoes and Glasses, and Water (including Fire Protection supplemental fee).

Non-Operating Revenues and Expenses:

Investment Income:	Interest on Investments and Interceptor Cost Recovery Interest.
Depreciation Expense:	Monthly Depreciation on all Fixed Assets such as Land, Land Improvements, Buildings, Vehicle, Boats & Trailers, Machinery Equipment, Furniture and Fixtures, Interceptors, Meters & Lift Stations.
Gain (Loss) on Disposal of Fixed Assets:	Sale, Disposal, and Transfer of Fixed Asset. Interest
Expense:	Debt Service and Bond Anticipation Note Interest.

NEW Water
GREEN BAY METROPOLITAN SEWERAGE DISTRICT
STATEMENTS OF NET POSITION
For the Twelve Months Ending:

31-Mar-26

Assets		
Current Assets		
Cash and Investments	\$	33,567,072.37
Receivables		
Sewage Treatment Service		7,121,944.09
Accrued Interest		479,793.05
Other		191,253.84
Inventories		3,223,498.64
Prepaid Expenses		557,903.28
Total Current Assets	\$	<u>45,141,465.27</u>
Restricted Assets		
Cash and Investments	\$	108,439,629.92
Accrued Interest Receivables		-
Interceptor Cost Recovery Receivable		845,449.43
Total Restricted Assets	\$	<u>109,285,079.35</u>
Deferred Outflows of Resources		
Deferred Pension Resources	\$	6,322,301.00
Deferred Life Insurance Resources	\$	812,023.00
Deferred Loss on Bond Advance Refunding	\$	1,867,189.57
Total Deferred outflows of Resources	\$	<u>9,001,513.57</u>
Capital Assets		
Wastewater Treatment Facilities	\$	378,857,254.25
Interceptor Sewers		112,200,966.16
Construction in Progress		57,984,034.63
Total Capital Assets	\$	<u>549,042,255.04</u>
Less: Accum Depreciation and Amortization		<u>(205,668,348.32)</u>
Net Capital Assets	\$	<u>343,373,906.72</u>
Other Assets		
Bond Issuance Costs	\$	-
Net Pension Asset	\$	-
Total Other Assets	\$	<u>-</u>
Total Assets	\$	<u>506,801,964.91</u>
Liabilities and Equity		
Current Liabilities		
Accounts Payable	\$	2,560,445.38
Salaries Payable		479,325.84
Other Accrued Liabilities		146,432.71
Total Current Liabilities	\$	<u>3,186,203.93</u>
Liabilities Payable from Restricted Assets		
Accounts Payable	\$	2,586,560.23
Current Maturities of General Long-Term Debt		12,643,907.00
Interest Accrued		1,874,226.72
Total Liabilities Payable from Restricted Assets	\$	<u>17,104,693.95</u>
Long-Term Liabilities		
General Long-Term Debt, Less Current Maturities	\$	192,399,729.94
Debt Premium	\$	658,809.84
Bond Premium	\$	-
Pension Liability		711,010.00
Compensated Absences	\$	2,717,904.09
Other post employment benefits (life insurance)	\$	1,949,040.00
Deferred Revenue		-
Total Long-Term Liabilities	\$	<u>198,436,493.87</u>
Total Liabilities	\$	<u>218,727,391.75</u>
Deferred Inflows of Resources		
Deferred Pension Obligations	\$	3,808,343.00
Deferred Life Insurance Obligations	\$	956,936.00
Total Deferred Inflows of Resources	\$	<u>4,765,279.00</u>
Net Position		
Net Position		
Invested in Capital Assets, net of Related Debt	\$	139,538,649.51
Restricted for Equipment & Interceptor Replacement		30,406,902.44
Restricted for Plant Capital Replacement		39,487,978.38
Restricted for Debt Retirement		38,181,264.40
Restricted for Capital Projects		-
Restricted for Pension		-
Unrestricted		35,694,499.43
Total Net Position	\$	<u>283,309,294.16</u>

Note: Please reference attached legends by categories.

NEW Water

Green Bay Metropolitan Sewerage District

Statements of Net Position (previously Balance Sheet) Legends per Categories

Assets

<u>Current Assets:</u>	Are cash and other assets that will be converted to cash or used by GBMSD in a relative short period of time, usually a year or less.
Cash and Investments:	Petty cash, cash in checking, general savings and investment accounts, discounts/premiums for unrestricted and restricted.
Accounts Receivables:	All amounts owed to GBMSD by customers.
Sewage Treatment Service:	Accounts receivable for sewage treatment services.
Accrued Interest:	Accrued interest and interest received on investments.
	Other: Accounts receivable from septage, pretreatment, and other customers such as Procter and Gamble Paper Products, West Shore Pipeline Co, etc.
Inventories:	Are goods and materials held available in stock by GBMSD such as electrical, instrumentation, mechanical, hardware, janitorial, lubes & oils, fuel oils, polymer, and all other miscellaneous related products such as copy paper, gloves, respirator or filter head piece, cartridge, cleaners, towels, etc.
Prepaid Expenses:	Insurances that have been paid for and not yet used such as worker compensation, liability base, automotive, umbrella base, property base, boiler & machinery, commercial crime, public officials, health, dental, and fringe benefits.
<u>Restricted Assets</u>	
Cash and Investments:	Savings, investment and money market accounts for debt, plant and equipment replacement fund (PERF), interceptor cost recovery (ICR), bond proceeds, and unrealized gain/loss.
Accrued Interest Receivable:	Accrued interest and interest received periodically on restricted investments.

NEW Water

Green Bay Metropolitan Sewerage District

Statements of Net Position (previously Balance Sheet) Legends per Categories

Interceptor Cost Recovery Receivable: Deferred receivable from municipal customers in which the municipalities have agreed to reimburse GBMSD for the cost of interceptors owned by GBMSD whose capacity has been allocated.

Capital/Fixed Assets:

Capital: Are all items of property other than inventories, receivables, copy rights, certain governmental obligations, and real and depreciable property used by GBMSD (Ex: capital stocks and bonds).

Fixed Assets: Are long term assets acquired by GBMSD rather than for resale.

Wastewater Treatment Facilities: Land & land improvements, structures, machinery & equipment, furniture & fixtures, vehicle, boats & trailers, and amortize assets.

Interceptor Sewers: Meter & lift stations and interceptors.

Construction in Progress (CIP): Asset entry records the cost of construction work, which is not yet completed. A CIP item is not depreciated until the asset is placed in service.

Accumulated Depreciation & Amortization: Shows the total of all depreciation and amortization recorded on the asset up through the balance sheet date (land & land improvements, structures, machinery & equipment, furniture & fixtures, vehicle, boats & trailers, and accumulated amortization).

Depreciation: Is the amount of plant asset cost allocated to each accounting period benefiting from the asset's use; it is a process of allocation, not valuation.

Amortization: Is the systematic write-off of the cost of an intangible asset to expense. A portion of intangible asset cost is allocated to each accounting period in the economic (useful) life of the asset.

NEW Water

Green Bay Metropolitan Sewerage District

Statements of Net Position (previously Balance Sheet) Legends per Categories

Other Assets:

Other Receivable: Miscellaneous receivable such as credits and adjustments received.

Bond Issuance Cost: Expenditures incurred in preparing and selling a bond issue such as legal, underwriting, registration fees, etc. These deferred charges are amortized over the period the bonds are outstanding (date of issue to the maturity date).

Liabilities and Equity

Current Liabilities: Are debts, usually due within one year, and the payment of which normally will require the use of current assets.

Accounts Payable: Are amounts owed by GBMSD to creditors for items or services purchased from them. Contains all vouchers that have been prepared and approved as proper liabilities such as accounts payable, retainage payable for projects and accounts payable accruals.

Salaries Payable: Accrued salaries incurred and not yet paid.

Other Accrued Liabilities: Amounts owed to employees for services rendered and for which payment has not been made at the balance sheet date such as fringe benefits payable, federal income tax payable, FICA payable, Medicare payable, life insurance, dependent care withholding, child support payment, United Way payable, and Wisconsin income tax payable.

Liabilities Payable for Restrictive Assets:

Accounts Payable: Contains all vouchers that have been prepared and approved as proper liabilities for restrictive assets.

Current Maturity of Long Term Debt:

Interest Accrued: Accrual and interest payment on debt services, Clean Water Fund loan, bond anticipation note, and Wisconsin environmental improvements.

NEW Water

Green Bay Metropolitan Sewerage District

Statements of Net Position (previously Balance Sheet) Legends per Categories

<u>Long-Term Liabilities:</u>	Are those debts not due for a relatively long period of time, usually more than one year.
General Long-Term Debt, Less Current Maturities:	Clean Water Fund loans, general obligation notes, bond issuance, bond anticipation notes, and promissory notes.
Compensated Absences:	Are compensation received by employees such as accrued vacation & sick pay, severance, and paid leave conversion. Accumulated unpaid vacation and sick paid amounts are accrued when benefits vested to employees.
Deferred Revenues:	Involves transfer of data already recorded in asset and liability accounts to expense and revenue accounts (Ex: De Pere consolidation).

Net Assets

Invested in Capital Assets, Net of Related Debt:	Capital Assets net of debt such as Clean Water Fund loans, general obligation note, bond issue, bond anticipation loan, promissory note, bond issuance costs, and discount on bond issue.
Restrictive for Equipment and Interceptor Replacement:	Plant and equipment replacement fund (PERF), interceptor cost recovery (ICR) investments, Rate Stabilization Fund and accrued interest received.
Restricted for Debt Retirement:	Restrictive debt investment, accrued interest received debt, and interest payable.
Restricted for Capital Projects:	Restrictive for capital project expenditures for the R2E2 Solids Project.
Unrestricted:	All other net assets that do not meet the definition of "restricted" or "invested in capital assets, net of related debt."

Memorandum

TO: Commission
Nate Qualls

FROM: Patrick Wescott

DATE: April 15, 2026

SUBJECT: March 2026 Operations Report

CC: Jake Becken – Treatment
Pat Smits – Maintenance
Kate Verbeten – Environmental Compliance

Effluent Quality

Both facilities were in full compliance with all effluent limits for the month of March.

Attached are graphs showing a rolling 12-month average for effluent quality and permit limits for both facilities.

Air Quality

The Green Bay Facility was in compliance with air quality limits for the month of March.

Resource Recovery

For the month, the solids processing facility generated 1,447 MWH of electricity. A total of 194,010 CCF of biogas was recovered, representing approximately 96% of the total volume produced. The remaining volume was sent through the waste gas flare. NEW Water received 1,048,267 gallons of high-strength waste.

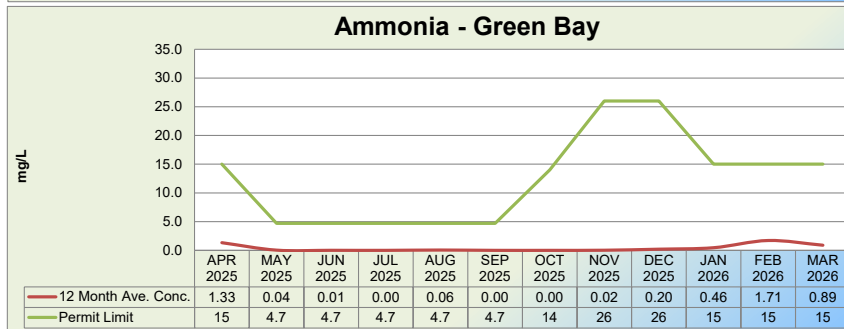
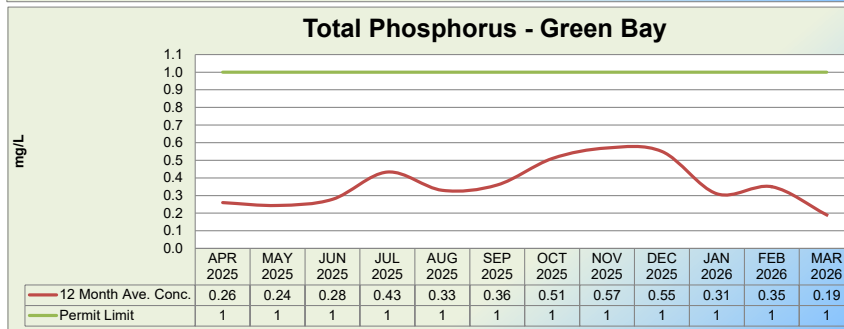
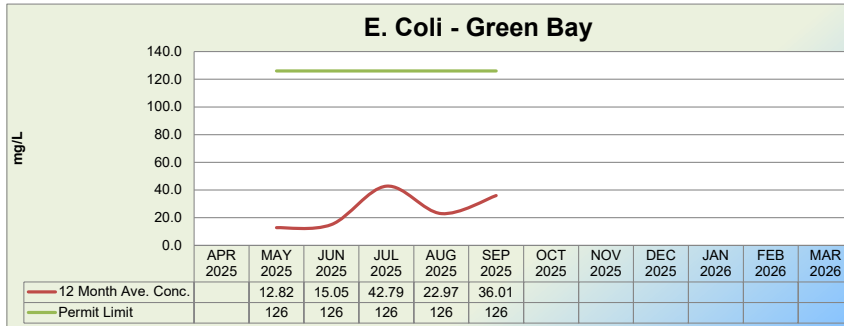
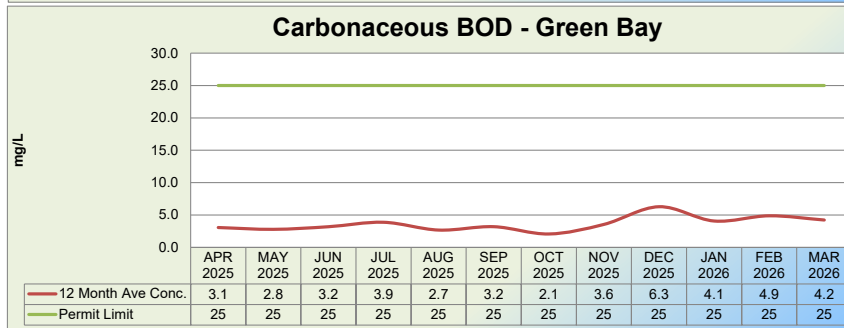
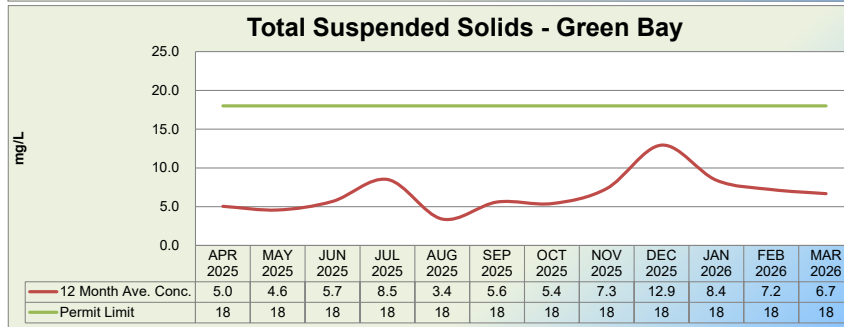
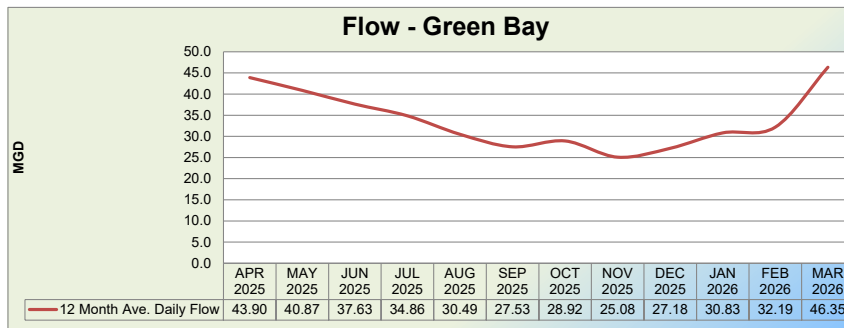
Attachments



EFFLUENT QUALITY - CURRENT YEAR 2026													May - October Avg = 0.6 mg/L			Ammonia Limits									
NEW Water (GBMSD) - GREEN BAY FACILITY													November - April Avg = 0.6 mg/L			Jan-Apr. Monthly Avg = 15 mg/L Weekly Avg = 59 mg/L May-Sept Monthly Avg = 4.7 mg/L Weekly Avg =13 mg/L October Monthly Avg =14 mg/L Weekly Avg = 38 mg/L Nov-Dec Monthly Avg. = 26 mg/L Weekly Avg =104 mg/L									
Permit Limits:		18 mg/L			N/A			25 mg/L			126#/ 100 ml			> 410#/100 ml 10%			1.0 mg/L 0.6 mg/L per Six Months								
MONTH	FLOW		TSS			T-BOD			C-BOD			E. Coli		T. PHOSPHORUS (LL)				AMMONIA			TKN				
	Million Gallons	MGD	Ave mg/L	Ave #/Day	Total #/Month	Ave mg/L	Ave #/Day	Total #/Month	Ave mg/L	Ave #/Day	Total #/Month	Monthly Geo Mean	% Exceedance	Ave mg/L	Ave #/Day	Ave mg/l 6 Months	Total #/Month	Ave mg/L	Ave #/Day	Total #/Month	Ave mg/L	Ave #/Day	Total #/Month		
JAN	955.695	30.83	8.4	2,161	66,996	11.3	2,924	90,642	4.1	1,050	32,541			0.31	79		2,434	0.46	140	4,340	2.35	619	19,198		
FEB	901.221	32.19	7.2	1,956	54,770	13.3	3,686	103,195	4.9	1,329	37,221			0.35	91		2,541	1.71	537	15,044	3.83	1,097	30,706		
MAR	1,436.822	46.35	6.7	2,605	80,764	10.7	4,232	131,193	4.2	1,664	51,573			0.19	70		2,176	0.89	378	11,733	2.72	1,079	33,452		
APR																0.39									
MAY																									
JUN																									
JUL																									
AUG																									
SEP																									
OCT																									
NOV																									
DEC																									
Average	1,097.913	36.46	7.4	2,241	67,510	11.8	3,614	108,343	4.4	1,348	40,445			0.28	80		2,384	1.02	352	10,372	2.97	932	27,785		
Total	3,293.739				202,530			325,030			121,335						7,151			31,117			83,356		
All time record best(s) ->			2.0	425	13,187	2.0	336	10,267	0.2	52	1,556			0.11	27		803	0.00	0	0	0.67	170	5,125		

The effluent quality was in compliance with all of the above permit parameters for March 2026

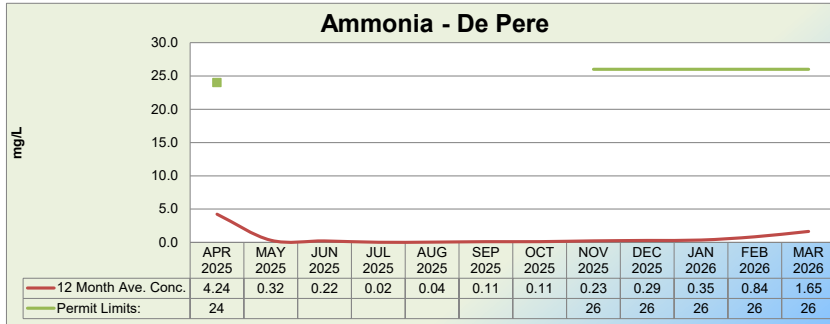
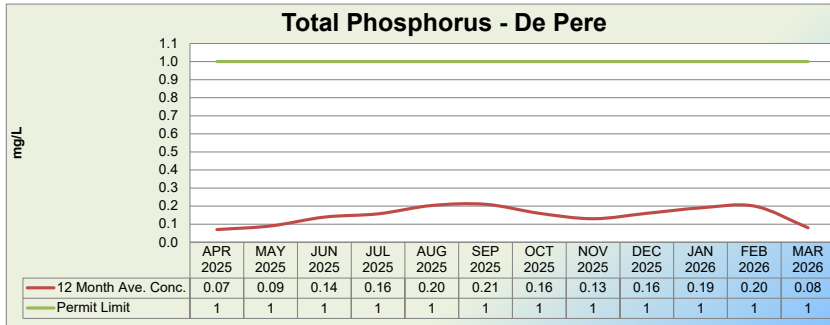
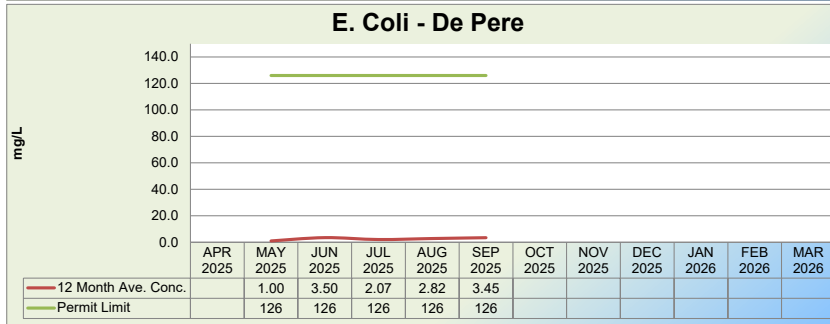
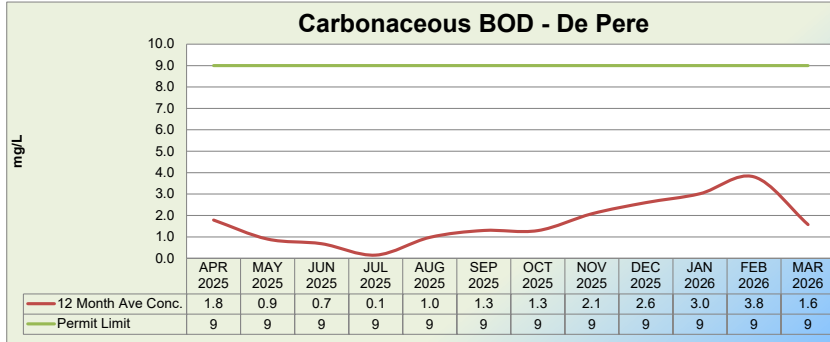
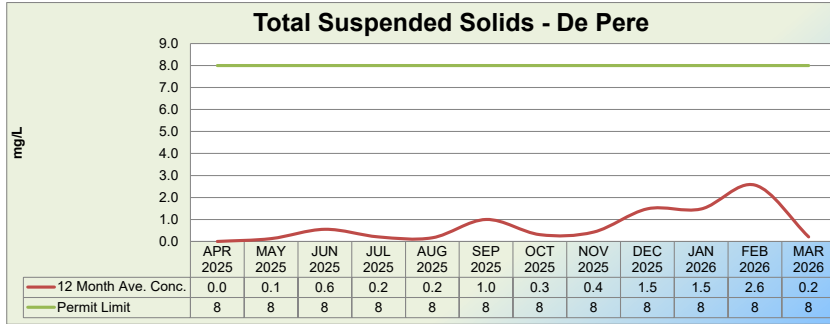
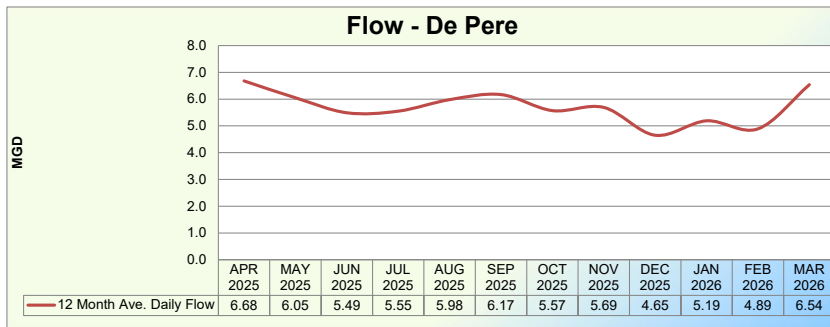
EFFLUENT QUALITY - CURRENT YEAR 2025													May - October Avg = 0.6 mg/L			Ammonia Limits									
NEW Water (GBMSD) - GREEN BAY FACILITY													November - April Avg = 0.6 mg/L			Jan-Apr. Monthly Avg = 15 mg/L Weekly Avg = 59 mg/L May-Sept Monthly Avg = 4.7 mg/L Weekly Avg =13 mg/L October Monthly Avg =14 mg/L Weekly Avg = 38 mg/L Nov-Dec Monthly Avg. = 26 mg/L Weekly Avg =104 mg/L									
Permit Limits:		18 mg/L			N/A			25 mg/L			126#/ 100 ml			> 410#/100 ml 10%			1.0 mg/L 0.6 mg/L per Six Months								
MONTH	FLOW		TSS			T-BOD			C-BOD			E. Coli		T. PHOSPHORUS (LL)				AMMONIA			TKN				
	Million Gallons	MGD	Ave mg/L	Ave #/Day	Total #/Month	Ave mg/L	Ave #/Day	Total #/Month	Ave mg/L	Ave #/Day	Total #/Month	Monthly Geo Mean	% Exceedance	Ave mg/L	Ave #/Day	Ave mg/l 6 Months	Total #/Month	Ave mg/L	Ave #/Day	Total #/Month	Ave mg/L	Ave #/Day	Total #/Month		
JAN	852.856	27.51	7.0	1,615	50,058	8.8	2,016	62,491	3.6	828	25,655			0.40	93		2,886	0.13	31	946	2.24	512	15,865		
FEB	762.613	27.24	7.0	1,587	44,433	9.1	2,089	58,479	4.1	920	25,757			0.39	87		2,449	0.12	35	987	2.41	549	15,384		
MAR	1,248.694	40.28	7.1	2,443	75,734	14.7	5,140	159,353	4.6	1,561	48,384			0.27	89		2,756	5.28	1,913	59,313	7.20	2,541	78,770		
APR	1,317.017	43.90	5.0	1,877	56,319	8.7	3,344	100,329	3.1	1,151	34,526			0.26	95	0.33	2,857	1.33	574	17,229	3.26	1,305	39,145		
MAY	1,267.107	40.87	4.6	1,600	49,588	5.6	1,945	60,288	2.8	992	29,765	12.82	0.00	0.24	82		2,533	0.04	16	452	1.56	531	16,448		
JUN	1,128.833	37.63	5.7	1,786	53,579	6.0	1,907	57,209	3.2	1,004	30,132	15.05	0.00	0.28	88		2,627	0.01	3	79	1.61	506	15,188		
JUL	1,080.737	34.86	8.5	2,489	77,149	7.2	2,113	65,493	3.9	1,207	35,015	42.79	0.00	0.43	128		3,956	0.00	0	0	2.10	608	18,853		
AUG	945.130	30.49	3.4	887	27,500	4.6	1,188	36,823	2.7	742	21,530	22.97	0.00	0.33	84		2,602	0.06	15	446	1.93	489	15,170		
SEP	825.967	27.53	5.6	1,282	38,467	5.5	1,274	38,207	3.2	734	22,032	36.01	0.00	0.36	82		2,460	0.00	0	0	2.09	479	14,375		
OCT	896.531	28.92	5.4	1,298	40,237	6.6	1,601	49,641	2.1	500	15,496			0.51	120	0.36	3,707	0.00	0	0	2.10	505	15,655		
NOV	752.402	25.08	7.3	1,536	46,072	8.6	1,803	54,087	3.6	742	22,247			0.57	119		3,575	0.02	4	134	2.28	476	14,289		
DEC	842.682	27.18	12.9	2,946	91,323	13.3	3,023	93,719	6.3	1,429	44,288			0.55	125		3,875	0.20	47	1,466	3.08	700	21,692		
Average	993.381	32.62	6.6	1,779	54,205	8.2	2,287	69,677	3.6	984	29,569			0.38	99		3,024	0.60	220	6,754	2.65	767	23,403		
Total	11,920.570				650,460			836,120			354,828						36,284			81,053			280,834		
All time record best(s) ->			2.0	425	13,187	2.0	336	10,267	0.2	52	1,556			0.11	27		803	0.00	0	0	0.67	170	5,125		



EFFLUENT QUALITY - CURRENT YEAR 2026 NEW WATER (GBMSD) - DE PERE FACILITY													May - October Avg. = 0.6 mg/L				Ammonia Limits																														
													November - April Avg. = 0.6 mg/L				Jan-Mar. Monthly Avg = 26 mg/L Daily Max = 26 mg/L																														
Permit Limits:													8.0 mg/L				N/A				9.0 mg/L				126# / > 410#/100 ml				1.0 mg/L				0.6 mg/L per Six Months					May-Oct Monitor only					Nov-Dec. Monthly Avg. = 26 mg/L Daily Max = 26 mg/L				
	FLOW		TSS			T-BOD			C-BOD			E. Coli		T. PHOSPHORUS (LL)				AMMONIA			TKN																										
MONTH	Million Gallons	MGD	Ave mg/L	Ave #/Day	Total #/Month	Ave mg/L	Ave #/Day	Total #/Month	Ave mg/L	Ave #/Day	Total #/Month	Monthly Geo Mean	% Exceedance	Ave mg/L	Ave #/Day	Ave mg/l 6 Months	Total #/Month	Ave mg/L	Ave #/Day	Total #/Month	Ave mg/L	Ave #/Day	Total #/Month																								
JAN	160.943	5.19	1.5	66	2,053	3.9	172	5,322	3.0	132	4,079			0.19	8		258	0.35	15	466	2.61	113	3,492																								
FEB	137.030	4.89	2.6	105	2,945	6.1	246	6,883	3.8	153	4,291			0.20	8		230	0.84	35	972	3.12	127	3,550																								
MAR	202.629	6.54	0.2	11	355	4.8	264	8,194	1.6	95	2,950			0.08	4		137	1.65	90	2,799	3.15	171	5,311																								
APR																0.15																															
MAY																																															
JUN																																															
JUL																																															
AUG																																															
SEP																																															
OCT																																															
NOV																																															
DEC																																															
Average	166.867	5.54	1.4	61	1,784	4.9	227	6,800	2.8	127	3,773			0.16	7		208	0.95	47	1,412	2.96	137	4,118																								
Total	500.601				5,352			20,399			11,319						625			4,237			12,354																								
All time record best(s) ->			0.0	0	0	0.0	0	0	0.0	0	0			0.05	2		75	0.00	0	0	0.85	50	1,495																								

The effluent quality was in compliance with all of the above permit parameters for March 2026

EFFLUENT QUALITY - CURRENT YEAR 2025 NEW WATER (GBMSD) - DE PERE FACILITY													May - October Avg. = 0.6 mg/L				Ammonia Limits																														
													November - April Avg. = 0.6 mg/L				Jan-Mar. Monthly Avg = 26 mg/L Daily Max = 26 mg/L																														
Permit Limits:													8.0 mg/L				N/A				9.0 mg/L				126# / > 410#/100 ml				1.0 mg/L				0.6 mg/L per Six Months					May-Oct Monitor only					Nov-Dec. Monthly Avg. = 26 mg/L Daily Max = 26 mg/L				
	FLOW		TSS			T-BOD			C-BOD			E. Coli		T. PHOSPHORUS (LL)				AMMONIA			TKN																										
MONTH	Million Gallons	MGD	Ave mg/L	Ave #/Day	Total #/Month	Ave mg/L	Ave #/Day	Total #/Month	Ave mg/L	Ave #/Day	Total #/Month	Monthly Geo Mean	% Exceedance	Ave mg/L	Ave #/Day	Ave mg/l 6 Months	Total #/Month	Ave mg/L	Ave #/Day	Total #/Month	Ave mg/L	Ave #/Day	Total #/Month																								
JAN	140.008	4.52	0.9	37	1,116	2.8	106	3,285	2.4	90	2,797			0.14	5		162	0.23	8	251	1.88	70	2,173																								
FEB	127.960	4.57	0.2	6	164	3.4	131	3,669	2.4	91	2,556			0.08	3		87	1.26	53	1,480	3.01	119	3,334																								
MAR	209.073	6.74	0.6	40	1,248	5.2	303	9,390	2.9	168	5,196			0.07	4		119	3.52	219	6,781	5.02	301	9,322																								
APR	200.464	6.68	0.0	0	0	5.0	276	8,275	1.8	103	3,090			0.07	4	0.11	111	4.24	237	7,123	5.44	304	9,105																								
MAY	187.535	6.05	0.1	6	193	2.3	119	3,698	0.9	47	1,469	1.00	0.00	0.09	5		143	0.32	18	568	1.80	92	2,845																								
JUN	164.744	5.49	0.6	25	745	2.6	119	3,573	0.7	30	908	3.50	0.00	0.14	6		190	0.22	10	297	1.73	79	2,360																								
JUL	171.948	5.55	0.2	9	277	0.9	44	1,312	0.1	7	221	2.07	0.00	0.16	7		226	0.02	1	26	1.56	72	2,230																								
AUG	185.432	5.98	0.2	8	246	1.9	99	3,068	1.0	53	1,642	2.82	0.00	0.20	10		311	0.04	2	61	1.99	101	3,117																								
SEP	185.139	6.17	1.0	46	1,388	2.4	124	3,732	1.3	65	1,948	3.45	3.33	0.21	11		323	0.11	5	157	1.79	90	2,708																								
OCT	172.702	5.57	0.3	11	330	2.8	127	3,941	1.3	59	1,817			0.16	7	0.16	226	0.11	5	165	1.72	80	2,471																								
NOV	170.840	5.69	0.4	21	642	3.5	164	4,917	2.1	98	2,940			0.13	6		185	0.23	11	325	1.84	86	2,593																								
DEC	144.287	4.65	1.5	60	1,807	3.9	154	4,762	2.6	102	3,164			0.16	6		189	0.29	11	353	2.31	90	2,796																								
Average	171.678	5.64	0.5	22	680	3.1	147	4,468	1.6	76	2,312			0.13	6		189	0.88	48	1,466	2.51	124	3,755																								
Total	2,060.132				8,156			53,622			27,749						2,273			17,587			45,055																								
All time record best(s) ->			0.0	0	0	0.0	0	0	0.0	0	0			0.05	2		75	0.00	0	0	0.85	50	1,495																								



**R2E2 ENERGY REPORT GREEN BAY 2026
NEW Water (GBMSD) - GREEN BAY FACILITY**

	Bio-gas Generated					Electricity Used					Natural Gas Used								
	Generators			Flare		Purchased		Generated			Incineration			Heating Boiler		Thermal Oil Boiler		Co-Generation Units	
	Total (CCF)	Total (CCF)	% of Total	Total (CCF)	% of Total	Total (MWH)	Total (MWH)	% of Total	Total (MWH)	% of Total	Total (CCF)	Total (CCF)	% of Total	Total (CCF)	% of Total	Total (CCF)	% of Total	Total (CCF)	% of Total
January	229,734	211,750	92.2	17,984	7.8	3,445	1,994	57.9	1,451	42.1	179,163	22,800	12.7	150,232	83.9	0	0.0	6,131	3.4
February	217,630	199,058	91.5	18,572	8.5	3,147	1,829	58.1	1,318	41.9	135,915	21,090	15.5	110,033	81.0	2,431	1.8	2,361	1.7
March	201,887	194,010	96.1	7,877	3.9	3,530	2,083	59.0	1,447	41.0	128,283	24,440	19.1	100,981	78.7	2	0.0	2,860	2.2
April																			
May																			
June																			
July																			
August																			
September																			
October																			
November																			
December																			

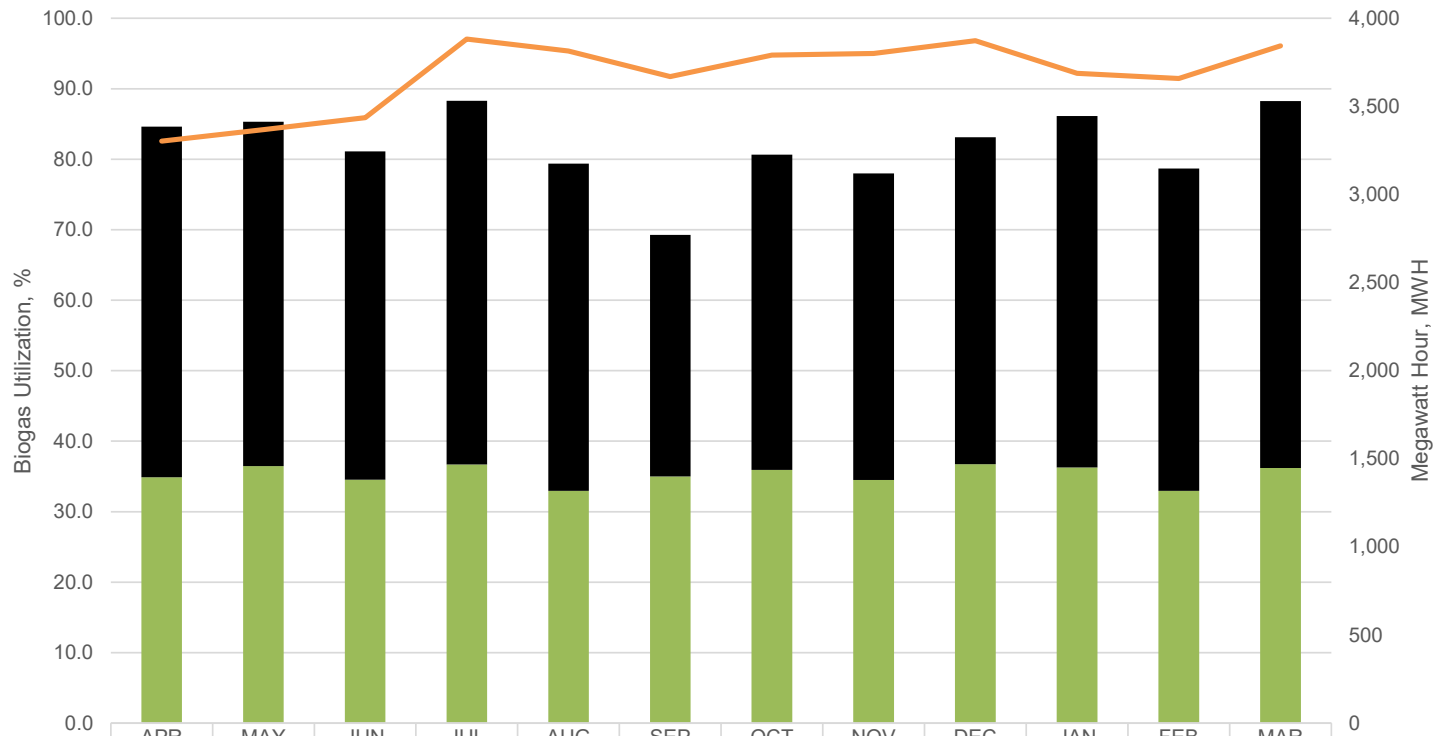
	Co-Generation Unit #3 (P-21)						Co-Generation Unit #4 (P-22)						High Strength Waste Received				
	Monthly Run Time (hours)	Total Energy Generated (MWH)	Gas Consumption			Natural Gas			Monthly Run Time (hours)	Total Energy Generated (MWH)	Gas Consumption			Natural Gas			
			Total (CCF)	Total (CCF)	% of Total	Total (CCF)	% of Total	Total (CCF)			% of Total	Total (CCF)		% of Total	Total (CCF)	% of Total	
																	Total (gals)
January	250	483	68,343	67,761	99.1	582	0.9	501	968	149,537	143,988	96.3	5,549	3.7	1,023,802		
February	136	264	46,168	45,583	98.7	585	1.3	541	1,054	155,251	153,475	98.9	1,776	1.1	907,767		
March	743	1,447	196,870	194,010	98.5	2,860	1.5	0	0	0	0	0.0	0	0.0	1,048,267		
April																	
May																	
June																	
July																	
August																	
September																	
October																	
November																	
December																	

**R2E2 ENERGY REPORT GREEN BAY 2025
NEW Water (GBMSD) - GREEN BAY FACILITY**

	Bio-gas Generated					Electricity Used					Natural Gas Used								
	Generators			Flare		Purchased		Generated			Incineration			Heating Boiler		Thermal Oil Boiler		Co-Generation Units	
	Total (CCF)	Total (CCF)	% of Total	Total (CCF)	% of Total	Total (MWH)	Total (MWH)	% of Total	Total (MWH)	% of Total	Total (CCF)	Total (CCF)	% of Total	Total (CCF)	% of Total	Total (CCF)	% of Total	Total (CCF)	% of Total
January	205,576	189,076	92.0	16,500	8.0	3,296	1,930	58.6	1,366	41.4	147,129	21,310	14.5	121,109	82.3	5	0.0	4,706	3.2
February	182,942	167,591	91.6	15,351	8.4	2,995	1,722	57.5	1,273	42.5	145,404	21,040	14.5	116,252	80.0	1,437	1.0	6,675	4.6
March	231,411	200,729	86.7	30,682	13.3	3,347	1,899	56.7	1,448	43.3	118,456	19,640	16.6	90,924	76.8	0	0.0	7,892	6.7
April	226,189	186,757	82.6	39,432	17.4	3,384	1,990	58.8	1,395	41.2	89,731	22,540	25.1	60,801	67.8	0	0.0	6,391	7.1
May	243,120	204,657	84.2	38,463	15.8	3,413	1,955	57.3	1,459	42.7	60,535	25,162	41.6	31,748	52.4	0	0.0	3,625	6.0
June	217,297	186,674	85.9	30,623	14.1	3,245	1,864	57.4	1,381	42.6	33,680	23,608	70.1	977	2.9	246	0.7	8,849	26.3
July	176,545	171,329	97.0	5,216	3.0	3,532	2,063	58.4	1,469	41.6	48,730	23,425	48.1	0	0.0	0	0.0	25,305	51.9
August	177,498	169,239	95.3	8,259	4.7	3,176	1,858	58.5	1,318	41.5	47,792	17,782	37.2	0	0.0	180	0.4	29,830	62.4
September	192,466	176,511	91.7	15,955	8.3	2,771	1,371	49.5	1,400	50.5	27,922	8,485	30.4	0	0.0	76	0.3	19,361	69.3
October	219,393	207,934	94.8	11,459	5.2	3,226	1,789	55.4	1,437	44.6	73,287	27,798	37.9	35,571	48.5	0	0.0	9,918	13.5
November	223,302	212,132	95.0	11,170	5.0	3,119	1,739	55.8	1,380	44.2	110,350	25,090	22.7	78,561	71.2	0	0.0	6,699	6.1
December	214,701	207,889	96.8	6,813	3.2	3,324	1,854	55.8	1,470	44.2	173,574	27,590	15.9	131,518	75.8	50	0.0	14,416	8.3

	Co-Generation Unit #3 (P-21)						Co-Generation Unit #4 (P-22)						High Strength Waste Received	Struvite Harvested				
	Monthly Run Time (hours)	Total Energy Generated (MWH)	Gas Consumption			Natural Gas			Monthly Run Time (hours)	Total Energy Generated (MWH)	Gas Consumption				Natural Gas			
			Total (CCF)	Total (CCF)	% of Total	Total (CCF)	% of Total	Total (CCF)			% of Total	Total (CCF)			% of Total	Total (CCF)	% of Total	
																		Total (gals)
January	582	1,107	159,319	155,523	97.6	3,796	2.4	136	259	34,462	33,553	97.4	909	2.6	811,838	0		
February	324	630	87,848	82,369	93.8	5,479	6.2	340	644	86,419	85,222	98.6	1,197	1.4	731,616	0		
March	734	1,429	206,127	198,499	96.3	7,629	3.7	10	19	2,493	2,230	89.5	263	10.5	976,123	0		
April	284	551	76,035	71,913	94.6	4,122	5.4	433	843	117,113	114,844	98.1	2,269	1.9	1,143,339	0		
May	178	345	47,998	46,742	97.4	1,256	2.6	571	1,113	160,284	157,915	98.5	2,369	1.5	1,111,240	0		
June	292	573	77,317	73,007	94.4	4,310	5.6	416	808	118,206	113,667	96.2	4,539	3.8	689,151	0		
July	246	476	63,215	53,637	84.8	9,578	15.2	510	993	133,419	117,692	88.2	15,727	11.8	637,354	0		
August	688	134	182,121	153,642	84.4	28,479	15.6	61	1,184	16,948	15,597	92.0	1,351	8.0	629,323	0		
September	717	1,396	195,287	176,068	90.2	19,218	9.8	2	4	586	443	75.6	143	24.4	656,955	0		
October	8	2	2,282	1,842	80.7	440	19.3	737	1,436	215,570	206,092	95.6	9,478	4.4	800,211	0		
November	0	0	0	0	0	0	0	712	1,380	218,831	212,132	96.9	6,699	3.1	684,813	0		
December	37	66	9,101	7,333	80.6	1,768	19.4	721	1,404	213,203	200,556	94.1	12,647	5.9	860,715	0		

GBF Energy Utilization - R2E2



Purchased Electricity, MWH	1,990	1,955	1,864	2,063	1,858	1,371	1,789	1,739	1,854	1,994	1,829	2,083
Generated Electricity, MWH	1,395	1,459	1,381	1,469	1,318	1,400	1,437	1,380	1,470	1,451	1,318	1,447
Biogas Utilized, %	82.6	84.2	85.9	97.0	95.3	91.7	94.8	95.0	96.8	92.2	91.5	96.1

Memorandum

TO: Commissioners

FROM: Nate Qualls

DATE: April 22, 2026

SUBJECT: April Commission Meeting – Executive Director’s Report

- a) **April Commission Meeting.** The April Commission meeting will be held on Wednesday, April 22, 2026, beginning at 8:30 a.m. This meeting will be hybrid, held in person in the Solids Building 310 Conference room and via Zoom videoconference.
- b) **Wet Weather & Public Service Announcement.** With an eye on impending wet weather, NEW Water reached out to community partners to ask for help in spreading the message about being “Sump Pump Savvy” (see linked PSA). Municipal partners, media, and residents shared this, with a social media reach of about 14,000. This outreach is part of NEW Water’s ongoing efforts to enhance public awareness of wet weather impacts to the sanitary sewer system, as part of the Inflow & Infiltration Regional Reduction Program, which you can learn more about here: www.newwater.us/projects/inflow-infiltration.
- c) **Community Outreach Highlights: NEWMA, STEM Family Day, and Leadership Green Bay.** As part of ongoing efforts to enhance understanding and build trust with area residents, leaders, and partners about NEW Water costs, needs, and critical services, recent community outreach activities include:
 - a. **Northeast Wisconsin Manufacturing Alliance (NEWMA).** On April 21, NEW Water will present to this group’s membership, which is “a group of manufacturers, educators, workforce development, chambers of commerce, and state organizations that promote manufacturing in the Northeast Wisconsin region.” NEW Water is now a member of NEWMA as well, which represents many area industries and businesses within our service area. NEW Water has been engaging with NEWMA for many years, including on the topic of PFAS, as part of NEW Water’s efforts to develop and leverage partnerships on more cost-effective, pollution prevention efforts.
 - b. **Greater Green Bay Chamber of Commerce’s Leadership Green Bay.** This community Program connects area professionals “to explore the key issues shaping our community and quality of life.” NEW Water presented to the Program’s current class on April 14, as part of Environment Day.
 - c. **STEM Family Day at the STEM Innovation Center.** NEW Water engaged with area families, partners, and businesses at this well-attended, free-of-



charge event at the STEM Innovation Center located on the University of Wisconsin – Green Bay’s campus, with an educational booth and community engagement.